

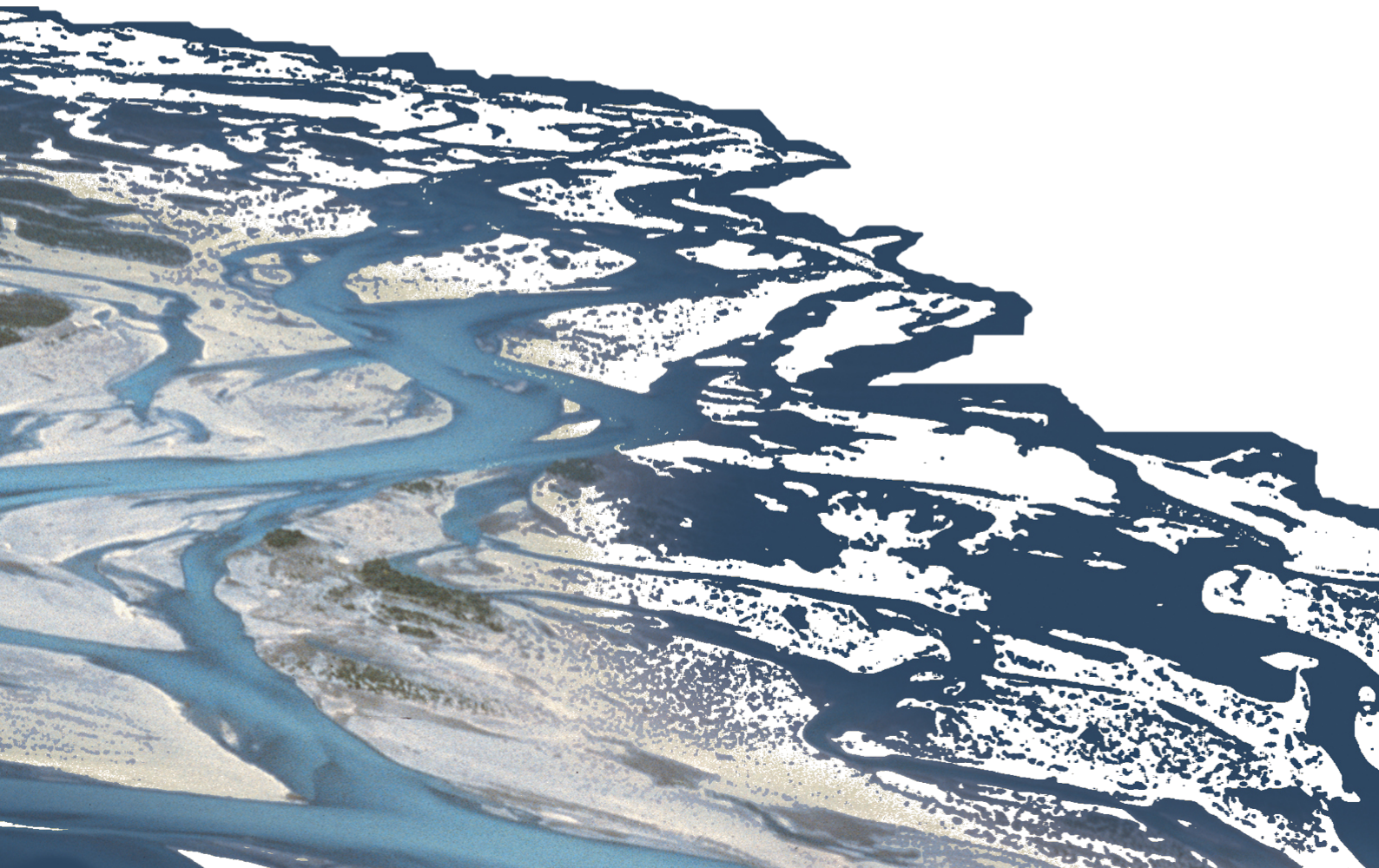


BASEMENT

**BASIC SIMULATION ENVIRONMENT
FOR SIMULATION OF ENVIRONMENTAL FLOW
AND NATURAL HAZARD SIMULATION**

SYSTEM MANUALS

**VERSION 3.2
May 2022**



Preamble

VERSION 3.2.0

May 2022

Credits

Current Team Members

Software Development, Documentation and Test (alphabetical)

M. Bürgler, MSc. ETH Environmental Eng.

F. Caponi, MSc. Environmental Eng.

Dr. D. Conde, MSc. Civil Eng.

S. Kammerer, MSc. ETH Environmental Eng.

Dr.techn. M. Weberndorfer, MSc.

Scientific Board

Prof. Dr. R. Boes, Director VAW, Member of Project Board

Dr. A. Siviglia, MSc, Scientific Advisor

Dr. D. Vanzo, MSc. Environmental Eng., Scientific Advisor

Dr. D. Vetsch, Dipl. Ing. ETH, Project Director

Former Project Members

See <https://www.basement.ethz.ch/people>

Commissioned and co-financed by

Swiss Federal Office for the Environment (FOEN)

Contact

Website: <https://www.basement.ethz.ch>

User forum: <https://people.ee.ethz.ch/~basement/forum>

© 2022 ETH Zurich / Laboratory of Hydraulics, Glaciology and Hydrology (VAW)

For list of contributors see <https://www.basement.ethz.ch>



Laboratory of Hydraulics,
Hydrology and Glaciology



Eidgenössische Technische Hochschule Zürich
Swiss Federal Institute of Technology Zurich

Citation Advice

For System Manuals:

Vetsch D., Siviglia A., Bacigaluppi P., Bürgler M., Caponi F., Conde D., Gerke E., Kammerer S., Koch A., Peter S., Vanzo D., Vonwiller L., Weberndorfer M. 2022. System Manuals of BASEMENT, Version 3.2.0. Laboratory of Hydraulics, Glaciology and Hydrology (VAW). ETH Zurich. Available from <https://www.basement.ethz.ch>. [date of access].

For Website:

BASEMENT – Basic Simulation Environment for Computation of Environmental Flow and Natural Hazard Simulation, 2022. <https://www.basement.ethz.ch>

For Software:

BASEMENT – Basic Simulation Environment for Computation of Environmental Flow and Natural Hazard Simulation. Version 3.2.0 © ETH Zurich, VAW, 2022.

License

End-User License Agreement (EULA)

THIS EULA IS INTENDED FOR COMMERCIAL AND NON-COMMERCIAL PURPOSES. FOR QUESTIONS RELATED TO THIS AGREEMENT PLEASE CONTACT: Dr. David Vetsch, basement@ethz.ch

This End-User License Agreement (“EULA”) is a legal agreement between you (“You”) (an individual or acting on behalf of a company) and ETH Zurich, Raemistrasse 101, 8092 Zurich (Switzerland) (“ETH Zurich”) for the binary software code of **BASEMENT** and associated media, and may include “online” or electronic documentation (“SOFTWARE”).

The SOFTWARE simulates water flow, sediment and scalar transport in rivers and according interaction in consideration of movable boundaries and morphological changes. Further information and description of the SOFTWARE is available here: <https://basement.ethz.ch/>

The SOFTWARE is protected by copyright laws. The SOFTWARE is hereby licensed, not sold.

In order to install and use the SOFTWARE, You must indicate agreement with the following terms and conditions by clicking “ACCEPT” at the end of this EULA during the installation process.

1 LICENSE GRANT

- (i) ETH Zurich hereby grants to You, and in case You are acting on behalf of a company also to the employees of such company, a free-of-charge, single, non-exclusive, world-wide, non-transferable, non-sublicensable right to install, execute and display the SOFTWARE on device(s) running a validly licensed copy of the operating system for which the SOFTWARE was designed. Such rights are granted for commercial and non-commercial purposes.
- (ii) With respect to electronic documents included with the SOFTWARE, You may make an unlimited number of copies (either in hardcopy or electronic form), provided that such copies shall be used only for internal purposes and are not republished or distributed to any third party.

2 USE OF RESULTS GENERATED BY THE SOFTWARE

You are allowed to use the content generated by the SOFTWARE (“SOFTWARE RESULTS”) for commercial and non-commercial purposes.

Note that any attribution (e.g. ETH Zurich logo) on the SOFTWARE RESULTS must be retained. You are not allowed to alter, cancel or fade, after a few seconds, such attribution.

3 THIRD PARTY CODE

The SOFTWARE may contain other program code from third parties. A list of other third party code and libraries used by this SOFTWARE is available here: <https://basement.ethz.ch/about/thirdpartysoftware>

Their license applies to such third party code and libraries contained herein. Refer to the above internet site for the licenses and copyrights.

4 DURATION OF LICENSE AND TERMINATION

This EULA enters into effect on the date of acceptance of this EULA by You. This EULA,

- (i) may be terminated by ETH Zurich at any time for any reason;
- (ii) will terminate automatically without notice from ETH Zurich if (a) You fail to comply with any term(s) of this EULA or (b) You refuse, after the notification in accordance with clause 10 (i), to accept the new EULA term and conditions provided by ETH Zurich;
- (iii) is terminated as soon as You cease to use the SOFTWARE and destroy all copies, full or partial, of the SOFTWARE;

Upon termination pursuant to (i) and (ii), you must cease all use of the SOFTWARE and destroy all copies, full or partial, of the SOFTWARE.

5 OBLIGATIONS OF YOU

- (i) You may not remove or alter any copyright notices on any and all copies of the SOFTWARE.
- (ii) You may not distribute or assign the SOFTWARE or any copy thereof to third parties. You may not rent, lease, sell, lend, transfer, redistribute, or sublicense the SOFTWARE to any third party.
- (iii) You may not reverse engineer, decompile or disassemble the SOFTWARE, except and only to the extent that such activity is expressly permitted by applicable law despite this limitation.
- (iv) You may not reproduce, modify or adapt the SOFTWARE, except and only to the extent that such activity is expressly permitted by applicable law despite this limitation.
- (v) You must comply with all applicable laws.

6 OWNERSHIP

Except as expressly licensed to You in this EULA, ETH Zurich and its licensors retains all right, title, and interest in and to the SOFTWARE. All title and copyrights in and to the SOFTWARE (including but not limited to any images, photographs, animations, video, audio, music, text, and “applets” incorporated into the SOFTWARE), the accompanying materials, and any copies of the SOFTWARE are owned by ETH Zurich and its licensors. The SOFTWARE is protected by copyright laws. Therefore, You must treat the SOFTWARE like any other copyrighted material. All rights not expressly granted are reserved by ETH Zurich.

7 MAINTENANCE, SUPPORT, UPGRADES OR NEW RELEASES

ETH Zurich has no obligation to provide maintenance, support, upgrades, new releases, enhancements or modifications and disclaims all costs associated with service, repair or correction of the SOFTWARE. If any supplemental software code is provided to You by ETH Zurich, this supplemental software code shall be considered part of the SOFTWARE and is subject to the terms and conditions of this EULA if not otherwise explicitly written. It is expressly acknowledged by You that no rights to receive maintenance, support, upgrades, new releases, enhancements or modifications may be derived from this EULA.

8 NO WARRANTY

YOU EXPRESSLY ACKNOWLEDGE AND AGREE THAT USE OF THE SOFTWARE IS AT YOUR SOLE RISK AND THAT THE ENTIRE RISK AS TO SATISFACTORY QUALITY, PERFORMANCE, ACCURACY, AND EFFORT IS WITH YOU. TO THE MAXIMUM EXTENT PERMITTED BY APPLICABLE LAW, THE SOFTWARE AND ANY SERVICES PERFORMED OR PROVIDED BY THE SOFTWARE ARE PROVIDED “AS IS” AND “AS AVAILABLE”, WITH ALL FAULTS AND WITHOUT WARRANTY OF ANY KIND, AND ETH ZURICH HEREBY DISCLAIMS ALL WARRANTIES AND CONDITIONS WITH RESPECT TO THE SOFTWARE AND ANY SERVICES, EITHER EXPRESS, IMPLIED, OR STATUTORY, INCLUDING, BUT NOT LIMITED TO, THE IMPLIED WARRANTIES AND/OR CONDITIONS OF MERCHANTABILITY, OF SATISFACTORY QUALITY, OF FITNESS FOR A PARTICULAR PURPOSE, OF ACCURACY, OF QUIET ENJOYMENT, AND OF NON-INFRINGEMENT OF THIRD-PARTY RIGHTS. ETH ZURICH DOES NOT WARRANT AGAINST INTERFERENCE WITH YOUR ENJOYMENT OF THE SOFTWARE, THAT THE FUNCTIONS CONTAINED IN OR SERVICES PERFORMED OR PROVIDED BY THE SOFTWARE WILL MEET YOUR REQUIREMENTS, THAT THE OPERATION OF THE SOFTWARE OR SERVICES WILL BE UNINTERRUPTED OR ERROR-FREE, OR THAT DEFECTS IN THE SOFTWARE OR SERVICES WILL BE CORRECTED. NO ORAL OR WRITTEN INFORMATION OR ADVICE GIVEN BY ETH ZURICH OR ITS AUTHORIZED REPRESENTATIVE SHALL CREATE A WARRANTY. SHOULD THE SOFTWARE OR SERVICES PROVE DEFECTIVE, YOU ASSUME THE ENTIRE COST OF ALL NECESSARY SERVICING, REPAIR, OR CORRECTION. SOME JURISDICTIONS DO NOT ALLOW THE EXCLUSION OF IMPLIED WARRANTIES OR LIMITATIONS ON APPLICABLE STATUTORY RIGHTS OF A CONSUMER, SO THE ABOVE EXCLUSION AND LIMITATIONS MAY NOT APPLY TO YOU.

9 LIABILITY

In no event shall ETH Zurich be liable for any damages (including, without limitation, lost profits, business interruption, or lost information) arising from the use of or inability

to use the SOFTWARE through You or the employees of the company You are legally representing. In no event will ETH Zurich be liable for loss of data or for indirect, special, incidental, consequential (including loss of profit), or other damages based in contract, tort or otherwise.

The above limitation of liability shall not be construed to amend or limit any party's statutory liability.

10 GENERAL PROVISIONS

- (i) ETH Zurich reserves the right to change the terms and conditions of this EULA at any point in time. In such event, ETH Zurich will notify You in due time of the changes to the terms of the EULA.
- (ii) Rights and duties derived from this EULA shall not be transferred to third parties without the written acceptance of the ETH Zurich.
- (iii) You shall not infer from this EULA any other rights, including licenses, than those that are explicitly stated herein.
- (iv) This EULA shall exclusively be governed by and interpreted in accordance with the laws of Switzerland, without reference to its conflict of laws principles. The exclusive place of jurisdiction is Zurich (Switzerland).

11 ACKNOWLEDGMENT

You acknowledge that you have read this EULA, understand it, and had an opportunity to seek independent legal advice prior to agreeing to it. In consideration of ETH Zurich agreeing to provide the SOFTWARE, You agree to be bound by the terms and conditions of this EULA. You further agree that it is the complete and exclusive statement of the agreement between you and ETH Zurich, which supersedes any proposal or prior agreement, oral or written, and any other communication between you and ETH Zurich relating to the subject of this EULA.

Notice:

Third party software copyright notices and third party software licenses can be found in the appendix.

**BASIC SIMULATION ENVIRONMENT
FOR SIMULATION OF ENVIRONMENTAL FLOW
AND NATURAL HAZARD SIMULATION**

TUTORIALS & TEST CASES

**VERSION 3.2
May 2022**



BASEMENT

Contents

1	Tutorials	3
1.1	Hydrodynamics and sediment transport at the river Flaz	3
1.1.1	Introduction	3
1.1.2	Computational Mesh	3
1.1.3	Hydraulics	3
1.1.3.1	Setup the Configuration File model.json	4
1.1.3.2	Setup the Configuration File simulation.json	7
1.1.3.3	Set up the Configuration File results.json	7
1.1.3.4	Steady Flow Simulation	7
1.1.3.5	Model Calibration	7
1.1.3.6	Unsteady Flow Simulation	8
1.1.4	Morphology	10
1.1.4.1	Setup the Configuration File model.json	10
1.1.4.2	Setup the Configuration File simulation.json	13
1.1.4.3	Results	14
1.1.5	Passive tracers	14
1.1.5.1	Setup the Configuration File model.json	14
1.1.5.2	Setup the Configuration File simulation.json	16
1.1.5.3	Set up the Configuration File results.json	17
1.2	Vegetation dynamics and bedload transport	17
1.2.1	Introduction	17
1.2.2	Computational Mesh	18
1.2.3	Morphology with Vegetation	18
1.2.3.1	Setup the Configuration File model.json	18
1.2.3.2	Setup the Configuration File simulation.json	20
1.2.3.3	Set up the Configuration File results.json	21
1.2.3.4	Results	22
1.3	Post-Processing	22
1.3.1	ParaView	22
1.3.2	Extract Data from Result File	22
2	Test cases	25
2.1	Introduction and Backends	25
2.1.1	Introduction	25
2.1.2	Backends	25
2.2	Circular dam break	26
2.2.1	Description	26
2.2.2	Geometry and Initial Conditions	26

2.2.3	Results	27
2.2.4	Performance	30
2.2.4.1	Ubuntu	30
2.2.4.2	Windows	33
2.3	Conical Dune	35
2.3.1	Description	35
2.3.2	Geometry and Initial Conditions	35
2.3.3	Results	36
2.4	Dam-break flow in a L-shaped channel with a mobile-bed	39
2.4.1	Description	39
2.4.2	Geometry and initial conditions	39
2.4.3	Results	39
2.4.4	Performance	41
2.4.4.1	Ubuntu	41
2.4.4.2	Windows	43
3	References	45

Tutorials

1.1 Hydrodynamics and sediment transport at the river Flaz

1.1.1 Introduction

The river Flaz is located in the canton Graubünden in Switzerland. A reach of 1.5 km long is taken as example for this tutorial. The reach contains a widening section created to protect the village of Samadan from flood event. The aim of this tutorial is to show the setup of the three configuration files for the numerical simulation with BASEMENT. First, a hydraulic simulation is performed to obtain a calibrated model at steady state. Then a morphological simulation is performed adding the morphological part to the result of the hydraulic simulation.

1.1.2 Computational Mesh

The computational mesh of the Flaz is imported from the tutorial of BASEMENT version 2.8. The 2dm file has been modified as explain in the pre-processing tutorial for small meshes in the User manual. There are two stringdefs for the inflow and outflow boundaries. The mesh has 14'457 cells, 7'446 vertices and the interpolation method “weighted” is used to convert the mesh from version 2.8 to a 3 compatible computational mesh. Figure 1.1 shows the bottom elevation of the river Flaz used in this tutorial.

1.1.3 Hydraulics

The configurations files (model.json, simulation.json and results.json) can be created and modified with the graphical user interface (GUI) or any text editor. The configuration files are saved in one folder and the simulation will automatically generate a new folder called “run” which contains the output.

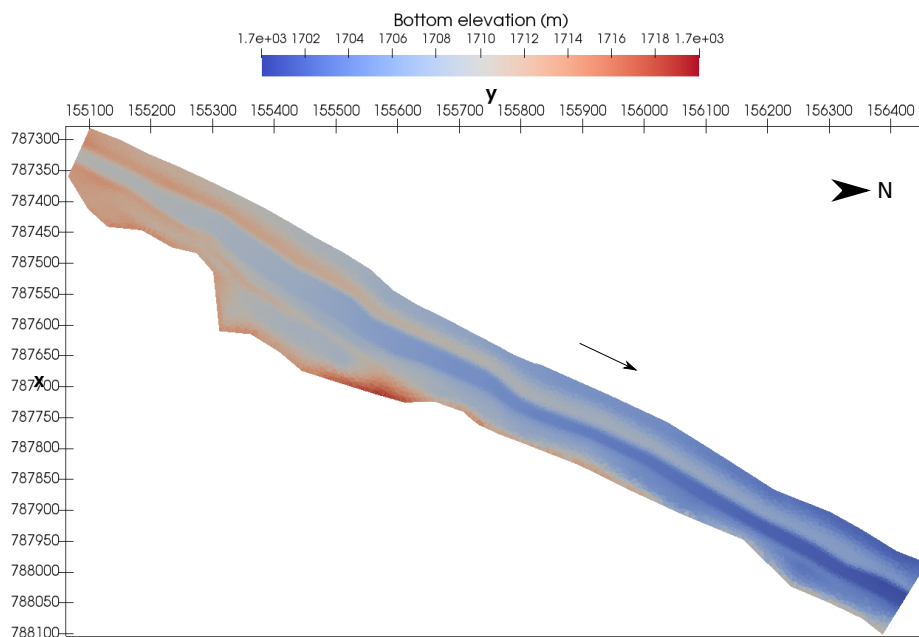


Figure 1.1 Planar view of the initial bottom elevation of the river Flaz

1.1.3.1 Setup the Configuration File model.json

The configuration file model.json for a hydrodynamic simulation has the following structure:

```
{
  "SETUP":{
    "simulation_name":"Flaz_steady_state",
    "DOMAIN": {
      "PHYSICAL_PROPERTIES": {...},
      "BASEPLANE_2D": {
        "GEOMETRY": {...},
        "HYDRAULICS": {
          "PARAMETER": {...},
          "FRICTION": {...},
          "TURBULENCE": {...},
          "BOUNDARY": {...},
          "INITIAL": {...}
        }
      }
    }
  }
}
```

The blocks `PHYSICAL_PROPERTIES` and `BASEPLANE_2D` are mandatory. The physical property is the gravity and the components of the `BASEPLANE_2D` contain information about the domain (`GEOMETRY`) and the simulation type (`HYDRAULICS`).

```
"PHYSICAL_PROPERTIES": {
```

```

    "gravity": 9.81
  }

```

The GEOMETRY part contains the path to the mesh file and different subsections as the interpolation method, a list of STRINGDEF for boundary conditions and a list of REGIONDEF to assign the friction, external sources and different interpolation methods.

```

"GEOMETRY": {
    "mesh_file": "Flaz_mesh.2dm",
    "INTERPOLATION": {
        "method": "weighted"
    },
    "STRINGDEF": [...],
    "REGIONDEF": [...]
}

"STRINGDEF": [
    { "name": "Inflow",
      "upstream_direction": "left"},
    { "name": "Outflow",
      "upstream_direction": "left"}
],

"REGIONDEF": [
    {
        "name": "one",
        "index": [1] },
    {
        "name": "two",
        "index": [2] },
    {
        "name": "three",
        "index": [3] },
    ...
]

```

The HYDRAULICS block contains the subsections PARAMETER for the hydraulic simulation only, FRICTION for each region, TURBULENCE parameters, BOUNDARY for the flow conditions and INITIAL for the condition at time t=0.0.

```

"PARAMETER": {
    "CFL": 0.95,
    "minimum_water_depth": 0.002,
    "fluid_density": 1000.0,
    "max_time_step": 100
}

"FRICTION": {
    "type": "strickler",
    "default_friction": 30,

```

```

    "regions": [
      {"region_name": "one",
       "friction": 28.0},
      {"region_name": "two",
       "friction": 30.0},
      {"region_name": "three",
       "friction": 35.0},
      ...
    ]
  }

"TURBULENCE": {
  "INITIAL": {
    "type": "zero"
  },
  "PARAMETER": {
    "turbulence_start": 0,
  },
  "REYNOLDS_STRESS": {
    "closure_model": "mix_length",
    "constants": {
      "turb_visc_max": 0.05
    }
  }
}

"BOUNDARY":{
  "STANDARD": [
    {"name": "Inflow",
     "string_name": "Inflow",
     "type": "uniform_in",
     "discharge_file": "Inflow_stationary.txt",
     "slope": 0.02},
    {"name": "Outflow",
     "string_name": "Outflow",
     "type": "uniform_out",
     "slope": 0.02}
  ]
}

"INITIAL":{
  "type": "dry"
}

```

The hydrograph is defined constant in a file “Inflow_stationary.txt”, where the time in seconds (left) and discharge in m^3/s (right) is indicated.

```

0.0, 50.0
3600.0, 50.0

```


1.1.3.2 Setup the Configuration File simulation.json

The configuration file simulation.json defines the simulation time parameters (seconds) in the block TIME and the different output types inside the OUTPUT block.

```
{
  "SIMULATION":{
    "TIME": {
      "start": 0.0,
      "end": 3600,
      "out": 600
    },
    "OUTPUT": [
      "water_surface",
      "flow_velocity_abs",
      "ns_hyd_discharge",
      "bottom_elevation",
      "spec_discharge",
      "water_depth"
    ]
  }
}
```

1.1.3.3 Set up the Configuration File results.json

The configuration file results.json defines the output format in the block EXPORT. Currently, xmdf is the only output format available.

```
{
  "RESULTS": {
    "EXPORT": [
      {"format": "xmdf"}
    ]
  }
}
```

1.1.3.4 Steady Flow Simulation

The simulation results are stored inside the results.h5 binary. By calling the python script BMv3NodestringResults.py available on the [BASEMENT Website](#), the discharge values at boundaries are extracted and stored in the Discharge.csv file, where the rows are the time steps and the columns represents the stringdef in their definition order (inside the .2dm file). The steady state is reached after 1200 seconds (Figure 1.2).

1.1.3.5 Model Calibration

The calibration of the friction value is done by comparing the water surface elevation between BASEMENT version 3 and version 2.8 at a cross section located in the middle of

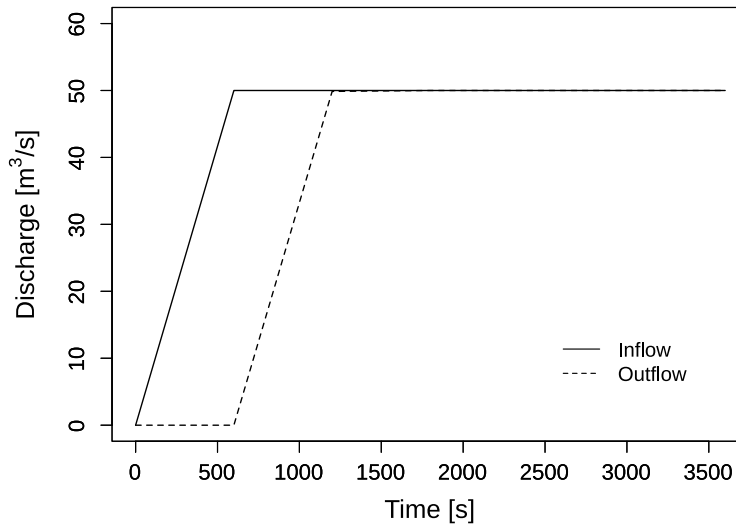


Figure 1.2 Inflow and outflow hydrograph at boundaries

the channel (Figure 1.3). The water surface elevation and the water depth values along the cross section were obtained using the software ParaView.

The resulting water depth and water surface elevation are compared in Figure 1.4. The steady flow simulation of BASEMENT version 3 provides similar results to those obtained with BASEMENT version 2.8. There is no need to modify the friction value defined in Section 1.1.3.1.

1.1.3.6 Unsteady Flow Simulation

The hydrograph based on the flood event of July 2004 provides unsteady flow conditions for the numerical simulation. The results of the steady flow simulation are stored in the binary `Flaz_steady_state_results.h5` inside the `run/` folder and taken as initial state. The other parameters defined in Section 1.1.3.1 don't change, except for the boundary block where the new discharge file (`Inflow_transient.txt`) replaces the stationary hydrograph. The initial block:

```
"INITIAL": {
    "type": "continue",
    "file": "../run/Flaz_steady_state_results.h5",
    "time": 3000.0
}
```

The run time in the configuration file `simulation.json` is increased to the last value of the discharge file (`Inflow_transient.txt`). A higher “end” value will take the last discharge value written on the hydrograph to run the simulation. The starting time corresponds to the smallest time value of the discharge file `Inflow_transient.txt`.

```
"TIME": {
```

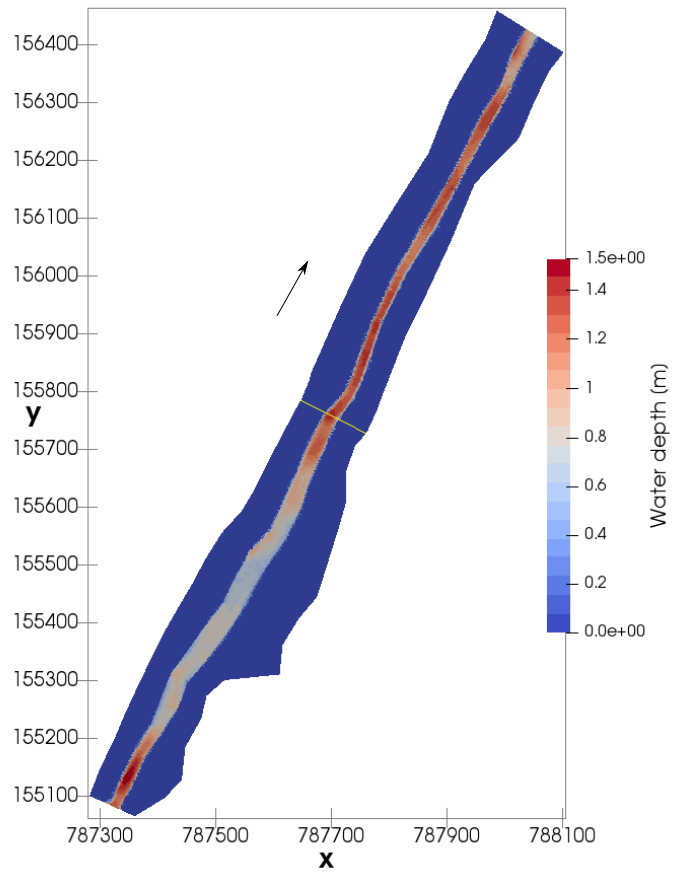


Figure 1.3 Water depth at the end of the steady flow simulation ($t=3600$ s) with the cross section location (yellow line)

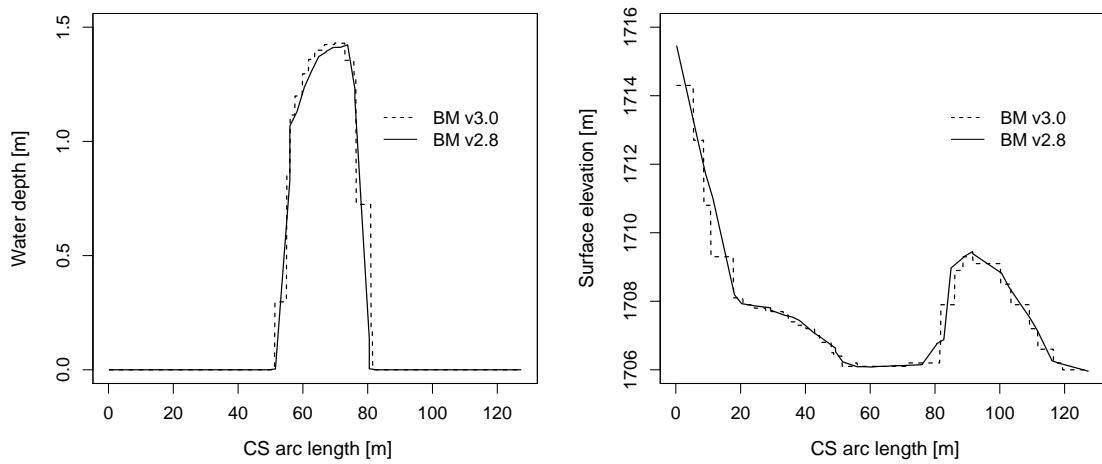


Figure 1.4 Cross sectional view of the water depth and surface elevation facing the opposite flow direction at the end of the steady flow simulation ($t=3600$ s)

```

    "start": 0.0,
    "end": 82000,
    "out": 2000
  }

```

After changing the discharge file, modifying the initial block in the setup and the time of the simulation, the model is ready to proceed with the numerical simulation.

1.1.4 Morphology

1.1.4.1 Setup the Configuration File model.json

The unsteady flow simulation is now converted into a morphodynamic simulation with a morphology block and starting from the results of the steady flow simulation. The inflow hydrograph and the initial blocks are the same as described in Section 1.1.3.6. Additionally, the block morphology is defined inside the model.json file with the following structure

```

{
  "SETUP":{
    "simulation_name":"Flaz_unsteady_morph",
    "DOMAIN": {
      "PHYSICAL_PROPERTIES": {...},
      "BASEPLANE_2D": {
        "GEOMETRY": {...},
        "HYDRAULICS": {...},
        "MORPHOLOGY": {
          "INITIAL":{...},
          "PARAMETER": {...},
          "BEDMATERIAL": {...},
          "BEDLOAD": {...}
        }
      }
    }
  }
}

```

Inside the morphology block, the initial conditions look like:

```

"INITIAL":{
    "type": "mesh"
}

```

The morphology parameters defines the density of sediments, the porosity and the time at which the morphodynamic simulation starts.

```

"PARAMETER": {
    "morphodynamic_start": 0.0,

```

```

    "sediment_porosity": 0.4,
    "sediment_density" : 2650.0
  }

```

The bed material is composed of uniform grains with one diameter (m). Fixed bed elevations are assigned to different regions to prevent a high erosion. The erosion is unlimited if the fix bed is not defined.

```

"BEDMATERIAL": {
  "GRAIN_CLASS": {
    "diameters": [0.050]
  },
  "FIXED_BED": {
    "type": "region_defined",
    "correction_accuracy": 0.0,
    "max_iteration": 300,
    "regions": [
      {"region_name": "one",
       "z_rel": -0.8},
      {"region_name": "two",
       "z_rel": 0.0},
      {"region_name": "three",
       "z_rel": 0.0},
      {"region_name": "four",
       "z_rel": -2.0},
      {"region_name": "five",
       "z_rel": 0.0},
      {"region_name": "six",
       "z_rel": -2.0},
      {"region_name": "seven",
       "z_rel": -2.0},
      {"region_name": "eight",
       "z_rel": 0.0},
      {"region_name": "nine",
       "z_rel": 0.0},
      {"region_name": "ten",
       "z_rel": 0.0},
      {"region_name": "eleven",
       "z_rel": -0.2},
      {"region_name": "twelve",
       "z_rel": -0.4}
    ]
  }
}

```

In the bedload block, the bedload transport formula is chosen and the morphological boundary conditions are defined. The boundary condition is defined as transport_capacity at the inflow boundary. The value of the sediment flux is averaged over the stringdef length and equally distributed (same value) among the edges. The outflow boundary has

been reduced to the bed width composed of 6 nodes only. Therefore, the nodes located on the channel levee of the outflowing stringdefs have been removed from the .2dm file (computational mesh) manually using a text editor. The stringdef definition remains unchanged and the outflow boundary is defined as equilibrium_out with the reference bottom elevation set to 1700.68 m. Additionally, lateral transport due to local slope bed slope is considered with a default value of 1.5 (see Reference Manual).

```
"BEDLOAD": {
    "FORMULA": {
        "type": "MPM_like",
        "factor":1.0,
        "coefficient":3.2,
        "exponent":1.6,
        "critical_value":0.047
    },
    "BOUNDARY":{
        "STANDARD": [
            {
                "name": "inflow_MOR",
                "string_name": "Inflow",
                "type": "transport_capacity",
                "boundary_factor": 0.8
            },
            {
                "name": "outflow_MOR",
                "string_name": "Outflow",
                "type": "equilibrium_out",
                "reference_bed_elevation": 1700.68
            }
        ]
    },
    "DIRECTION": {
        "LATERAL_SLOPE": {
            "factor": 1.5
        }
    }
}
```

An additional suspended load block can be defined as well. The erosion and deposition laws are chosen and the morphological boundary conditions are defined. The boundary condition is defined as an input concentration at the inflow boundary. The outflow boundary is a simple zero-gradient outflow.

```
"SUSLOAD": {
    "PARAMETER": {
        "suspended_diffusivity": [0.1],
    },
    "BOUNDARY": {
        "STANDARD": [
```

```

    {
      "name": "inflow_SUS",
      "string_name": "Inflow",
      "type": "concentration_in",
      "data1": 0.0001
    },
    {
      "name": "outflow_SUS",
      "string_name": "Outflow",
      "type": "zero_gradient_out"
    }
  ]
},
"INITIAL": {
  "type": "zero"
},
"SETTLING_VELOCITY": {
  "closure_model": "van_rijn"
},
"SHEAR_PARTITION": {
  "default_friction_susp": 67.0
},
"EROSION_RATE": {
  "closure_model": "van_rijn",
  "constants": {
    "critical_shields": 0.125
  }
},
"DEPOSITION_RATE": {
  "closure_model": "lin",
  "constants": {
    "param_m": 1.0
  }
}
}
}

```

1.1.4.2 Setup the Configuration File simulation.json

The simulation time defined in the simulation.json file is the same as for the unsteady flow in the hydraulics simulation and two additional outputs are defined.

```

{
  "OUTPUT": [
    "...",
    "water_depth",
    "delta_z",
    "ns_mor_discharge"
  ]
}

```

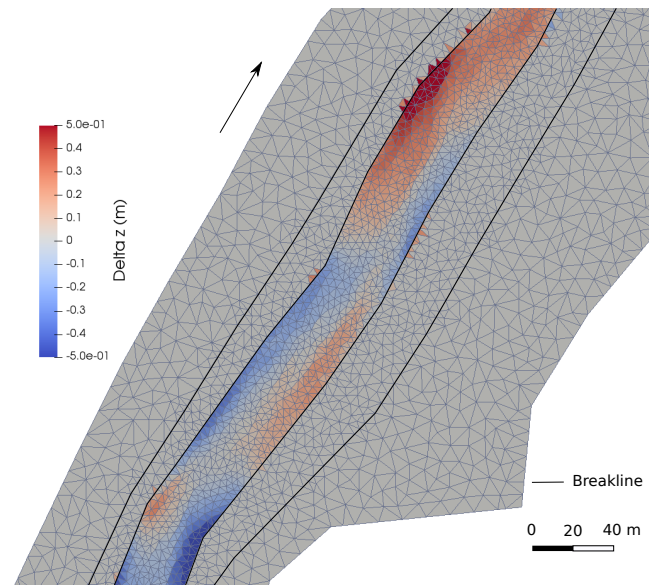


Figure 1.5 Planar view of the widening part of the river Flaz with the change in bed elevation (Δz) due to the flood event at the end of the morphodynamic simulation ($t=84'000$ s)

}

1.1.4.3 Results

The morphological changes of the river bed are observed on Figure 1.5. The software ParaView was used for the post-processing of the output file (.xdmf).

1.1.5 Passive tracers

1.1.5.1 Setup the Configuration File model.json

This section shows how the flow simulation could be augmented with scalar advection with a TRACERS block. A maximum of 5 tracers are presently supported. Additionally, the block tracers is defined inside the model.json file with the following structure:

The configuration file model.json for a tracers simulation has the following structure:

```
{
  "SETUP":{
    "simulation_name":"Flaz_tracers",
    "DOMAIN": {
      "PHYSICAL_PROPERTIES": {...},
      "BASEPLANE_2D": {
        "GEOMETRY": {...},
        "TRACERS": {
          "PARAMETER": {...},
          "BOUNDARY": {...},
          "INITIAL": {...},

```



```

        "SOURCE": {...}
      }
    }
  }
}

```

The TRACERS block contains the subsections PARAMETER, BOUNDARY and INITIAL:

```

"PARAMETER": {
  "tracers_start": 0.0,
  "num_tracers": 3,
}

"BOUNDARY":{
  "STANDARD": [
    { "name": "tracer_inflow",
      "string_name": "Inflow",
      "type": "discharge_in",
      "tracer1_file": "Inflow_tracer1.txt",
      "tracer2_file": "Inflow_tracer2.txt",
      "tracer3_file": "Inflow_tracer3.txt"},
    { "name": "Outflow",
      "string_name": "Outflow",
      "type": "zero_gradient_out"}
  ]
}

```

The tracer discharge series are of the same format of the hydrograph: two columns with time (first col.) and imposed quantity (discharge or concentration) (second col.). To specify constant values use “tracerX” followed by the intended value, instead of “tracerX_file”.

```

"INITIAL":{
  "type": "zero"
}

"INITIAL":{
  "type": "uniform",
  "tracers": [0.0,0.25,0.5]
}

"INITIAL":{
  "type": "region_defined",
  "regions": [
    {"region_name": "one",
      "tracers": [0.0,0.1,0.2]},
    {"region_name": "two",
      "tracers": [0.4,0.3,0.2]}
  ]
}

```

The initial conditions are prescribed in array format with the “tracers” keyword. The supported types of initial conditions with this input method are “uniform” and “region_defined”. The remaining options are “zero”, with no additional inputs, and “continue” accepting “file” and “time” parameters.

A source block within the tracers block would look like:

```
"SOURCE": [
  { "name": "total_exact1",
    "type": "total",
    "data1_file": "./scalars1.dat",
    "data2_file": "./scalars2.dat",
    "data3_file": "./scalars3.dat",
    "data4_file": "./scalars4.dat",
    "data5_file": "./scalars5.dat",
    "region_name": "one",
    "sink": "exact" }
]
```

And, as in the boundaries case, to specify constant values use “dataX” followed by the intended value, instead of “dataX_file”.

1.1.5.2 Setup the Configuration File simulation.json

The configuration file simulation.json defines the simulation time parameters (seconds) in the block TIME and the different output types inside the OUTPUT block.

```
{
  "SIMULATION":{
    "TIME": {
      "start": 0.0,
      "end": 3600,
      "out": 600
    },
    "OUTPUT": [
      "water_surface",
      "flow_velocity_abs",
      "ns_hyd_discharge",
      "bottom_elevation",
      "spec_discharge",
      "water_depth",
      "tracer1",
      "tracer2",
      "tracer3"
    ]
  }
}
```

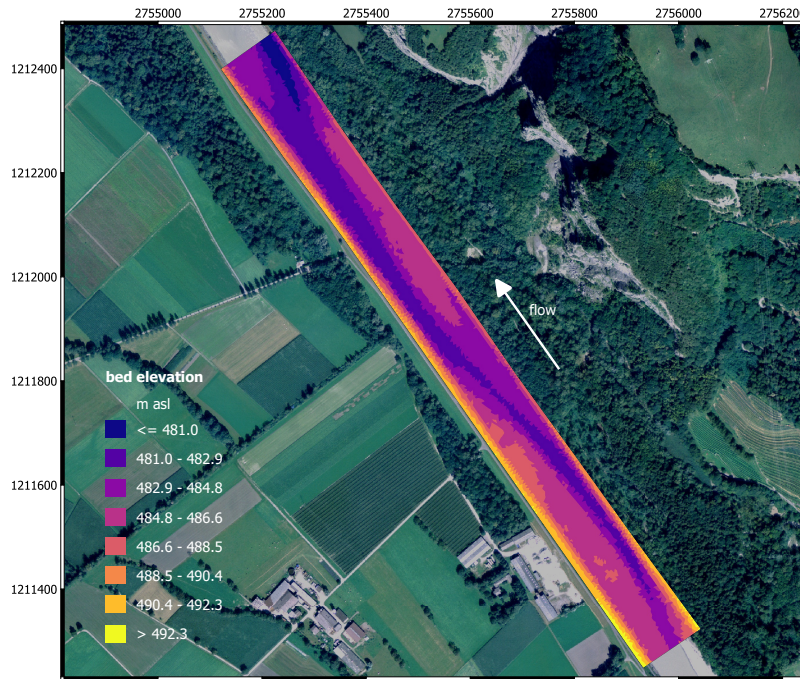


Figure 1.6 Planar view of the initial bottom elevation of the Alpine Rhine river

1.1.5.3 Set up the Configuration File results.json

The configuration file results.json defines the output format in the block EXPORT. Currently, xdmf is the only output format available.

```
{
  "RESULTS": {
    "EXPORT": [
      {"format": "xdmf"}
    ]
  }
}
```

1.2 Vegetation dynamics and bedload transport

1.2.1 Introduction

The aim of this tutorial is to show the specific setup of the configuration files for numerical simulations with BASEMENT that include vegetation and bed load transport. For this purpose, the model is applied to a 1 km-long reach of the Alpine Rhine River located at the boundary between Switzerland and Lichtenstein. This particular river reach is characterized by an alternating sequence of gravel bars, which are hotspot for riparian vegetation growth. This tutorial presents the simulation of the flood event of 2005.

1.2.2 Computational Mesh

The computational mesh of the Alpine Rhine river was created ad-hoc to show the main model functionalities with the vegetation module activated and for application with BASEMENT version 3. The mesh has 9799 number of cells with 5149 vertices. The MATID was defined on the gravel bars, the main channel, and the banks to differentiate the bed properties. Figure 1.6 shows the bed elevation of the river used in the simulation.

1.2.3 Morphology with Vegetation

The simulation in the tutorial includes a steady-state hydrodynamic simulation and an unsteady morphodynamic simulation with vegetation. The first one is used to get the initial conditions for the hydraulic variables. The unsteady simulation

The setup of the configuration files follows the same procedure seen in the Flaz tutorial for hydraulics and morphology (Section 1.1.3.1 and Section 1.1.4.1). Here only the vegetation part is shown in detail.

1.2.3.1 Setup the Configuration File model.json

The model is set up with the blocks HYDRAULICS, MORPHOLOGY, and VEGETATION activated. The structure of the VEGETATION block in the file model.json is:

```
{
  "SETUP": {
    "simulation_name": "tutorial_morpho_veg_flood",
    "DOMAIN": {
      "PHYSICAL_PROPERTIES": {...},
      "BASEPLANE_2D": {
        "GEOMETRY": {...},
        "HYDRAULICS": {...},
        "MORPHOLOGY": {...},
        "VEGETATION": {
          "INITIAL": {},
          "PARAMETERS": {}
        }
      }
    }
  }
}
```

The blocks INITIAL and PARAMETERS are both mandatory. The initial conditions for vegetation can be set up using a restart file from a previous simulation (as for the hydraulics) or with input values for the aboveground, belowground biomass, and the rooting depth. In the latter case, the structure is:

```
"INITIAL": {
  "type": "region_defined",
```

```

"regions": [
  {
    "aboveground_biomass": 0.4,
    "belowground_biomass": 0.6,
    "rooting_depth": 1.5,
    "region_name": "bar_up"
  },
  {
    "aboveground_biomass": 0.8,
    "belowground_biomass": 0.2,
    "rooting_depth": 0.5,
    "region_name": "bar_dw"
  },
  {
    "aboveground_biomass": 0.0,
    "belowground_biomass": 0.0,
    "rooting_depth": 0.0,
    "region_name": "channel"
  },
  ...
]
}

```

In this tutorial the vegetation was placed only in the gravel bars and using different characteristics for each of the bar (Figure 1.7). It is important that the sum of the aboveground and belowground biomass equal 1 at maximum. The biomass values are dimensionless, while the rooting depth is expressed in meter.

A number of parameters are needed to run simulation with vegetation. These are all collected in the block PARAMETERS, which has the following elements:

```

"PARAMETER": {
  "burial_factor": 1,
  "plant_height_exp": 1,
  "plant_height_fact": 1,
  "uprooting_factor": 1,
  "veg_strickler_fact": 15,
  "veg_theta_critical_fact": 0.02
}

```

The parameters that are mandatory are the Strickler coefficient, the critical Shield parameter valid for completely vegetated bed, and the parameters for calculating the plant height starting from the aboveground biomass (“plant_height_exp” and “plant_height_fact”). The others are by default set to 1. It is important to note that vegetation should be used in combination with a “MPM_like” formula for bedload transport and a “strickler” type friction closure for the hydrodynamics.

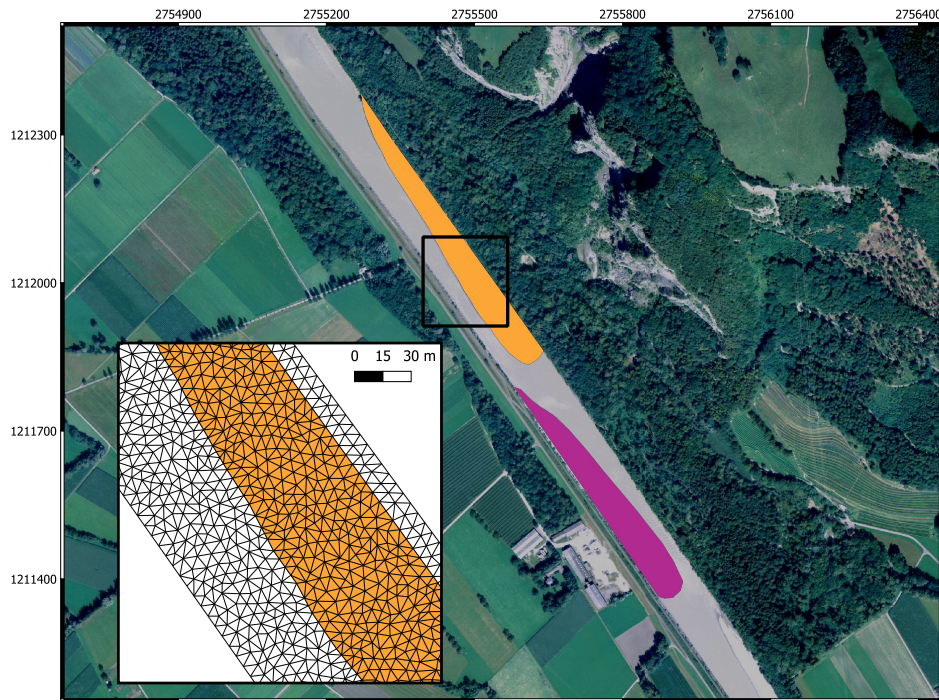


Figure 1.7 Initial location of vegetation on the two bars and an extract of the computational mesh used.

1.2.3.2 Setup the Configuration File simulation.json

The configuration file simulation.json defines the simulation time parameters (seconds) in the block TIME and the different output types inside the OUTPUT block.

```
{
  "SIMULATION": {
    "OUTPUT": [
      "bottom_elevation",
      "flow_velocity",
      "friction_chezy",
      "water_surface",
      "delta_z",
      "water_depth",
      "theta_critical",
      "trsp_capacity",
      "aboveground_biomass",
      "belowground_biomass",
      "rooting_depth"
    ],
    "TIME": {
      "end": 111600.0,
      "out": 11160.0,
      "start": 0.0
    },
    "TIMESTEP": {
```

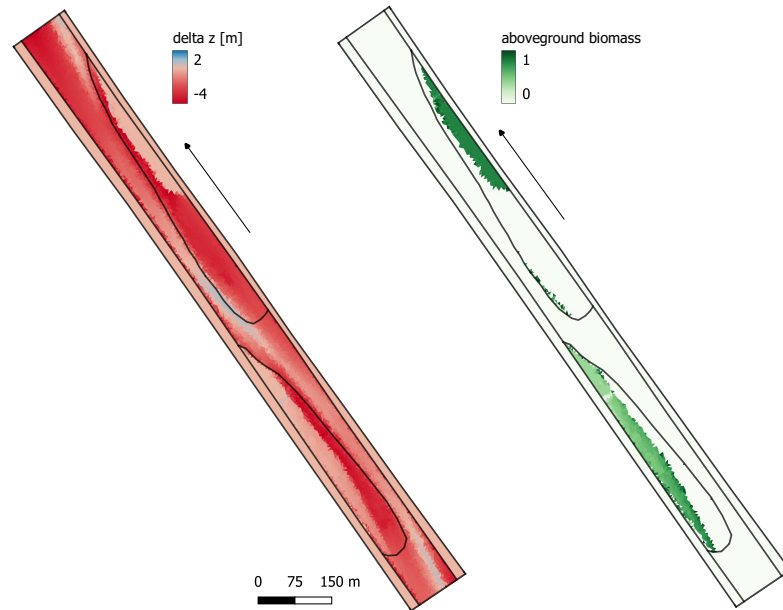


Figure 1.8 Results for the bed elevation and the aboveground biomass after the flood (at $t=111600$ s). Breaklines are highlighted in black.

```

    "init": 0.02,
    "minimum": 0.0001
  }
}
}

```

There are three additional available outputs for vegetation: the aboveground biomass, the belowground biomass, and the rooting depth.

1.2.3.3 Set up the Configuration File results.json

The configuration file results.json defines the output format in the block EXPORT. Currently, xmdf is the only output format available.

```

{
  "RESULTS": {
    "EXPORT": [
      {"format": "xmdf"}
    ]
  }
}

```

1.2.3.4 Results

An example of the results of the simulation of the 2005 flood in the Alpine Rhine river considering vegetation is shown in Figure 1.8. Vegetation is removed in most parts of the bars as a result of uprooting, while the aboveground biomass of surviving vegetation changed because of erosion and deposition processes, which modify biomass redistribution.

1.3 Post-Processing

BASEMENT version 3.x simulation results are generated inside the scenario directory and stored in binary format “.h5”. These results can be converted into a specific output type that can be visualized and modified by external softwares. Two types of output are available, “.xdmf” for the values calculated over the cells and “.csv” for the values calculated at stringdefs. The “.xdmf” output type is defined in the configuration file results.json (Section 1.1.3.3). The delimited text file (.csv) is generated by calling the python script “BMv3NodestringResults.py” available on the [BASEMENT Website](#).

1.3.1 ParaView

The free and open source application ParaView is used to generate 2D views of BASEMENT version 3.x simulation results. The .xdmf file can be imported into ParaView to visualize the output data calculated over the cells like for example the water_depth, bottom_elevation and flow_velocity_abs.

Figure 1.5 gives an example of post-processing using ParaView for the morphological changes (delta z). A tutorial of the software ParaView is given in section 2.3 of BASEMENT 2.8 Tutorial for 3D visualization of the results. Be aware, only 2D visualization is available in ParaView for the output of BASEMENT version 3.x. Therefore, only a planar view of the results is available (see Figure 1.5).

1.3.2 Extract Data from Result File

This tutorial shows how to extract values from the stringdefs, i.e. boundaries to obtain the results of Figure 1.2. The python script BMv3NodestringResults.py can be downloaded from www.basement.ethz.ch and should be saved inside the scenario directory generated. The python script will read the stringdef data stored inside the _results.h5 file and convert them into a delimited text format (.csv). The data calculated at the stringdef are the discharge [m³/s], the mean water surface elevation (wse) [m], the wetted area [m²], the mean bottom elevation [m], reference elevation (talweg) [m], wetted geometric length [m], total water volume stored in cells of the stringdef [m³], total conveyance of cells [m³/s], the morphological flux [m³/s] and the bedload transport capacity [m³/s].

To generate the .csv text file:

1. Save the BMv3NodestringResults.py file inside the scenario directory
2. Open a command window
3. Change folder and go inside the scenario directory

4. Call the python script with

```
$ python BMv3NodestringResults.py
```

As output, a result.csv, discharge.csv and time step.csv are generated. The discharge.csv provides the discharge value for each stringdef (columns) listed in the same order of appearance as in the .2dm file. The rows stand for the simulation time step at which the output are generated (first row is the initial time $t= 0.0$ s). The number of time step is given as a list in the time step.csv file. Every available result of the stringdefs is defined in the header of the results.csv file, where the rows correspond to the list of stringdefs in the same order of appearance as in the .2dm file and for every time step.

Test cases

2.1 Introduction and Backends

2.1.1 Introduction

The test cases present well-defined hydro- and morphodynamic numerical simulations that are used to assess the performance and accuracy of the simulations with BASEMENT version 3. The test cases have an analytical solution to which the numerical solution is compared in order to evaluate the accuracy of the results. The numerical simulations are executed on different backends that influence the performance of the simulation.

2.1.2 Backends

Different backends are used to execute the simulations of the test cases. The different backends are: a central processing unit (CPU) with a sequential application on 1 core, CPU with parallel applications (OpenMP) on 2, 4, 8, 16 and 32 cores and graphic processing units (GPU) with a compute unified device architecture (CUDA) with single and double precision. The features of the GPU card are shown in Table 2.1.

Table 2.1 Features of the GPU hardware used for the numerical simulations

Card	K20	P100	RTX 2080Ti	GTX 1080 Ti	GTX 1070 Ti	GTX 1050 Ti
Memory [GB]	5	12	11	11	8	4
Architecture	Kepler	Pascal	Turing	Pascal	Pascal	Pascal
Bandwidth [GB/s]	208	549	616	484	256	112
CUDA cores	2496	3584	4352	3584	2432	768

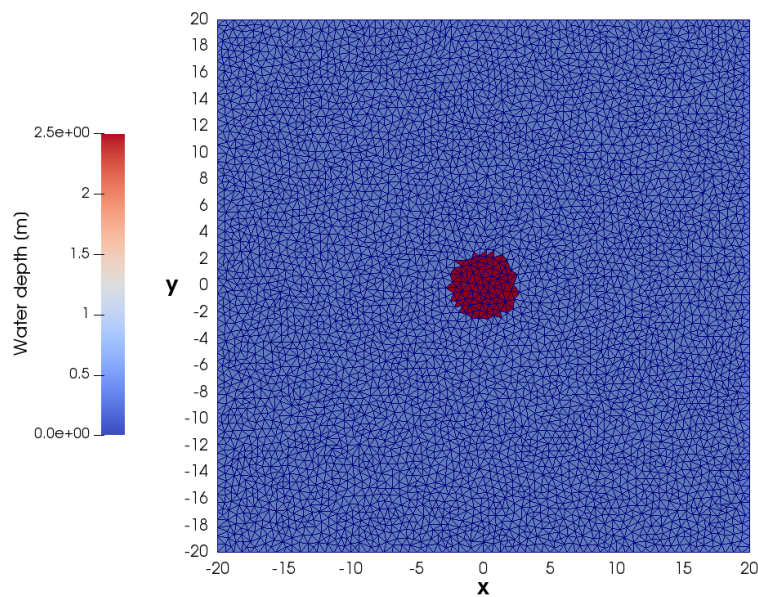


Figure 2.1 Computational domain of the circular dam break (10k cells) with initial water depth.

2.2 Circular dam break

2.2.1 Description

The circular dam break problem represents a 2D Riemann problem based on the sudden collapse of an idealized circular dam over a horizontal bottom. The aim is to evaluate the ability of the model to solve the wave propagation, i.e. the complex interaction of shock and rarefaction waves induced by a dam break event. The results are quantitatively compared with a reference solution obtained as described in Toro (2001).

2.2.2 Geometry and Initial Conditions

The computational domain is a squared area of size 40 x 40 m and composed of unstructured triangular cells. The circular dam has a diameter of 5 m and is located at the center of the computational domain ($x = 0$, $y = 0$). Initially, the water is at rest and the depth inside the circular dam is 2.5 m and 0.5 m over the surrounding domain. No friction and no slope (horizontal bottom) is considered and the CFL number is set to 0.9. As the simulation starts (time 0.0 s), the dam is removed and the subsequent wave pattern is observed during 4.7 s, after which the simulation stops. Different mesh resolutions are used in the test case, the smallest mesh resolution contains exactly 9'927 cells (10k), the second 49'450 cells (50k), the third 99'416 cells (100k), the fourth 497'092 cells (500k) and the finest mesh resolution contains 994'092 cells (1000k). Figure 2.1 shows the initial conditions of the circular dam break with the computational domain of 10k cells.

2.2.3 Results

The evolution of the water depth is described along a reference cross-section located between $(x = -20, y = 0)$ and $(x = 20, y = 0)$, see Figure 2.2. The reference solution is obtained from Toro (2001) using the exact Riemann solver on a mesh of about 1000 cells. After the collapse of the circular dam at $t = 0.0$ s, the primary shock wave propagates outwards. At the same time, a rarefaction wave that propagates towards the center of the dam is observed. The rarefaction wave will implode at the grid center before $t=0.4$ s and then travel in outward direction inducing a rapid drop of the water elevation which will reach a level below the initial outer water surface elevation ($t=1.4$ s) in the center area. The primary shock wave travels outwards with decreasing strength while a secondary shock wave develops in opposite direction towards the center and finally generates a jump in the water depth at the grid center ($t=4.7$ s).

The results on Figure 2.2 show how the solution obtained with BASEMENT version 3 (first order HLLC method) correctly converges to the reference solution as the grid is refined. The cylindrical symmetry of the wave propagation in BASEMENT is maintained, even if water surface modulations are observed along the primary shock wave.

The relative error is computed for the water depth (e_H) and speed (e_u) using eq. 2.1 and for various reference elevations. The result is displayed in Figure 2.3.

$$e_X = \frac{|X_{BM} - X_{ref}|}{X_{ref}} \quad (2.1)$$

Where X stands either for the water surface elevation H or the velocity u with X_{BM} the result of the simulation with BASEMENT and X_{ref} the reference value of Toro (2001).

The relative L^2 norm error (eq. 2.2, e.g Vanzo et al. (2016)) is calculated for each mesh size using the water surface elevation of the simulation result of BASEMENT (H_{BM}) and the references solution (H_{ref}) of Toro (2001). The result is shown on Table 2.2. The relative norm error decreases for finer meshes.

$$L^2 = \sqrt{\frac{\sum_{i=1}^N (H_{ref}(i) - H_{BM}(i))^2}{\sum_{i=1}^N H_{ref}(i)^2}} \quad (2.2)$$

Table 2.2 Relative L^2 norm error of the water surface elevation H compared to the reference solution of Toro (2001) at $t=4.7$ s.

	10k	50k	100k	500k	1000k
L^2	0.1134	0.0523	0.0453	0.0184	0.0145

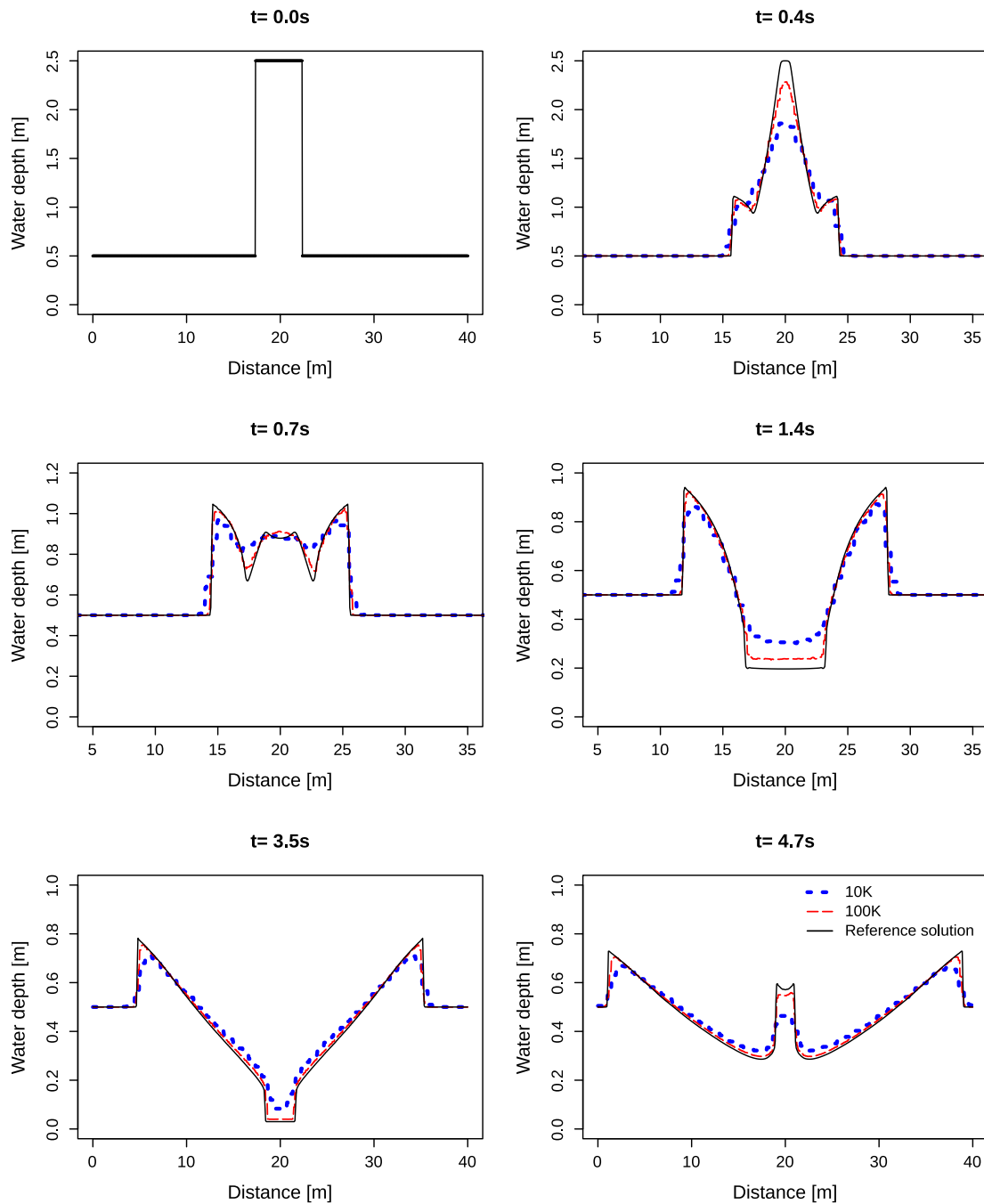


Figure 2.2 Snapshots of the water depth evolution along the reference cross-section. Comparison between BASEMENT simulations with a computational grid of 10k cells, 100k cells and the reference solution of Toro (2001).

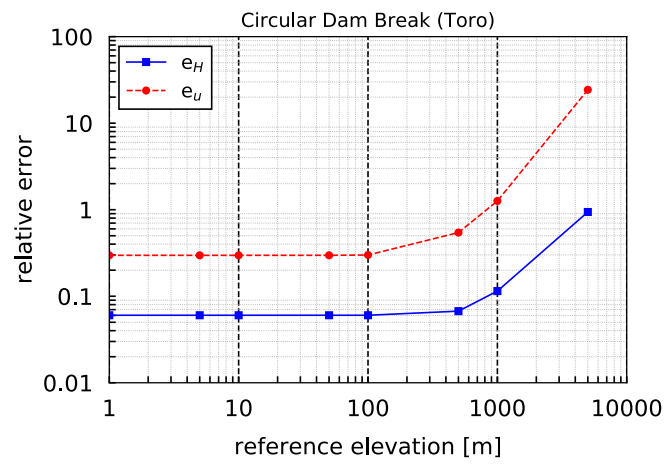


Figure 2.3 Relative error compared to the reference solution of Toro (2001)

2.2.4 Performance

The performance is evaluated in terms of effective computation time and in terms of speedup S . The latter is a measure of parallelization efficiency. The speedup S is calculated as the division of the sequential runtime T_1 (of each mesh size respectively) by the runtime with a certain number of cores T_N or a specific GPU card.

2.2.4.1 Ubuntu

Tables 2.4, 2.5 and 2.6 contain the execution time and speedup of all the simulations performed on different backends under Linux. The backends belong to two categories, either in Central Processor Units (CPU) or Graphics Processor Units (GPU). The CPU run simulations exclusively with double precision, while GPU can perform simulations with single or double precision. More details are explained in Section 2.1.2.

Table 2.3 Computational time (s) and speedup (in parentheses) of the circular dam break simulations for CPU simulations under Ubuntu 16.04 (Intel Xeon Gold 6154, 3.00GHz)

Mesh size	Xeon 1 Double	Xeon 2 Double	Xeon 4 Double	Xeon 8 Double	Xeon 16 Double	Xeon 32 Double
10k	0.16	0.19 (1.49x)	0.11 (2.46x)	0.07 (3.33x)	0.04 (4.18x)	0.03 (5.31x)
50k	1.88	1.08 (1.73x)	0.57 (3.29x)	0.33 (5.70x)	0.20 (9.31x)	0.15 (12.68x)
100k	5.44	3.06 (1.77x)	1.62 (3.35x)	0.89 (6.12x)	0.52 (10.4x)	0.35 (15.47x)
500k	63.63	34.49 (1.85x)	17.71 (3.59x)	9.28 (6.86x)	5.06 (12.57x)	3.07 (20.72x)
1000k	190.39	101.66 (1.87x)	51.83 (3.67x)	26.98 (7.06x)	14.36 (13.26x)	8.75 (21.77x)

Table 2.4 Computational time (s) and speedup (in parentheses) of the circular dam break simulations for CPU simulations under Ubuntu 16.04 (Intel Xeon E5-2667 v3 @ 3.20GHz)

Mesh size	Xeon 1 Double	Xeon 2 Double	Xeon 4 Double	Xeon 8 Double	Xeon 16 Double
10k	0.16	0.19 (1.49x)	0.11 (2.46x)	0.07 (3.33x)	0.04 (4.18x) 0.03 (5.31x)
50k	1.88	1.08 (1.73x)	0.57 (3.29x)	0.33 (5.70x)	0.20 (9.31x) 0.15 (12.68x)

Mesh size	Xeon 1 Double	Xeon 2 Double	Xeon 4 Double	Xeon 8 Double	Xeon 16 Double
100k	5.44	3.06 (1.77x)	1.62 (3.35x)	0.89 (6.12x)	0.52 0.35 (10.4x) (15.47x)
500k	63.63	34.49 (1.85x)	17.71 (3.59x)	9.28 (6.86x)	5.06 3.07 (12.57x) (20.72x)
1000k	190.39	101.66 (1.87x)	51.83 (3.67x)	26.98 (7.06x)	14.36 8.75 (13.26x) (21.77x)

Table 2.5 Computational time (s) and speedup (in parentheses) of the circular dam break simulations for GPU simulations

Mesh size	Xeon 1 Double	RTX 2080Ti Single	RTX 2080Ti Double	Tesla K20 Single	Tesla K20 Double	Tesla P100 Single	Tesla P100 Double
10k	0.16	0.04 (4.41x)	0.04 (4.10x)	0.06 (2.86x)	0.05 (2.99x)	0.04 (3.85x)	0.04 (4.04x)
50k	1.88	0.15 (12.18x)	0.19 (9.74x)	0.24 (7.90x)	0.27 (7.01x)	0.18 (10.5x)	0.18 (10.53x)
100k	5.44	0.30 (18.01x)	0.37 (14.65x)	0.51 (10.61x)	0.59 (9.23x)	0.36 (15.28x)	0.37 (14.67x)
500k	63.63	1.66 (38.37x)	2.57 (24.72x)	3.42 (18.61x)	4.67 (13.61x)	2.13 (29.84x)	2.52 (25.28x)
1000k	190.39	3.63 (52.48x)	6.45 (29.54x)	8.63 (22.05x)	12.45 (15.29x)	5.03 (37.87x)	6.28 (30.33x)

Table 2.6 Computational time (s) and speedup (in parentheses) of the circular dam break simulations for GPU simulations

Mesh size	Xeon 1 Double	GTX 1050Ti Single	GTX 1050Ti Double	GTX 1070Ti Single	GTX 1070Ti Double	GTX 1080Ti Single	GTX 1080Ti Double
10k	0.16	0.04 (3.98x)	0.05 (2.93x)	0.03 (4.42x)	0.04 (4.00x)	0.04 (4.26x)	0.04 (4.05x)
50k	1.88	0.20 (9.28x)	0.34 (5.53x)	0.13 (11.1x)	0.21 (8.78x)	0.16 (11.81x)	0.19 (9.68x)

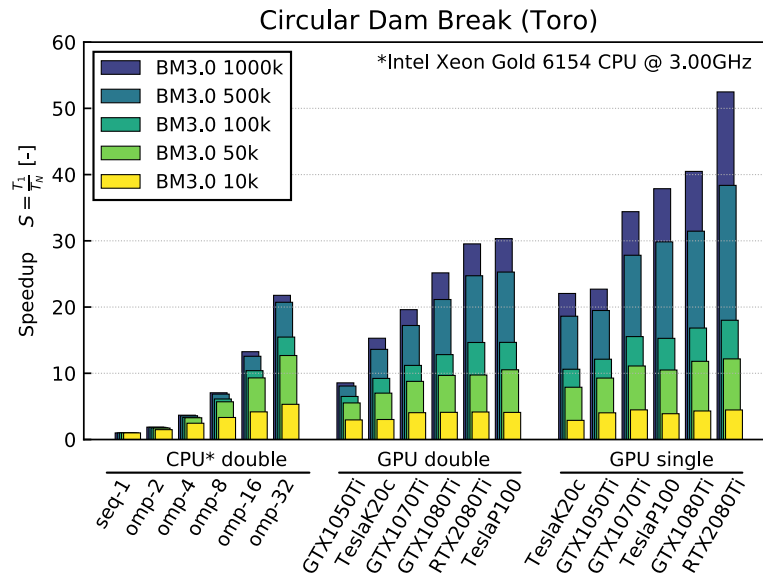


Figure 2.4 Speedup for CPU (double precision) and GPU (single and double precision) backends for the circular dam break test case.

Mesh size	Xeon 1 Double	GTX	GTX	GTX	GTX	GTX	GTX
		1050Ti Single	1050Ti Double	1070Ti Single	1070Ti Double	1080Ti Single	1080Ti Double
100k	5.44	0.45 (12.13x)	0.84 (6.5x)	0.30 (15.54x)	0.49 (11.19x)	0.21 (16.83x)	0.42 (12.82x)
500k	63.63	3.27 (19.48x)	7.88 (8.08x)	1.96 (27.82x)	3.70 (17.21x)	2.02 (31.45x)	3.01 (21.14x)
1000k	190.39	8.55 (22.70x)	22.26 (8.55x)	5.53 (34.40x)	9.71 (19.61x)	4.70 (40.48x)	7.57 (25.16x)

Figure 2.4 shows the speedup achieved by the different backends. The sequential and OpenMP backends were run on processors of type Intel Xeon Gold 6154 (3.00GHz) with two sockets and with 18 cores per socket. The largest speedups are obtained for certain GPU cards using single precision. But also by using the GPU backend with double precision, the simulation time can be reduced significantly compared to sequential computation. It should be noted that the results of simulations with single and double precision can vary greatly depending on the problem. Further, it can be observed that the speedup greatly depends on the problem size. For smaller mesh, the speedup obtained by increasing the number of cores or by using GPU cards can be limited. The speedup increases particularly for meshes with a fine resolution (500K and 1000K) using GPU.

Figure 2.5 compares the speedup with the number of threads (CPU) between the different mesh resolutions. The simulations were performed using the CPU backend with Intel Xeon

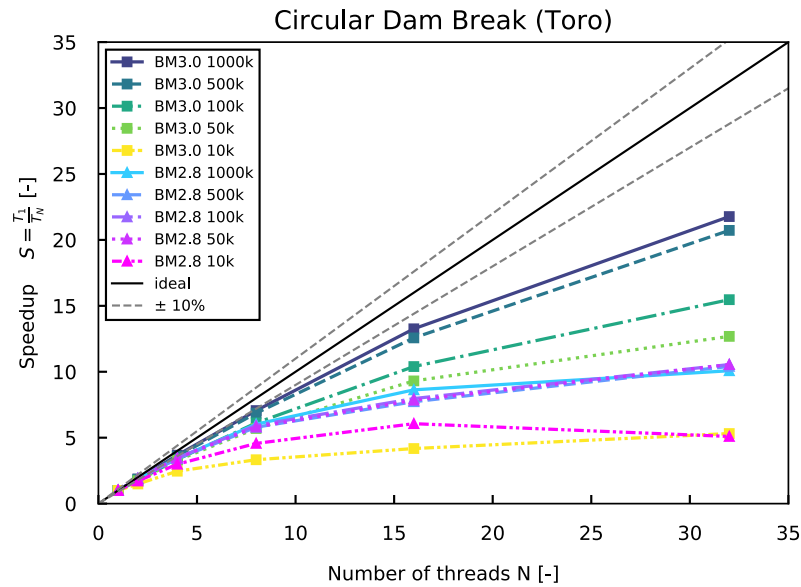


Figure 2.5 Speedup of the computational time $[T_N]$ using different number of threads (CPU) compared to the time of the sequential backend Xeon1 $[T_1]$ for the circular dam break

Gold 6154 (3.00GHz) processors. The speedup is more effective for meshes with a fine resolution than for those of coarse resolution, where the increase in number of cores leads to a plateau.

2.2.4.2 Windows

Tables 2.7 contains the execution time and speedup of all the simulations performed on different backends under Windows. The simulations were run on Prozessor Intel Xeon E-2174G (3.80GHz) processors with 4 cores and 2 threads per core (8 logical cores using HyperThreading). The performance scales adequately up to 4 cores. The use of 8 logical usings (HyperThreading) does not results in a significant improvement of performance compared to using 4 physical cores.

Table 2.7 Computational time (s) and speedup (in parentheses) of the circular dam break simulations for CPU simulations under Windows 10 (Intel Xeon E-2174G, 3.80GHz)

Mesh size	Xeon 1 Double	Xeon 2 Double	Xeon 4 Double	Xeon 8 Double
10k	0.23	0.14 (1.67x)	0.08 (3.0x)	0.09 (2.49x)
50k	2.80	1.58 (1.77x)	0.98 (2.84x)	0.81 (3.44x)
100k	8.08	4.73 (1.71x)	3.16 (2.56x)	2.58 (3.13x)

Mesh size	Xeon 1 Double	Xeon 2 Double	Xeon 4 Double	Xeon 8 Double
500k	95.01	51.78 (1.83x)	30.55 (3.11x)	23.62 (4.02x)
1000k	275.02	149.84 (1.84x)	90.00 (3.06x)	67.25 (4.09x)

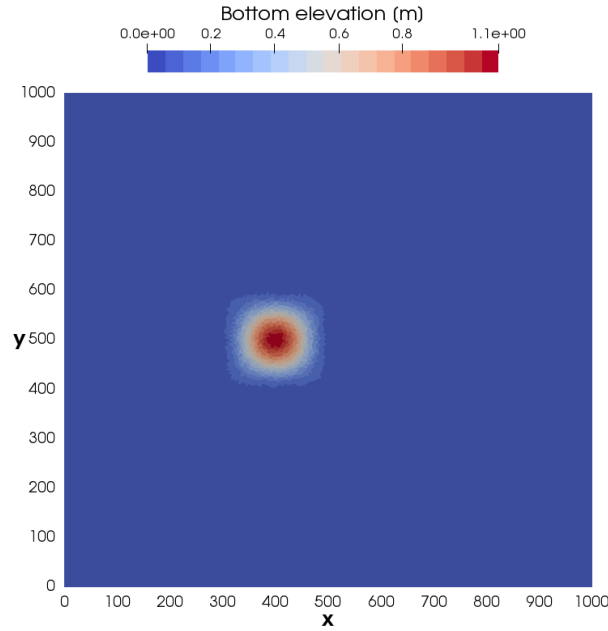


Figure 2.6 Initial bottom elevation of the conical dune, maximum elevation of 1.1 m at $[x=400, y=500]$.

2.3 Conical Dune

2.3.1 Description

The conical dune test proposed by Hudson and Sweby (2005) is used to assess the accuracy of two dimensional morphodynamic models under sub-critical flow and without friction. The simulation describes the evolution of an initial conical dune of sediments that evolves in a star shaped pattern characterized by a spread angle α_s . Numerical results are compared with the approximate analytical solution for the spread angle of the disturbance front proposed by de Vriend (1987).

2.3.2 Geometry and Initial Conditions

The computational mesh is a squared area of size 1000 x 1000 m with an initial bottom elevation $z_{B,initial}$ (see Figure 2.6):

$$z_{B,initial} = \begin{cases} 0.1 + \sin^2\left(\frac{\pi(x-300)}{200}\right) \sin^2\left(\frac{\pi(y-400)}{200}\right) & \text{for } x \in [300, 500] \\ & \text{and } y \in [400, 600] \\ 0.1 & \text{otherwise} \end{cases} \quad (2.3)$$

An inflow boundary condition of Froude type is defined along the y-axis at $x=0$ setting a constant unit discharge of 10 m/s. At $x=1000$ m, a h-Q relation is defined as outflow boundary condition. The initial water depth is 10 m and the water surface elevation is kept constant at the boundaries. The Strickler coefficient is set to $K_s = 10^7 [m^{1/3}/s]$ in order to obtain an almost frictionless simulation. The CFL number is set to 0.8, the

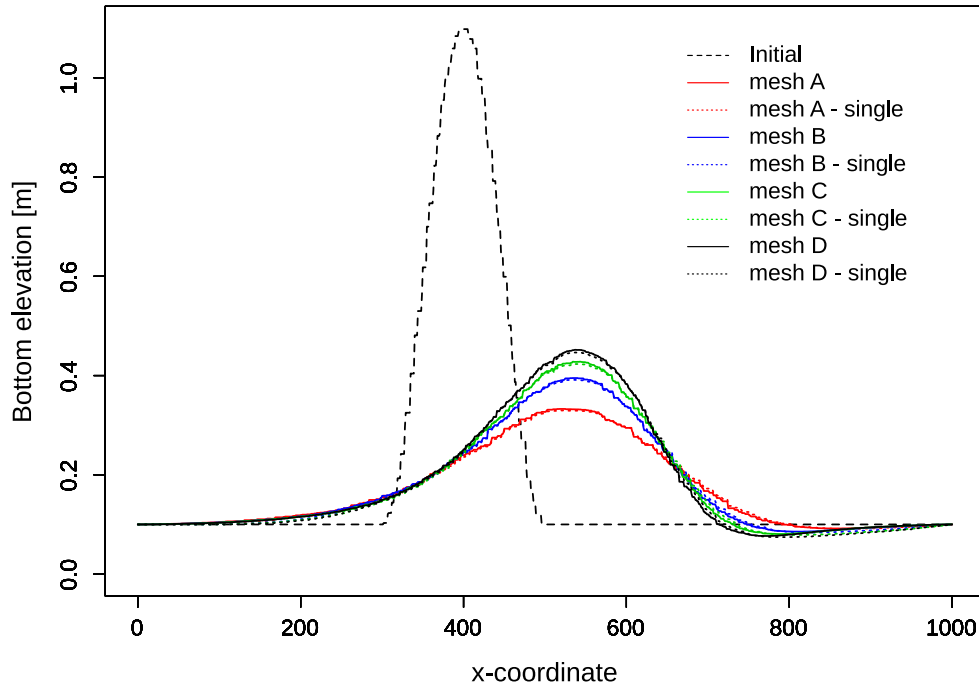


Figure 2.7 Longitudinal bottom elevation profile at $y=500$ m for initial conditions and after 100h of simulation for the meshes A, B, C and D with double and single precision

porosity to 0.4 and the morphodynamic boundary conditions are at equilibrium. Bed load transport is computed using the Grass formula with the parameters $A_G = 0.001002$ and $m_G = 3$ assuming a slow interaction between the sediment layer and the water flow. The analytical solution for the spread angle (eq. 2.4) proposed by de Vriend (1987) gives a value of $\alpha_{s,ref} = 21.787^\circ$.

$$\alpha_s = \arctan\left(\frac{3\sqrt{3}(m_G - 1)}{9m_G - 1}\right) \quad (2.4)$$

The tests were performed with different computational mesh resolution, mesh A has 30160 cells (30k), mesh B 61201 cells (60k), mesh C 91083 cells (90k) and mesh D 126020 cells (120k). The simulation results were analyzed after 100 hours and each test was performed using different backends.

2.3.3 Results

Figure 2.7 shows the bed elevation profile at $y = 500$ m along the x -coordinates at the beginning and after 100 h of the simulation for the four different meshes (A, B, C and D) performed with double and single precision. The results are exactly the same for all processor types, except for the simulation performed with CUDA-single, where the values are slightly different due to the reduced precision.

Table 2.8 summarizes the results obtained from the numerical simulations at $t=100$ h for

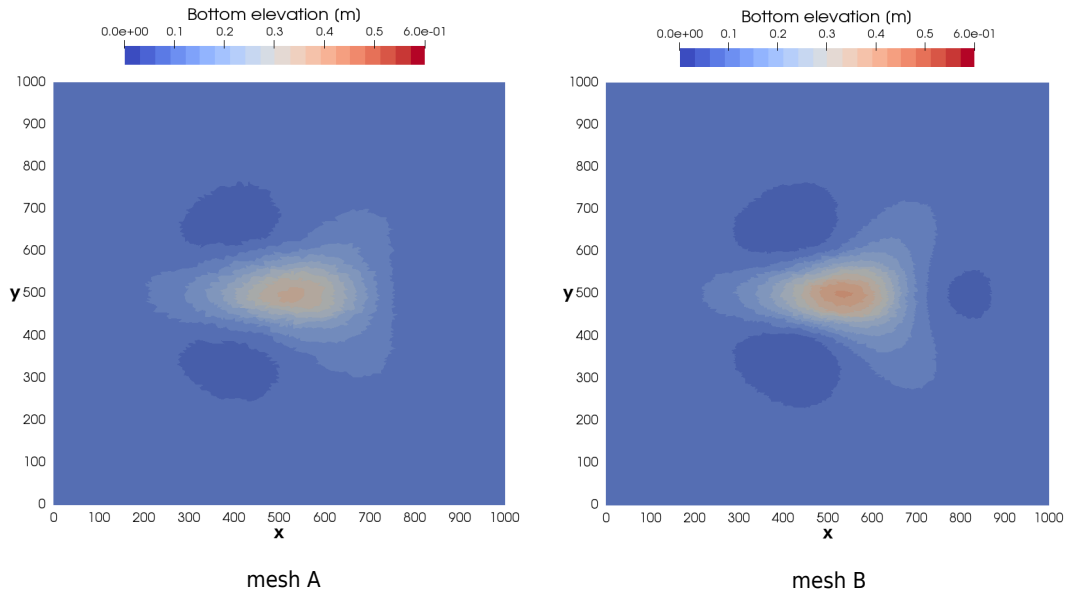


Figure 2.8 Planar view of the bottom elevation after 100 hours of simulation for the meshes A and B.

the different meshes using the backend types CPU and GPU-double. The spread angle α_s is measured between $y = 500$ m and the line passing through the initial conical dune center point and the farthest point in the x -direction where the conical dune spread for a similar bottom elevation (Figure 2.8 and Figure 2.9). The spread angle was measured at time $t=25h$, $50h$, $75h$ and $100h$ for each mesh size and the mean value is reported in Table 2.8. The accuracy of the simulations is assessed by the relative deviation between the measure spread angle α_s and the spread angle defined by de Vriend (1987) $\alpha_{s,ref}$.

Table 2.8 Summary of the simulation results performed with CPU and GPU double at $t=100h$ for different computational meshes

Mesh	Number of cells [-]	Max. cone elevation [m]	α_s [°]	Relative deviation [%]
A	30160	0.3327	25.57	16.0
B	61201	0.3950	25.12	14.2
C	91083	0.4279	23.94	9.4
D	126020	0.4518	23.35	6.9

The maximum bottom elevation after 100h increases with the mesh resolution while the spread angle decreases (Table 2.8). The results are more accurate for finer meshes (mesh C and mesh D, Figure 2.7), where less diffusive sediment transport is observed and thus the maximum bottom elevation after 100h is higher than for coarser meshes. This increase in accuracy for finer meshes is also observed in Figure 2.8 and Figure 2.9 by a well defined star shaped sediment transport and a spread angle that becomes closer to the value proposed by de Vriend (1987).

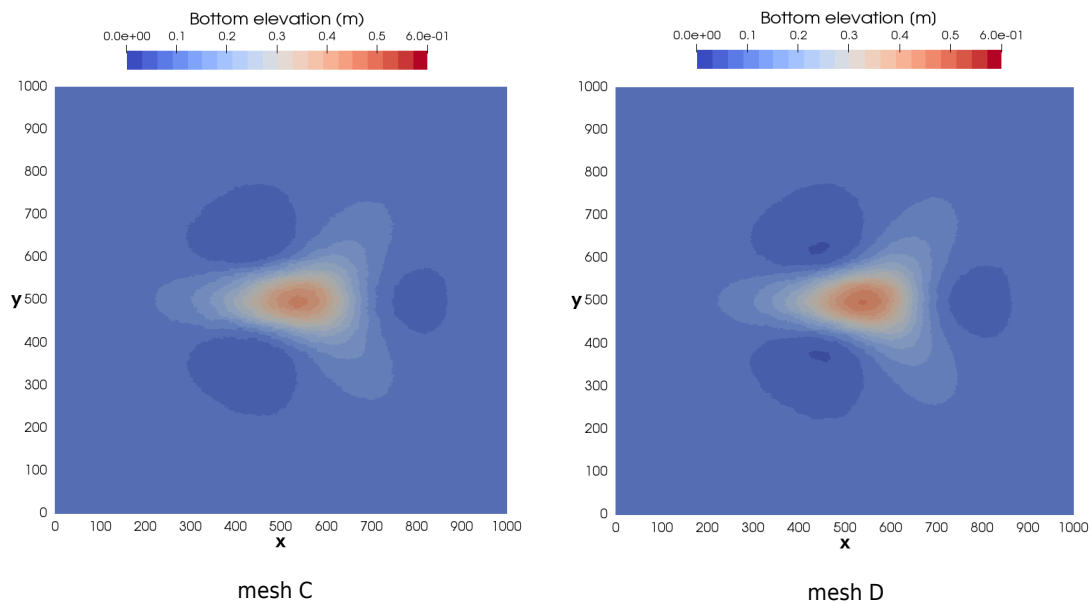


Figure 2.9 Planar view of the bottom elevation after 100 hours of simulation for the meshes C and D.

2.4 Dam-break flow in a L-shaped channel with a mobile-bed

2.4.1 Description

This test case is based on the experiments described in Palumbo et al. (2008) and is a frequently used benchmark test case in literature (e.g. Siviglia et al. (2013), Soares-Frazão and Zech (2011)).

2.4.2 Geometry and initial conditions

This test case consist of a domain with a non-symmetrical sudden enlargement. The dimensions of the domain as illustrated in Figure 2.10. The sediment bed is composed of coarse uniform sand with grain size diameter of $d_s = 1.82$ mm. The sediment porosity is $p = 0.47$ and the sediment density $\rho_s = 2680$ kg/m³. The Manning friction coefficient is set to $n = 0.0167$ s/m^{1/3}. The initial bed level is at an elevation of 0.1 m over the whole domain. The initial water depth upstream (left) of the dam is set to 0.25 m. The dam at is located at $x = 3.0$ m. At time $t = 0$ seconds, he dam is removed instantaneously, resulting in wave propagation and sediment transport.

The computational domain is discretised by unstructured triangular cells. Four different sized computational grids were generated, resulting in grids with 27,000 cells (27k), 54,000 cells (54k), 108,000 cells (108k), 216,000 cells (216k). Wall boundary conditions are applied at the domain side walls. At the outflow boundary (right), a free-outflow boundary condition was applied. The sediment transport is calculated using the MPM_like formula with a pre-factor of 3.97 and an exponent of 1.5. The simulation lasts 12 seconds.

2.4.3 Results

The simulated bed elevations at $t = 12$ s are compared to the experimental results from Palumbo et al. (2008) in Figure 2.11. Overall, the simulated bed elevations are in acceptable agreement with experimental data. The scour in cross section CS1 ($x = 4.1$ m) is matched well, while the deposition around $y = 0.3$ m is underestimated. At cross-section CS2, the numerical results correspond well with the experimental data. In particular at location CS1, the observed deviations may be attributed to distinct 3D flow effects that are not captured by the 2D depth-averaged model (Siviglia et al. 2013, Xia et al. 2010).

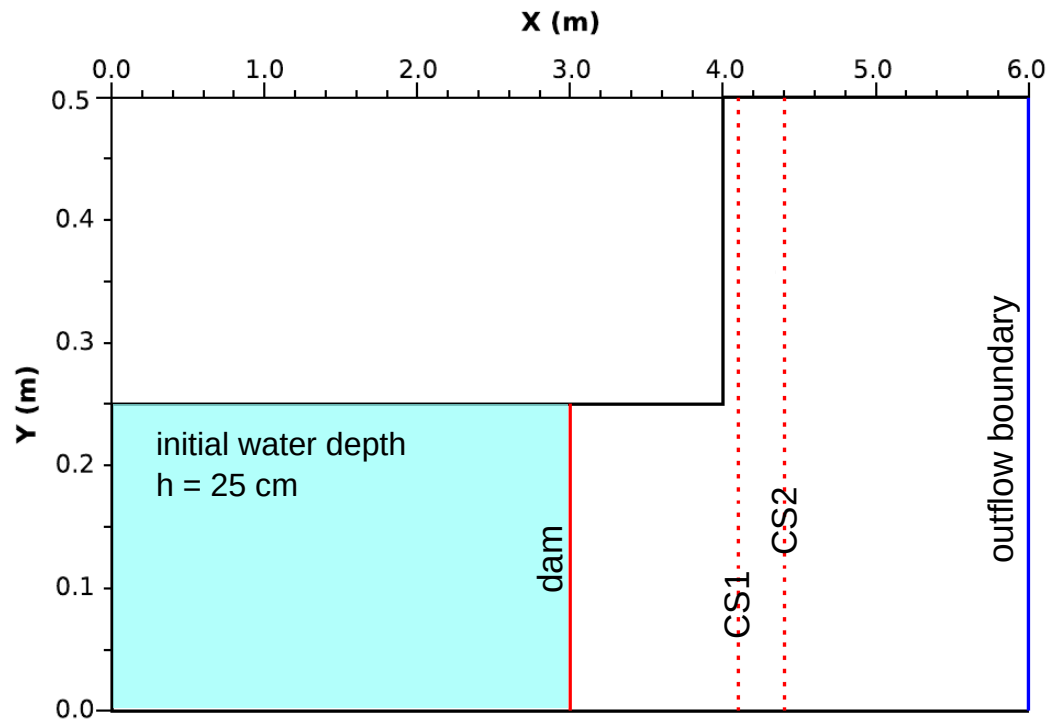


Figure 2.10 The numerical test setup for the dam-break flow in a L-shaped channel with a mobile-bed. Experimental and numerical bed elevations are compared along cross-sections CS1 and CS2. Modified from Siviglia et al. (2013).

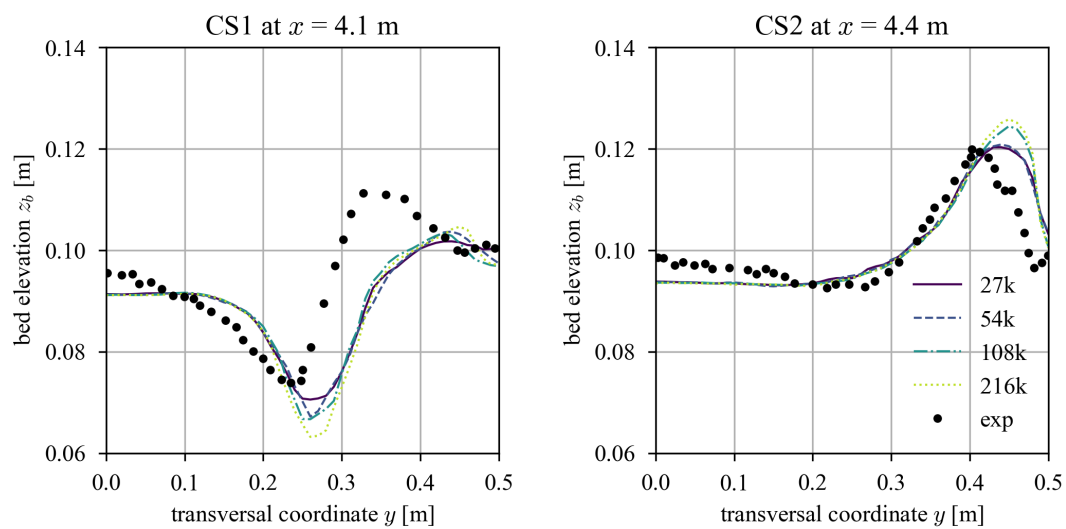


Figure 2.11 Experimental and numerical bed elevation are compared at cross-sections CS1 and CS2.

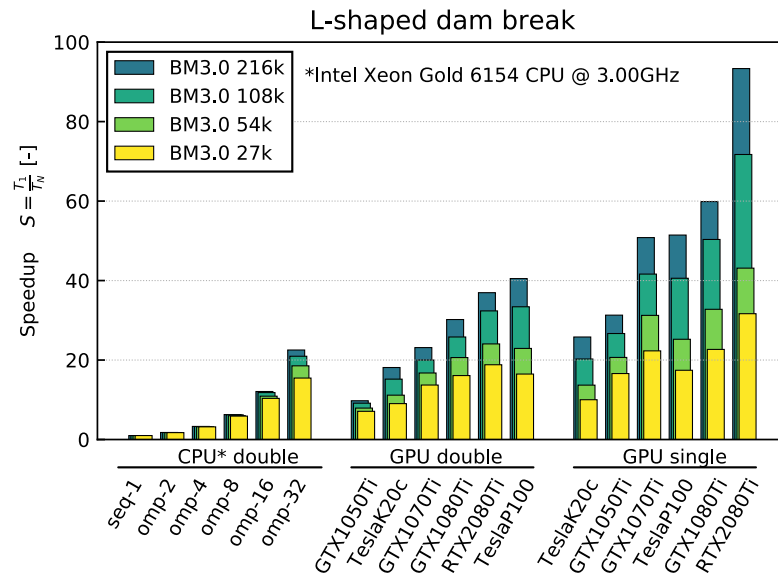


Figure 2.12 Speedup of the computational time $[T_N]$ for CPU (double) and GPU (single and double) compared to the time of the sequential backend Xeon1 $[T_1]$ for the L-shaped dam break test case.

2.4.4 Performance

2.4.4.1 Ubuntu

Simulations of this test case were performed on CPU- and GPU-backends. The largest execution times are obtained by using the sequential backend. By using the OpenMP-backend, the computation time can be reduced almost linearly with the number of cores. Also by using GPU-backends the computation time can be reduced in comparison to sequential computation, whereas the increase in performance depends on the GPU-card and the precision (single or double). The best performance using double precision is obtained with the card Tesla P100, while the RTX 2080Ti outperformed other cards when using single precision (see Tables 2.9, 2.10 and 2.11 or Figure 2.12). It should be noted that the results of simulations with single and double precision can vary greatly depending on the problem.

Table 2.9 Computational time (s) and speedup S (inside brackets) of the L-shaped dam break simulations for CPU simulations (Intel Xeon Gold 6154, 3.00GHz)

Mesh size	Xeon 1 Double	Xeon 2 Double	Xeon 4 Double	Xeon 8 Double	Xeon 16 Double	Xeon 32 Double
30k	43.8	25.2 (1.7x)	13.7 (3.2x)	7.4 (5.9x)	4.2 (10.4x)	2.8 (15.5x)
60k	97.7	56.1 (1.7x)	30.4 (3.2x)	16.3 (6.0x)	9.0 (10.9x)	5.3 (18.5x)

Mesh size	Xeon 1 Double	Xeon 2 Double	Xeon 4 Double	Xeon 8 Double	Xeon 16 Double	Xeon 32 Double
90k	357.3	202.7 (1.8x)	109.3 (3.3x)	57.5 (6.2x)	3.2 (11.8x)	17.0 (21.0x)
120k	1096.3	618.5 (1.8x)	332.6 (3.3x)	174.9 (6.3x)	90.7 (12.1x)	48.7 (22.5x)

Table 2.10 Computational time (s) and speedup S (inside brackets) of the L-shaped dam break simulations for GPU simulations

Mesh size	Xeon 1 Double	RTX 2080Ti Single	RTX 2080Ti Double	Tesla K20 Single	Tesla K20 Double	Tesla P100 Single	Tesla P100 Double
30k	43.8	1.4 (31.7x)	2.3 (18.8x)	4.4 (10.0x)	4.8 (9.0x)	2.5 (17.4x)	2.7 (16.5x)
60k	97.7	2.3 (43.1x)	4.1 (24.1)	7.1 (13.7x)	8.8 (11.2x)	3.9 (25.2x)	4.3 (22.9x)
90k	357.3	5.0 (71.7x)	11.0 (32.4x)	17.6 (20.3x)	23.5 (15.2x)	8.8 (40.6x)	10.7 (33.4x)
120k	1096.3	11.7 (93.3x)	29.7 (37.0x)	42.5 (25.8x)	60.5 (18.1x)	21.3 (51.4x)	27.1 (40.5x)

Table 2.11 Computational time (s) and speedup S (inside brackets) of the L-shaped dam break simulations for GPU simulations

Mesh size	Xeon 1 Double	GTX 1050 Single	GTX 1050 Double	GTX 1070 Single	GTX 1070 Double	GTX 1080 Single	GTX 1080 Double
30k	43.8	2.6 (16.6x)	6.2 (7.1x)	2.0 (22.3x)	3.2 (13.7x)	1.9 (22.7x)	2.7 (16.1x)
60k	97.7	4.7 (20.7x)	12.4 (7.9x)	3.1 (31.2x)	5.8 (16.7x)	3.0 (32.8x)	4.7 (20.69x)
90k	357.3	13.4 (26.7x)	39.1 (9.1x)	8.6 (41.6x)	17.9 (20.0x)	7.1 (50.3x)	13.8 (25.8x)
120k	1096.3	35.0 (31.3x)	112.4 (9.8x)	21.6 (50.8x)	47.4 (23.1x)	18.3 (59.9x)	36.3 (30.2x)

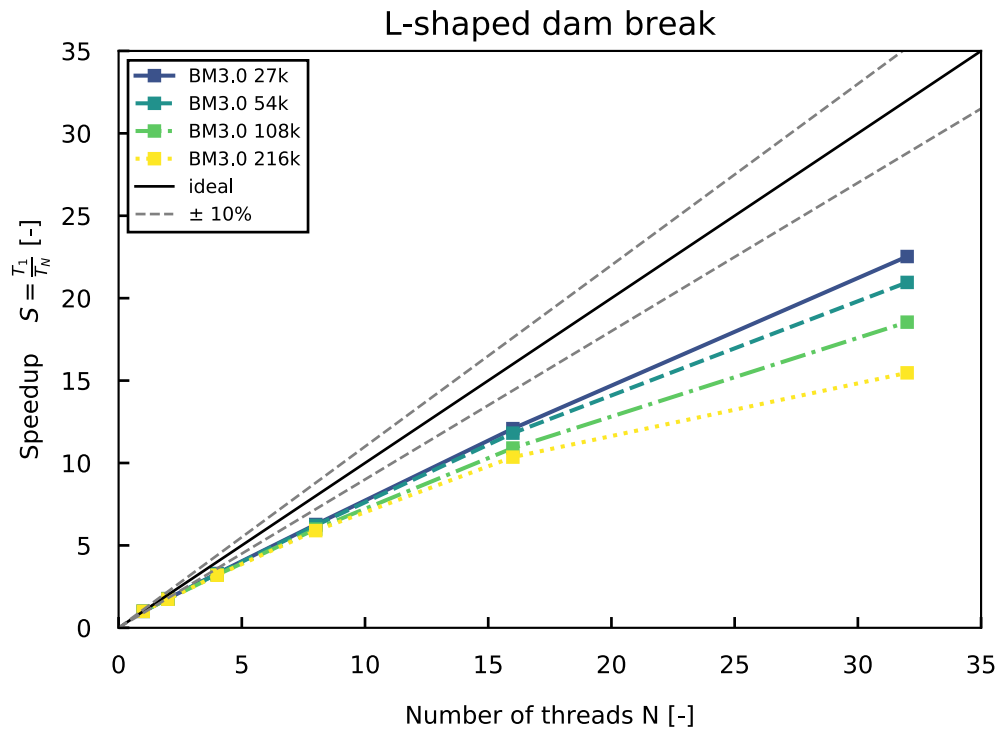


Figure 2.13 Speedup of the L-shaped dam break test case performed on CPU for an increasing number of threads and different mesh sizes

In Figure 2.13, the speedup of the OpenMP-backend is illustrated for different mesh sizes on an Intel Xeon Gold 6154 (3.00GHz) processor on an Ubuntu system with 36 cores. The speedup of scales almost linearly up to 32 cores for this test case, indicating a good scaling behaviour.

2.4.4.2 Windows

Tables 2.12 contains the execution time and speedup of the simulations performed on different backends under Windows. The simulations were run on Prozessor Intel Xeon E-2174G (3.80GHz) processors with 4 cores and 2 threads per core (8 logical cores using HyperThreading). The performance scales adequately up to 4 cores. The use of 8 logical usings (HyperThreading) does not results in a significant improvement of performance compared to using 4 physical cores.

Table 2.12 Computational time (s) and speedup (in parentheses) for CPU simulations of L-shaped dam break with a mobile bed under Windows 10 (Intel Xeon E-2174G, 3.80GHz)

Mesh size	Xeon 1 Double	Xeon 2 Double	Xeon 4 Double	Xeon 8 Double
27k	70.0	38.3 (1.83x)	25.6 (2.73x)	16.8 (4.18x)

Mesh size	Xeon 1 Double	Xeon 2 Double	Xeon 4 Double	Xeon 8 Double
54k	158.8	87.3 (1.82x)	58.1 (2.73x)	37.5 (4.23x)
108k	578.5	319.6 (1.81x)	212.3 (2.72x)	137.7 (4.20x)
216k	1770.6	986.0 (1.80x)	680.9 (2.60x)	427.8 (4.14x)

References

- de Vriend, H.J. (1987). 2DH mathematical modelling of morphological evolutions in shallow water. *Coastal engineering*, 11(1): 1–27.
- Hudson, J. and Sweby, P.K. (2005). A high-resolution scheme for the equations governing 2D bed-load sediment transport. *International Journal for Numerical Methods in Fluids*, 47: 1085–1091.
- Palumbo, A., Soares Frazao, S., Goutière, L., Pianese, D. and Zech, Y. (2008). Dam-break flow on mobile bed in a channel with a sudden enlargement. *Proceedings of the river flow 2008 conference*.
- Siviglia, A., Stecca, G., Vanzo, D., Zolezzi, G. and Toro, E.F. (2013). Numerical modelling of two-dimensional morphodynamics with applications to river bars and bifurcations. *Advances in Water Resources*, 52: 243–260.
- Soares-Frazão, S. and Zech, Y. (2011). HLLC scheme with novel wave-speed estimators appropriate for two-dimensional shallow-water flow on erodible bed. *International Journal for Numerical Methods in Fluids*, 66.
- Toro, E.F. (2001). Shock-Capturing Methods for Free-Surface Shallow Flows. *John Wiley*, Chichester, New York.
- Vanzo, D., Siviglia, A. and Toro, E.F. (2016). Pollutant transport by shallow water equations on unstructured meshes: Hyperbolization of the model and numerical solution via a novel flux splitting scheme. *Journal of Computational Physics*, 321: 1–20.

**BASIC SIMULATION ENVIRONMENT
FOR SIMULATION OF ENVIRONMENTAL FLOW
AND NATURAL HAZARD SIMULATION**

APPENDIX

**VERSION 3.2
May 2022**



BASEMENT

Third Party Software

1.1 Third party software copyright notices

Abseil

Copyright The Abseil Authors.

License: Apache 2.0

Brotli

Copyright (c) 2009, 2010, 2013-2016 by the Brotli Authors.

License: MIT

Bzip2

This program, "bzip2", the associated library "libbzip2", and all documentation, are copyright (C) 1996-2019 Julian R Seward. All rights reserved.

Redistribution and use in source and binary forms, with or without modification, are permitted provided that the following conditions are met:

1. Redistributions of source code must retain the above copyright notice, this list of conditions and the following disclaimer.
2. The origin of this software must not be misrepresented; you must not claim that you wrote the original software. If you use this software in a product, an acknowledgment in the product documentation would be appreciated but is not required.
3. Altered source versions must be plainly marked as such, and must not be misrepresented as being the original software.
4. The name of the author may not be used to endorse or promote products derived from this software without specific prior written permission.

THIS SOFTWARE IS PROVIDED BY THE AUTHOR ``AS IS'' AND ANY EXPRESS OR IMPLIED WARRANTIES, INCLUDING, BUT NOT LIMITED TO, THE IMPLIED WARRANTIES OF MERCHANTABILITY AND FITNESS FOR A PARTICULAR PURPOSE ARE DISCLAIMED. IN NO EVENT SHALL THE AUTHOR BE LIABLE FOR ANY DIRECT, INDIRECT, INCIDENTAL, SPECIAL, EXEMPLARY, OR CONSEQUENTIAL DAMAGES (INCLUDING, BUT NOT LIMITED TO, PROCUREMENT OF SUBSTITUTE GOODS OR SERVICES; LOSS OF USE, DATA, OR PROFITS; OR BUSINESS INTERRUPTION) HOWEVER CAUSED AND ON ANY THEORY OF LIABILITY, WHETHER IN CONTRACT, STRICT LIABILITY, OR TORT (INCLUDING NEGLIGENCE OR OTHERWISE) ARISING IN ANY WAY OUT OF THE USE OF THIS SOFTWARE, EVEN IF ADVISED OF THE POSSIBILITY OF SUCH DAMAGE.

Julian Seward, jseward@acm.org
bzip2/libbzip2 version 1.0.8 of 13 July 2019

Double-conversion

Copyright 2006-2011, the V8 project authors. All rights reserved.

License: BSD 2.0

Egl-registry

Copyright (c) 2008-2018 The Khronos Group Inc.
Copyright (c) 2013-2017 The Khronos Group Inc.
Copyright (c) 2013-2017 The Khronos Group Inc.
Copyright (c) 2007-2016 The Khronos Group Inc.

Permission is hereby granted, free of charge, to any person obtaining a copy of this software and/or associated documentation files (the "Materials"), to deal in the Materials without restriction, including without limitation the rights to use, copy, modify, merge, publish, distribute, sublicense, and/or sell copies of the Materials, and to permit persons to whom the Materials are furnished to do so, subject to the following conditions:

The above copyright notice and this permission notice shall be included in all copies or substantial portions of the Materials.

THE MATERIALS ARE PROVIDED "AS IS", WITHOUT WARRANTY OF ANY KIND, EXPRESS OR IMPLIED, INCLUDING BUT NOT LIMITED TO THE WARRANTIES OF MERCHANTABILITY, FITNESS FOR A PARTICULAR PURPOSE AND NONINFRINGEMENT. IN NO EVENT SHALL THE AUTHORS OR COPYRIGHT HOLDERS BE LIABLE FOR ANY CLAIM, DAMAGES OR OTHER LIABILITY, WHETHER IN AN ACTION OF CONTRACT, TORT OR OTHERWISE, ARISING FROM, OUT OF OR IN CONNECTION WITH THE MATERIALS OR THE USE OR OTHER DEALINGS IN THE MATERIALS.

Freetype

The FreeType 2 font engine is copyrighted work and cannot be used legally without a software license. In order to make this project usable to a vast majority of developers, we distribute it under two mutually exclusive open-source licenses.

This means that *you* must choose *one* of the two licenses described below, then obey all its terms and conditions when using FreeType 2 in any of your projects or products.

- The FreeType License, found in the file `FTL.TXT', which is similar to the original BSD license *with* an advertising clause that forces you to explicitly cite the FreeType project in your product's documentation. All details are in the license file. This license is suited to products which don't use the GNU General Public License.

Note that this license is compatible to the GNU General Public License version 3, but not version 2.

- The GNU General Public License version 2, found in `GPLv2.TXT' (any later version can be used also), for programs which already use the GPL. Note that the FTL is incompatible with GPLv2 due to its advertisement clause.

The contributed BDF and PCF drivers come with a license similar to that of the X Window System. It is compatible to the above two licenses (see file src/bdf/README and src/pcf/README). The same holds for the files `fthash.c' and `fthash.h'; their code was part of the BDF driver in earlier FreeType versions.

The gzip module uses the zlib license (see src/gzip/zlib.h) which too is compatible to the above two licenses.

The MD5 checksum support (only used for debugging in development builds) is in the public domain.

Glibc-queue

Copyright (C) 1991-2015 Free Software Foundation, Inc.

The GNU C Library is free software; you can redistribute it and/or modify it under the terms of the GNU Lesser General Public License as published by the Free Software Foundation; either version 2.1 of the License, or (at your option) any later version.

The GNU C Library is distributed in the hope that it will be useful, but WITHOUT ANY WARRANTY; without even the implied warranty of MERCHANTABILITY or FITNESS FOR A PARTICULAR PURPOSE. See the GNU Lesser General Public License for more details.

You should have received a copy of the GNU Lesser General Public License along with the GNU C Library; if not, write to the Free Software Foundation, Inc., 51 Franklin St, Fifth Floor, Boston, MA 02110-1301 USA

* All code incorporated from 4.4 BSD is distributed under the following license:

Copyright (C) 1991 Regents of the University of California.
All rights reserved.

Redistribution and use in source and binary forms, with or without modification, are permitted provided that the following conditions are met:

1. Redistributions of source code must retain the above copyright notice, this list of conditions and the following disclaimer.
2. Redistributions in binary form must reproduce the above copyright notice, this list of conditions and the following disclaimer in the documentation and/or other materials provided with the distribution.
3. [This condition was removed.]
4. Neither the name of the University nor the names of its contributors may be used to endorse or promote products derived from this software without specific prior written permission.

THIS SOFTWARE IS PROVIDED BY THE REGENTS AND CONTRIBUTORS ``AS IS'' AND ANY EXPRESS OR IMPLIED WARRANTIES, INCLUDING, BUT NOT LIMITED TO, THE IMPLIED WARRANTIES OF MERCHANTABILITY AND FITNESS FOR A PARTICULAR PURPOSE ARE DISCLAIMED. IN NO EVENT SHALL THE REGENTS OR CONTRIBUTORS BE LIABLE FOR ANY DIRECT, INDIRECT, INCIDENTAL, SPECIAL, EXEMPLARY, OR CONSEQUENTIAL DAMAGES (INCLUDING, BUT NOT LIMITED TO, PROCUREMENT OF SUBSTITUTE GOODS OR SERVICES; LOSS OF USE, DATA, OR PROFITS; OR BUSINESS INTERRUPTION) HOWEVER CAUSED AND ON ANY THEORY OF LIABILITY, WHETHER IN CONTRACT, STRICT LIABILITY, OR TORT (INCLUDING NEGLIGENCE OR OTHERWISE) ARISING IN ANY WAY OUT OF THE USE OF THIS SOFTWARE, EVEN IF ADVISED OF THE POSSIBILITY OF SUCH DAMAGE.

Google Test

Copyright 2008, Google Inc.

All rights reserved.

License: BSD 2.0

Harfbuzz

HarfBuzz is licensed under the so-called "Old MIT" license. Details follow.
For parts of HarfBuzz that are licensed under different licenses see individual
files names COPYING in subdirectories where applicable.

Copyright © 2010,2011,2012,2013,2014,2015,2016,2017,2018,2019,2020 Google, Inc.
Copyright © 2018,2019,2020 Ebrahim Byagowi
Copyright © 2019,2020 Facebook, Inc.
Copyright © 2012 Mozilla Foundation
Copyright © 2011 Codethink Limited
Copyright © 2008,2010 Nokia Corporation and/or its subsidiary(-ies)
Copyright © 2009 Keith Stribley
Copyright © 2009 Martin Hosken and SIL International
Copyright © 2007 Chris Wilson
Copyright © 2006 Behdad Esfahbod
Copyright © 2005 David Turner
Copyright © 2004,2007,2008,2009,2010 Red Hat, Inc.
Copyright © 1998-2004 David Turner and Werner Lemberg

For full copyright notices consult the individual files in the package.

Permission is hereby granted, without written agreement and without
license or royalty fees, to use, copy, modify, and distribute this
software and its documentation for any purpose, provided that the
above copyright notice and the following two paragraphs appear in
all copies of this software.

IN NO EVENT SHALL THE COPYRIGHT HOLDER BE LIABLE TO ANY PARTY FOR
DIRECT, INDIRECT, SPECIAL, INCIDENTAL, OR CONSEQUENTIAL DAMAGES
ARISING OUT OF THE USE OF THIS SOFTWARE AND ITS DOCUMENTATION, EVEN
IF THE COPYRIGHT HOLDER HAS BEEN ADVISED OF THE POSSIBILITY OF SUCH
DAMAGE.

THE COPYRIGHT HOLDER SPECIFICALLY DISCLAIMS ANY WARRANTIES, INCLUDING,
BUT NOT LIMITED TO, THE IMPLIED WARRANTIES OF MERCHANTABILITY AND
FITNESS FOR A PARTICULAR PURPOSE. THE SOFTWARE PROVIDED HEREUNDER IS
ON AN "AS IS" BASIS, AND THE COPYRIGHT HOLDER HAS NO OBLIGATION TO
PROVIDE MAINTENANCE, SUPPORT, UPDATES, ENHANCEMENTS, OR MODIFICATIONS.

HDF5

Copyright Notice and License Terms for
HDF5 (Hierarchical Data Format 5) Software Library and Utilities

HDF5 (Hierarchical Data Format 5) Software Library and Utilities
Copyright 2006 by The HDF Group.

NCSA HDF5 (Hierarchical Data Format 5) Software Library and Utilities
Copyright 1998-2006 by The Board of Trustees of the University of Illinois.

All rights reserved.

Redistribution and use in source and binary forms, with or without
modification, are permitted for any purpose (including commercial purposes)
provided that the following conditions are met:

1. Redistributions of source code must retain the above copyright notice, this list of conditions, and the following disclaimer.
2. Redistributions in binary form must reproduce the above copyright notice, this list of conditions, and the following disclaimer in the documentation and/or materials provided with the distribution.
3. Neither the name of The HDF Group, the name of the University, nor the name of any Contributor may be used to endorse or promote products derived from this software without specific prior written permission from The HDF Group, the University, or the Contributor, respectively.

DISCLAIMER:

THIS SOFTWARE IS PROVIDED BY THE HDF GROUP AND THE CONTRIBUTORS "AS IS" WITH NO WARRANTY OF ANY KIND, EITHER EXPRESSED OR IMPLIED. IN NO EVENT SHALL THE HDF GROUP OR THE CONTRIBUTORS BE LIABLE FOR ANY DAMAGES SUFFERED BY THE USERS ARISING OUT OF THE USE OF THIS SOFTWARE, EVEN IF ADVISED OF THE POSSIBILITY OF SUCH DAMAGE.

You are under no obligation whatsoever to provide any bug fixes, patches, or upgrades to the features, functionality or performance of the source code ("Enhancements") to anyone; however, if you choose to make your Enhancements available either publicly, or directly to The HDF Group, without imposing a separate written license agreement for such Enhancements, then you hereby grant the following license: a non-exclusive, royalty-free perpetual license to install, use, modify, prepare derivative works, incorporate into other computer software, distribute, and sublicense such enhancements or derivative works thereof, in binary and source code form.

 Limited portions of HDF5 were developed by Lawrence Berkeley National Laboratory (LBNL). LBNL's Copyright Notice and Licensing Terms can be found here: COPYING_LBNL_HDF5 file in this directory or at http://support.hdfgroup.org/ftp/HDF5/releases/COPYING_LBNL_HDF5.

 Contributors: National Center for Supercomputing Applications (NCSA) at the University of Illinois, Fortner Software, Unidata Program Center (netCDF), The Independent JPEG Group (JPEG), Jean-loup Gailly and Mark Adler (gzip), and Digital Equipment Corporation (DEC).

 Portions of HDF5 were developed with support from the Lawrence Berkeley National Laboratory (LBNL) and the United States Department of Energy under Prime Contract No. DE-AC02-05CH11231.

 Portions of HDF5 were developed with support from the University of California, Lawrence Livermore National Laboratory (UC LLNL). The following statement applies to those portions of the product and must be retained in any redistribution of source code, binaries, documentation, and/or accompanying materials:

This work was partially produced at the University of California, Lawrence Livermore National Laboratory (UC LLNL) under contract no. W-7405-ENG-48 (Contract 48) between the U.S. Department of Energy (DOE) and The Regents of the University of California (University) for the operation of UC LLNL.

DISCLAIMER:

THIS WORK WAS PREPARED AS AN ACCOUNT OF WORK SPONSORED BY AN AGENCY OF THE UNITED STATES GOVERNMENT. NEITHER THE UNITED STATES GOVERNMENT NOR THE UNIVERSITY OF CALIFORNIA NOR ANY OF THEIR EMPLOYEES, MAKES ANY

WARRANTY, EXPRESS OR IMPLIED, OR ASSUMES ANY LIABILITY OR RESPONSIBILITY FOR THE ACCURACY, COMPLETENESS, OR USEFULNESS OF ANY INFORMATION, APPARATUS, PRODUCT, OR PROCESS DISCLOSED, OR REPRESENTS THAT ITS USE WOULD NOT INFRINGE PRIVATELY- OWNED RIGHTS. REFERENCE HEREIN TO ANY SPECIFIC COMMERCIAL PRODUCTS, PROCESS, OR SERVICE BY TRADE NAME, TRADEMARK, MANUFACTURER, OR OTHERWISE, DOES NOT NECESSARILY CONSTITUTE OR IMPLY ITS ENDORSEMENT, RECOMMENDATION, OR FAVORING BY THE UNITED STATES GOVERNMENT OR THE UNIVERSITY OF CALIFORNIA. THE VIEWS AND OPINIONS OF AUTHORS EXPRESSED HEREIN DO NOT NECESSARILY STATE OR REFLECT THOSE OF THE UNITED STATES GOVERNMENT OR THE UNIVERSITY OF CALIFORNIA, AND SHALL NOT BE USED FOR ADVERTISING OR PRODUCT ENDORSEMENT PURPOSES.

HDF5 is available with the SZIP compression library but SZIP is not part of HDF5 and has separate copyright and license terms. See SZIP Compression in HDF Products (www.hdfgroup.org/doc_resource/SZIP/) for further details.

HighFive

License: BSL 1.0

JSON for Modern C++

Copyright (c) 2013-2020 Niels Lohmann

License: MIT

Libjpeg-turbo

libjpeg-turbo Licenses

=====

libjpeg-turbo is covered by three compatible BSD-style open source licenses:

- The IJG (Independent JPEG Group) License, which is listed in README.ijg

This license applies to the libjpeg API library and associated programs (any code inherited from libjpeg, and any modifications to that code.)

- The Modified (3-clause) BSD License, which is listed below

This license covers the TurboJPEG API library and associated programs, as well as the build system.

- The [zlib License](<https://opensource.org/licenses/Zlib>)

This license is a subset of the other two, and it covers the libjpeg-turbo SIMD extensions.

Complying with the libjpeg-turbo Licenses

=====

This section provides a roll-up of the libjpeg-turbo licensing terms, to the best of our understanding.

1. If you are distributing a modified version of the libjpeg-turbo source, then:
 1. You cannot alter or remove any existing copyright or license notices from the source.

- ```

Origin
- Clause 1 of the IJG License
- Clause 1 of the Modified BSD License
- Clauses 1 and 3 of the zlib License

```
2. You must add your own copyright notice to the header of each source file you modified, so others can tell that you modified that file (if there is not an existing copyright header in that file, then you can simply add a notice stating that you modified the file.)

```

Origin
- Clause 1 of the IJG License
- Clause 2 of the zlib License

```
  3. You must include the IJG README file, and you must not alter any of the copyright or license text in that file.

```

Origin
- Clause 1 of the IJG License

```
2. If you are distributing only libjpeg-turbo binaries without the source, or if you are distributing an application that statically links with libjpeg-turbo, then:
    1. Your product documentation must include a message stating:

This software is based in part on the work of the Independent JPEG Group.

```

Origin
- Clause 2 of the IJG license

```
    2. If your binary distribution includes or uses the TurboJPEG API, then your product documentation must include the text of the Modified BSD License (see below.)

```

Origin
- Clause 2 of the Modified BSD License

```
  3. You cannot use the name of the IJG or The libjpeg-turbo Project or the contributors thereof in advertising, publicity, etc.

```

Origin
- IJG License
- Clause 3 of the Modified BSD License

```
  4. The IJG and The libjpeg-turbo Project do not warrant libjpeg-turbo to be free of defects, nor do we accept any liability for undesirable consequences resulting from your use of the software.

```

Origin
- IJG License
- Modified BSD License
- zlib License

```

The Modified (3-clause) BSD License  
=====

Copyright (C)2009-2020 D. R. Commander. All Rights Reserved.  
Copyright (C)2015 Viktor Szathm ry. All Rights Reserved.

Redistribution and use in source and binary forms, with or without modification, are permitted provided that the following conditions are met:

- Redistributions of source code must retain the above copyright notice, this list of conditions and the following disclaimer.
- Redistributions in binary form must reproduce the above copyright notice, this list of conditions and the following disclaimer in the documentation and/or other materials provided with the distribution.

- Neither the name of the libjpeg-turbo Project nor the names of its contributors may be used to endorse or promote products derived from this software without specific prior written permission.

THIS SOFTWARE IS PROVIDED BY THE COPYRIGHT HOLDERS AND CONTRIBUTORS "AS IS", AND ANY EXPRESS OR IMPLIED WARRANTIES, INCLUDING, BUT NOT LIMITED TO, THE IMPLIED WARRANTIES OF MERCHANTABILITY AND FITNESS FOR A PARTICULAR PURPOSE ARE DISCLAIMED. IN NO EVENT SHALL THE COPYRIGHT HOLDERS OR CONTRIBUTORS BE LIABLE FOR ANY DIRECT, INDIRECT, INCIDENTAL, SPECIAL, EXEMPLARY, OR CONSEQUENTIAL DAMAGES (INCLUDING, BUT NOT LIMITED TO, PROCUREMENT OF SUBSTITUTE GOODS OR SERVICES; LOSS OF USE, DATA, OR PROFITS; OR BUSINESS INTERRUPTION) HOWEVER CAUSED AND ON ANY THEORY OF LIABILITY, WHETHER IN CONTRACT, STRICT LIABILITY, OR TORT (INCLUDING NEGLIGENCE OR OTHERWISE) ARISING IN ANY WAY OUT OF THE USE OF THIS SOFTWARE, EVEN IF ADVISED OF THE POSSIBILITY OF SUCH DAMAGE.

Why Three Licenses?

=====

The zlib License could have been used instead of the Modified (3-clause) BSD License, and since the IJG License effectively subsumes the distribution conditions of the zlib License, this would have effectively placed libjpeg-turbo binary distributions under the IJG License. However, the IJG License specifically refers to the Independent JPEG Group and does not extend attribution and endorsement protections to other entities. Thus, it was desirable to choose a license that granted us the same protections for new code that were granted to the IJG for code derived from their software.

## Libpng

COPYRIGHT NOTICE, DISCLAIMER, and LICENSE

=====

PNG Reference Library License version 2

-----

- \* Copyright (c) 1995-2019 The PNG Reference Library Authors.
- \* Copyright (c) 2018-2019 Cosmin Truta.
- \* Copyright (c) 2000-2002, 2004, 2006-2018 Glenn Randers-Pehrson.
- \* Copyright (c) 1996-1997 Andreas Dilger.
- \* Copyright (c) 1995-1996 Guy Eric Schalnat, Group 42, Inc.

The software is supplied "as is", without warranty of any kind, express or implied, including, without limitation, the warranties of merchantability, fitness for a particular purpose, title, and non-infringement. In no event shall the Copyright owners, or anyone distributing the software, be liable for any damages or other liability, whether in contract, tort or otherwise, arising from, out of, or in connection with the software, or the use or other dealings in the software, even if advised of the possibility of such damage.

Permission is hereby granted to use, copy, modify, and distribute this software, or portions hereof, for any purpose, without fee, subject to the following restrictions:

1. The origin of this software must not be misrepresented; you must not claim that you wrote the original software. If you use this software in a product, an acknowledgment in the product documentation would be appreciated, but is not required.
2. Altered source versions must be plainly marked as such, and must not be misrepresented as being the original software.
3. This Copyright notice may not be removed or altered from any source or altered source distribution.

PNG Reference Library License version 1 (for libpng 0.5 through 1.6.35)

-----

libpng versions 1.0.7, July 1, 2000, through 1.6.35, July 15, 2018 are Copyright (c) 2000-2002, 2004, 2006-2018 Glenn Randers-Pehrson, are derived from libpng-1.0.6, and are distributed according to the same disclaimer and license as libpng-1.0.6 with the following individuals added to the list of Contributing Authors:

Simon-Pierre Cadieux  
 Eric S. Raymond  
 Mans Rullgard  
 Cosmin Truta  
 Gilles Vollant  
 James Yu  
 Mandar Sahastrabuddhe  
 Google Inc.  
 Vadim Barkov

and with the following additions to the disclaimer:

There is no warranty against interference with your enjoyment of the library or against infringement. There is no warranty that our efforts or the library will fulfill any of your particular purposes or needs. This library is provided with all faults, and the entire risk of satisfactory quality, performance, accuracy, and effort is with the user.

Some files in the "contrib" directory and some configure-generated files that are distributed with libpng have other copyright owners, and are released under other open source licenses.

libpng versions 0.97, January 1998, through 1.0.6, March 20, 2000, are Copyright (c) 1998-2000 Glenn Randers-Pehrson, are derived from libpng-0.96, and are distributed according to the same disclaimer and license as libpng-0.96, with the following individuals added to the list of Contributing Authors:

Tom Lane  
 Glenn Randers-Pehrson  
 Willem van Schaik

libpng versions 0.89, June 1996, through 0.96, May 1997, are Copyright (c) 1996-1997 Andreas Dilger, are derived from libpng-0.88, and are distributed according to the same disclaimer and license as libpng-0.88, with the following individuals added to the list of Contributing Authors:

John Bowler  
 Kevin Bracey  
 Sam Bushell  
 Magnus Holmgren  
 Greg Roelofs  
 Tom Tanner

Some files in the "scripts" directory have other copyright owners, but are released under this license.

libpng versions 0.5, May 1995, through 0.88, January 1996, are Copyright (c) 1995-1996 Guy Eric Schalnat, Group 42, Inc.

For the purposes of this copyright and license, "Contributing Authors" is defined as the following set of individuals:

Andreas Dilger  
 Dave Martindale  
 Guy Eric Schalnat  
 Paul Schmidt  
 Tim Wegner

The PNG Reference Library is supplied "AS IS". The Contributing Authors and Group 42, Inc. disclaim all warranties, expressed or implied, including, without limitation, the warranties of merchantability and of fitness for any purpose. The Contributing Authors and Group 42, Inc. assume no liability for direct, indirect, incidental, special, exemplary, or consequential damages, which may result from the use of the PNG Reference Library, even if advised of the possibility of such damage.

Permission is hereby granted to use, copy, modify, and distribute this source code, or portions hereof, for any purpose, without fee, subject to the following restrictions:

1. The origin of this source code must not be misrepresented.
2. Altered versions must be plainly marked as such and must not be misrepresented as being the original source.
3. This Copyright notice may not be removed or altered from any source or altered source distribution.

The Contributing Authors and Group 42, Inc. specifically permit, without fee, and encourage the use of this source code as a component to supporting the PNG file format in commercial products. If you use this source code in a product, acknowledgment is not required but would be appreciated.

## OP2

Copyright (c) 2011, Gihan Mudalige, Istvan Reguly, Mike Giles, and others. Please see the AUTHORS file in the main source directory for details. All rights reserved.

License: BSD 2.0

## OpenMesh

Copyright (c) 2001-2015, RWTH-Aachen University

Department of Computer Graphics and Multimedia

All rights reserved.

[www.openmesh.org](http://www.openmesh.org)

License: BSD 2.0

## PCRE2

### PCRE2 LICENCE

-----

PCRE2 is a library of functions to support regular expressions whose syntax and semantics are as close as possible to those of the Perl 5 language.

Releases 10.00 and above of PCRE2 are distributed under the terms of the "BSD" licence, as specified below, with one exemption for certain binary redistributions. The documentation for PCRE2, supplied in the "doc" directory, is distributed under the same terms as the software itself. The data in the testdata directory is not copyrighted and is in the public domain.

The basic library functions are written in C and are freestanding. Also included in the distribution is a just-in-time compiler that can be used to optimize pattern matching. This is an optional feature that can be omitted when the library is built.

THE BASIC LIBRARY FUNCTIONS  
-----

Written by: Philip Hazel  
Email local part: ph10  
Email domain: cam.ac.uk

University of Cambridge Computing Service,  
Cambridge, England.

Copyright (c) 1997-2020 University of Cambridge  
All rights reserved.

PCRE2 JUST-IN-TIME COMPILATION SUPPORT  
-----

Written by: Zoltan Herczeg  
Email local part: hzmester  
Email domain: freemail.hu

Copyright(c) 2010-2020 Zoltan Herczeg  
All rights reserved.

STACK-LESS JUST-IN-TIME COMPILER  
-----

Written by: Zoltan Herczeg  
Email local part: hzmester  
Email domain: freemail.hu

Copyright(c) 2009-2020 Zoltan Herczeg  
All rights reserved.

THE "BSD" LICENCE  
-----

Redistribution and use in source and binary forms, with or without  
modification, are permitted provided that the following conditions are met:

- \* Redistributions of source code must retain the above copyright notices,  
this list of conditions and the following disclaimer.
- \* Redistributions in binary form must reproduce the above copyright  
notices, this list of conditions and the following disclaimer in the  
documentation and/or other materials provided with the distribution.
- \* Neither the name of the University of Cambridge nor the names of any  
contributors may be used to endorse or promote products derived from this  
software without specific prior written permission.

THIS SOFTWARE IS PROVIDED BY THE COPYRIGHT HOLDERS AND CONTRIBUTORS "AS IS"  
AND ANY EXPRESS OR IMPLIED WARRANTIES, INCLUDING, BUT NOT LIMITED TO, THE  
IMPLIED WARRANTIES OF MERCHANTABILITY AND FITNESS FOR A PARTICULAR PURPOSE  
ARE DISCLAIMED. IN NO EVENT SHALL THE COPYRIGHT OWNER OR CONTRIBUTORS BE  
LIABLE FOR ANY DIRECT, INDIRECT, INCIDENTAL, SPECIAL, EXEMPLARY, OR  
CONSEQUENTIAL DAMAGES (INCLUDING, BUT NOT LIMITED TO, PROCUREMENT OF  
SUBSTITUTE GOODS OR SERVICES; LOSS OF USE, DATA, OR PROFITS; OR BUSINESS  
INTERRUPTION) HOWEVER CAUSED AND ON ANY THEORY OF LIABILITY, WHETHER IN  
CONTRACT, STRICT LIABILITY, OR TORT (INCLUDING NEGLIGENCE OR OTHERWISE)  
ARISING IN ANY WAY OUT OF THE USE OF THIS SOFTWARE, EVEN IF ADVISED OF THE  
POSSIBILITY OF SUCH DAMAGE.

EXEMPTION FOR BINARY LIBRARY-LIKE PACKAGES  
-----

The second condition in the BSD licence (covering binary redistributions) does not apply all the way down a chain of software. If binary package A includes PCRE2, it must respect the condition, but if package B is software that includes package A, the condition is not imposed on package B unless it uses PCRE2 independently.

### Qt

The Qt Toolkit is Copyright (C) 2016 The Qt Company Ltd.  
Contact: <http://www.qt.io/licensing/>

License: LGPL 3.0

### SimpleXdmf

Copyright (c) 2017 hsimyu

License: MIT

### TCLAP

Copyright (c) 2003 Michael E. Smoot  
Copyright (c) 2004 Daniel Aarno  
Copyright (c) 2017 Google Inc.

License: MIT

### Vcpkg

Copyright (c) Microsoft Corporation

All rights reserved.

License: MIT

### Zlib

Copyright (C) 1995-2017 Jean-loup Gailly and Mark Adler

This software is provided 'as-is', without any express or implied warranty. In no event will the authors be held liable for any damages arising from the use of this software.

Permission is granted to anyone to use this software for any purpose, including commercial applications, and to alter it and redistribute it freely, subject to the following restrictions:

1. The origin of this software must not be misrepresented; you must not claim that you wrote the original software. If you use this software in a product, an acknowledgment in the product documentation would be appreciated but is not required.
2. Altered source versions must be plainly marked as such, and must not be misrepresented as being the original software.
3. This notice may not be removed or altered from any source distribution.

Jean-loup Gailly                      Mark Adler  
jloup@gzip.org                        madler@alumni.caltech.edu

### Zstd

Copyright (c) 2016-present, Facebook, Inc. All rights reserved.

License: BSD 2.0

## 1.2 Third party software licenses

### LGPL 3.0

GNU LESSER GENERAL PUBLIC LICENSE  
Version 3, 29 June 2007

Copyright (C) 2007 Free Software Foundation, Inc. <<https://fsf.org/>>  
Everyone is permitted to copy and distribute verbatim copies  
of this license document, but changing it is not allowed.

This version of the GNU Lesser General Public License incorporates  
the terms and conditions of version 3 of the GNU General Public  
License, supplemented by the additional permissions listed below.

#### 0. Additional Definitions.

As used herein, "this License" refers to version 3 of the GNU Lesser  
General Public License, and the "GNU GPL" refers to version 3 of the GNU  
General Public License.

"The Library" refers to a covered work governed by this License,  
other than an Application or a Combined Work as defined below.

An "Application" is any work that makes use of an interface provided  
by the Library, but which is not otherwise based on the Library.  
Defining a subclass of a class defined by the Library is deemed a mode  
of using an interface provided by the Library.

A "Combined Work" is a work produced by combining or linking an  
Application with the Library. The particular version of the Library  
with which the Combined Work was made is also called the "Linked  
Version".

The "Minimal Corresponding Source" for a Combined Work means the  
Corresponding Source for the Combined Work, excluding any source code  
for portions of the Combined Work that, considered in isolation, are  
based on the Application, and not on the Linked Version.

The "Corresponding Application Code" for a Combined Work means the  
object code and/or source code for the Application, including any data  
and utility programs needed for reproducing the Combined Work from the  
Application, but excluding the System Libraries of the Combined Work.

#### 1. Exception to Section 3 of the GNU GPL.

You may convey a covered work under sections 3 and 4 of this License  
without being bound by section 3 of the GNU GPL.

#### 2. Conveying Modified Versions.

If you modify a copy of the Library, and, in your modifications, a  
facility refers to a function or data to be supplied by an Application  
that uses the facility (other than as an argument passed when the  
facility is invoked), then you may convey a copy of the modified  
version:

- a) under this License, provided that you make a good faith effort to  
ensure that, in the event an Application does not supply the  
function or data, the facility still operates, and performs  
whatever part of its purpose remains meaningful, or
- b) under the GNU GPL, with none of the additional permissions of  
this License applicable to that copy.

#### 3. Object Code Incorporating Material from Library Header Files.

The object code form of an Application may incorporate material from



a header file that is part of the Library. You may convey such object code under terms of your choice, provided that, if the incorporated material is not limited to numerical parameters, data structure layouts and accessors, or small macros, inline functions and templates (ten or fewer lines in length), you do both of the following:

- a) Give prominent notice with each copy of the object code that the Library is used in it and that the Library and its use are covered by this License.
- b) Accompany the object code with a copy of the GNU GPL and this license document.

#### 4. Combined Works.

You may convey a Combined Work under terms of your choice that, taken together, effectively do not restrict modification of the portions of the Library contained in the Combined Work and reverse engineering for debugging such modifications, if you also do each of the following:

- a) Give prominent notice with each copy of the Combined Work that the Library is used in it and that the Library and its use are covered by this License.
- b) Accompany the Combined Work with a copy of the GNU GPL and this license document.
- c) For a Combined Work that displays copyright notices during execution, include the copyright notice for the Library among these notices, as well as a reference directing the user to the copies of the GNU GPL and this license document.

d) Do one of the following:

0) Convey the Minimal Corresponding Source under the terms of this License, and the Corresponding Application Code in a form suitable for, and under terms that permit, the user to recombine or relink the Application with a modified version of the Linked Version to produce a modified Combined Work, in the manner specified by section 6 of the GNU GPL for conveying Corresponding Source.

1) Use a suitable shared library mechanism for linking with the Library. A suitable mechanism is one that (a) uses at run time a copy of the Library already present on the user's computer system, and (b) will operate properly with a modified version of the Library that is interface-compatible with the Linked Version.

e) Provide Installation Information, but only if you would otherwise be required to provide such information under section 6 of the GNU GPL, and only to the extent that such information is necessary to install and execute a modified version of the Combined Work produced by recombining or relinking the Application with a modified version of the Linked Version. (If you use option 4d0, the Installation Information must accompany the Minimal Corresponding Source and Corresponding Application Code. If you use option 4d1, you must provide the Installation Information in the manner specified by section 6 of the GNU GPL for conveying Corresponding Source.)

#### 5. Combined Libraries.

You may place library facilities that are a work based on the Library side by side in a single library together with other library facilities that are not Applications and are not covered by this License, and convey such a combined library under terms of your choice, if you do both of the following:

a) Accompany the combined library with a copy of the same work based on the Library, uncombined with any other library facilities, conveyed under the terms of this License.

b) Give prominent notice with the combined library that part of it is a work based on the Library, and explaining where to find the accompanying uncombined form of the same work.

#### 6. Revised Versions of the GNU Lesser General Public License.

The Free Software Foundation may publish revised and/or new versions of the GNU Lesser General Public License from time to time. Such new versions will be similar in spirit to the present version, but may differ in detail to address new problems or concerns.

Each version is given a distinguishing version number. If the Library as you received it specifies that a certain numbered version of the GNU Lesser General Public License "or any later version" applies to it, you have the option of following the terms and conditions either of that published version or of any later version published by the Free Software Foundation. If the Library as you received it does not specify a version number of the GNU Lesser General Public License, you may choose any version of the GNU Lesser General Public License ever published by the Free Software Foundation.

If the Library as you received it specifies that a proxy can decide whether future versions of the GNU Lesser General Public License shall apply, that proxy's public statement of acceptance of any version is permanent authorization for you to choose that version for the Library.

### GPL 3.0

GNU GENERAL PUBLIC LICENSE  
Version 3, 29 June 2007

Copyright (C) 2007 Free Software Foundation, Inc. <<https://fsf.org/>>  
Everyone is permitted to copy and distribute verbatim copies of this license document, but changing it is not allowed.

#### Preamble

The GNU General Public License is a free, copyleft license for software and other kinds of works.

The licenses for most software and other practical works are designed to take away your freedom to share and change the works. By contrast, the GNU General Public License is intended to guarantee your freedom to share and change all versions of a program--to make sure it remains free software for all its users. We, the Free Software Foundation, use the GNU General Public License for most of our software; it applies also to any other work released this way by its authors. You can apply it to your programs, too.

When we speak of free software, we are referring to freedom, not price. Our General Public Licenses are designed to make sure that you have the freedom to distribute copies of free software (and charge for them if you wish), that you receive source code or can get it if you want it, that you can change the software or use pieces of it in new free programs, and that you know you can do these things.

To protect your rights, we need to prevent others from denying you these rights or asking you to surrender the rights. Therefore, you have certain responsibilities if you distribute copies of the software, or if you modify it: responsibilities to respect the freedom of others.

For example, if you distribute copies of such a program, whether gratis or for a fee, you must pass on to the recipients the same freedoms that you received. You must make sure that they, too, receive

or can get the source code. And you must show them these terms so they know their rights.

Developers that use the GNU GPL protect your rights with two steps: (1) assert copyright on the software, and (2) offer you this License giving you legal permission to copy, distribute and/or modify it.

For the developers' and authors' protection, the GPL clearly explains that there is no warranty for this free software. For both users' and authors' sake, the GPL requires that modified versions be marked as changed, so that their problems will not be attributed erroneously to authors of previous versions.

Some devices are designed to deny users access to install or run modified versions of the software inside them, although the manufacturer can do so. This is fundamentally incompatible with the aim of protecting users' freedom to change the software. The systematic pattern of such abuse occurs in the area of products for individuals to use, which is precisely where it is most unacceptable. Therefore, we have designed this version of the GPL to prohibit the practice for those products. If such problems arise substantially in other domains, we stand ready to extend this provision to those domains in future versions of the GPL, as needed to protect the freedom of users.

Finally, every program is threatened constantly by software patents. States should not allow patents to restrict development and use of software on general-purpose computers, but in those that do, we wish to avoid the special danger that patents applied to a free program could make it effectively proprietary. To prevent this, the GPL assures that patents cannot be used to render the program non-free.

The precise terms and conditions for copying, distribution and modification follow.

#### TERMS AND CONDITIONS

##### 0. Definitions.

"This License" refers to version 3 of the GNU General Public License.

"Copyright" also means copyright-like laws that apply to other kinds of works, such as semiconductor masks.

"The Program" refers to any copyrightable work licensed under this License. Each licensee is addressed as "you". "Licensees" and "recipients" may be individuals or organizations.

To "modify" a work means to copy from or adapt all or part of the work in a fashion requiring copyright permission, other than the making of an exact copy. The resulting work is called a "modified version" of the earlier work or a work "based on" the earlier work.

A "covered work" means either the unmodified Program or a work based on the Program.

To "propagate" a work means to do anything with it that, without permission, would make you directly or secondarily liable for infringement under applicable copyright law, except executing it on a computer or modifying a private copy. Propagation includes copying, distribution (with or without modification), making available to the public, and in some countries other activities as well.

To "convey" a work means any kind of propagation that enables other parties to make or receive copies. Mere interaction with a user through a computer network, with no transfer of a copy, is not conveying.

An interactive user interface displays "Appropriate Legal Notices" to the extent that it includes a convenient and prominently visible feature that (1) displays an appropriate copyright notice, and (2) tells the user that there is no warranty for the work (except to the

extent that warranties are provided), that licensees may convey the work under this License, and how to view a copy of this License. If the interface presents a list of user commands or options, such as a menu, a prominent item in the list meets this criterion.

#### 1. Source Code.

The "source code" for a work means the preferred form of the work for making modifications to it. "Object code" means any non-source form of a work.

A "Standard Interface" means an interface that either is an official standard defined by a recognized standards body, or, in the case of interfaces specified for a particular programming language, one that is widely used among developers working in that language.

The "System Libraries" of an executable work include anything, other than the work as a whole, that (a) is included in the normal form of packaging a Major Component, but which is not part of that Major Component, and (b) serves only to enable use of the work with that Major Component, or to implement a Standard Interface for which an implementation is available to the public in source code form. A "Major Component", in this context, means a major essential component (kernel, window system, and so on) of the specific operating system (if any) on which the executable work runs, or a compiler used to produce the work, or an object code interpreter used to run it.

The "Corresponding Source" for a work in object code form means all the source code needed to generate, install, and (for an executable work) run the object code and to modify the work, including scripts to control those activities. However, it does not include the work's System Libraries, or general-purpose tools or generally available free programs which are used unmodified in performing those activities but which are not part of the work. For example, Corresponding Source includes interface definition files associated with source files for the work, and the source code for shared libraries and dynamically linked subprograms that the work is specifically designed to require, such as by intimate data communication or control flow between those subprograms and other parts of the work.

The Corresponding Source need not include anything that users can regenerate automatically from other parts of the Corresponding Source.

The Corresponding Source for a work in source code form is that same work.

#### 2. Basic Permissions.

All rights granted under this License are granted for the term of copyright on the Program, and are irrevocable provided the stated conditions are met. This License explicitly affirms your unlimited permission to run the unmodified Program. The output from running a covered work is covered by this License only if the output, given its content, constitutes a covered work. This License acknowledges your rights of fair use or other equivalent, as provided by copyright law.

You may make, run and propagate covered works that you do not convey, without conditions so long as your license otherwise remains in force. You may convey covered works to others for the sole purpose of having them make modifications exclusively for you, or provide you with facilities for running those works, provided that you comply with the terms of this License in conveying all material for which you do not control copyright. Those thus making or running the covered works for you must do so exclusively on your behalf, under your direction and control, on terms that prohibit them from making any copies of your copyrighted material outside their relationship with you.

Conveying under any other circumstances is permitted solely under the conditions stated below. Sublicensing is not allowed; section 10

makes it unnecessary.

### 3. Protecting Users' Legal Rights From Anti-Circumvention Law.

No covered work shall be deemed part of an effective technological measure under any applicable law fulfilling obligations under article 11 of the WIPO copyright treaty adopted on 20 December 1996, or similar laws prohibiting or restricting circumvention of such measures.

When you convey a covered work, you waive any legal power to forbid circumvention of technological measures to the extent such circumvention is effected by exercising rights under this License with respect to the covered work, and you disclaim any intention to limit operation or modification of the work as a means of enforcing, against the work's users, your or third parties' legal rights to forbid circumvention of technological measures.

### 4. Conveying Verbatim Copies.

You may convey verbatim copies of the Program's source code as you receive it, in any medium, provided that you conspicuously and appropriately publish on each copy an appropriate copyright notice; keep intact all notices stating that this License and any non-permissive terms added in accord with section 7 apply to the code; keep intact all notices of the absence of any warranty; and give all recipients a copy of this License along with the Program.

You may charge any price or no price for each copy that you convey, and you may offer support or warranty protection for a fee.

### 5. Conveying Modified Source Versions.

You may convey a work based on the Program, or the modifications to produce it from the Program, in the form of source code under the terms of section 4, provided that you also meet all of these conditions:

- a) The work must carry prominent notices stating that you modified it, and giving a relevant date.
- b) The work must carry prominent notices stating that it is released under this License and any conditions added under section 7. This requirement modifies the requirement in section 4 to "keep intact all notices".
- c) You must license the entire work, as a whole, under this License to anyone who comes into possession of a copy. This License will therefore apply, along with any applicable section 7 additional terms, to the whole of the work, and all its parts, regardless of how they are packaged. This License gives no permission to license the work in any other way, but it does not invalidate such permission if you have separately received it.
- d) If the work has interactive user interfaces, each must display Appropriate Legal Notices; however, if the Program has interactive interfaces that do not display Appropriate Legal Notices, your work need not make them do so.

A compilation of a covered work with other separate and independent works, which are not by their nature extensions of the covered work, and which are not combined with it such as to form a larger program, in or on a volume of a storage or distribution medium, is called an "aggregate" if the compilation and its resulting copyright are not used to limit the access or legal rights of the compilation's users beyond what the individual works permit. Inclusion of a covered work in an aggregate does not cause this License to apply to the other parts of the aggregate.

### 6. Conveying Non-Source Forms.

You may convey a covered work in object code form under the terms of sections 4 and 5, provided that you also convey the machine-readable Corresponding Source under the terms of this License, in one of these ways:

- a) Convey the object code in, or embodied in, a physical product (including a physical distribution medium), accompanied by the Corresponding Source fixed on a durable physical medium customarily used for software interchange.
- b) Convey the object code in, or embodied in, a physical product (including a physical distribution medium), accompanied by a written offer, valid for at least three years and valid for as long as you offer spare parts or customer support for that product model, to give anyone who possesses the object code either (1) a copy of the Corresponding Source for all the software in the product that is covered by this License, on a durable physical medium customarily used for software interchange, for a price no more than your reasonable cost of physically performing this conveying of source, or (2) access to copy the Corresponding Source from a network server at no charge.
- c) Convey individual copies of the object code with a copy of the written offer to provide the Corresponding Source. This alternative is allowed only occasionally and noncommercially, and only if you received the object code with such an offer, in accord with subsection 6b.
- d) Convey the object code by offering access from a designated place (gratis or for a charge), and offer equivalent access to the Corresponding Source in the same way through the same place at no further charge. You need not require recipients to copy the Corresponding Source along with the object code. If the place to copy the object code is a network server, the Corresponding Source may be on a different server (operated by you or a third party) that supports equivalent copying facilities, provided you maintain clear directions next to the object code saying where to find the Corresponding Source. Regardless of what server hosts the Corresponding Source, you remain obligated to ensure that it is available for as long as needed to satisfy these requirements.
- e) Convey the object code using peer-to-peer transmission, provided you inform other peers where the object code and Corresponding Source of the work are being offered to the general public at no charge under subsection 6d.

A separable portion of the object code, whose source code is excluded from the Corresponding Source as a System Library, need not be included in conveying the object code work.

A "User Product" is either (1) a "consumer product", which means any tangible personal property which is normally used for personal, family, or household purposes, or (2) anything designed or sold for incorporation into a dwelling. In determining whether a product is a consumer product, doubtful cases shall be resolved in favor of coverage. For a particular product received by a particular user, "normally used" refers to a typical or common use of that class of product, regardless of the status of the particular user or of the way in which the particular user actually uses, or expects or is expected to use, the product. A product is a consumer product regardless of whether the product has substantial commercial, industrial or non-consumer uses, unless such uses represent the only significant mode of use of the product.

"Installation Information" for a User Product means any methods, procedures, authorization keys, or other information required to install and execute modified versions of a covered work in that User Product from a modified version of its Corresponding Source. The information must suffice to ensure that the continued functioning of the modified object code is in no case prevented or interfered with solely because modification has been made.

If you convey an object code work under this section in, or with, or specifically for use in, a User Product, and the conveying occurs as part of a transaction in which the right of possession and use of the User Product is transferred to the recipient in perpetuity or for a fixed term (regardless of how the transaction is characterized), the Corresponding Source conveyed under this section must be accompanied by the Installation Information. But this requirement does not apply if neither you nor any third party retains the ability to install modified object code on the User Product (for example, the work has been installed in ROM).

The requirement to provide Installation Information does not include a requirement to continue to provide support service, warranty, or updates for a work that has been modified or installed by the recipient, or for the User Product in which it has been modified or installed. Access to a network may be denied when the modification itself materially and adversely affects the operation of the network or violates the rules and protocols for communication across the network.

Corresponding Source conveyed, and Installation Information provided, in accord with this section must be in a format that is publicly documented (and with an implementation available to the public in source code form), and must require no special password or key for unpacking, reading or copying.

#### 7. Additional Terms.

"Additional permissions" are terms that supplement the terms of this License by making exceptions from one or more of its conditions. Additional permissions that are applicable to the entire Program shall be treated as though they were included in this License, to the extent that they are valid under applicable law. If additional permissions apply only to part of the Program, that part may be used separately under those permissions, but the entire Program remains governed by this License without regard to the additional permissions.

When you convey a copy of a covered work, you may at your option remove any additional permissions from that copy, or from any part of it. (Additional permissions may be written to require their own removal in certain cases when you modify the work.) You may place additional permissions on material, added by you to a covered work, for which you have or can give appropriate copyright permission.

Notwithstanding any other provision of this License, for material you add to a covered work, you may (if authorized by the copyright holders of that material) supplement the terms of this License with terms:

- a) Disclaiming warranty or limiting liability differently from the terms of sections 15 and 16 of this License; or
- b) Requiring preservation of specified reasonable legal notices or author attributions in that material or in the Appropriate Legal Notices displayed by works containing it; or
- c) Prohibiting misrepresentation of the origin of that material, or requiring that modified versions of such material be marked in reasonable ways as different from the original version; or
- d) Limiting the use for publicity purposes of names of licensors or authors of the material; or
- e) Declining to grant rights under trademark law for use of some trade names, trademarks, or service marks; or
- f) Requiring indemnification of licensors and authors of that material by anyone who conveys the material (or modified versions of it) with contractual assumptions of liability to the recipient, for any liability that these contractual assumptions directly impose on those licensors and authors.

All other non-permissive additional terms are considered "further restrictions" within the meaning of section 10. If the Program as you received it, or any part of it, contains a notice stating that it is governed by this License along with a term that is a further restriction, you may remove that term. If a license document contains a further restriction but permits relicensing or conveying under this License, you may add to a covered work material governed by the terms of that license document, provided that the further restriction does not survive such relicensing or conveying.

If you add terms to a covered work in accord with this section, you must place, in the relevant source files, a statement of the additional terms that apply to those files, or a notice indicating where to find the applicable terms.

Additional terms, permissive or non-permissive, may be stated in the form of a separately written license, or stated as exceptions; the above requirements apply either way.

#### 8. Termination.

You may not propagate or modify a covered work except as expressly provided under this License. Any attempt otherwise to propagate or modify it is void, and will automatically terminate your rights under this License (including any patent licenses granted under the third paragraph of section 11).

However, if you cease all violation of this License, then your license from a particular copyright holder is reinstated (a) provisionally, unless and until the copyright holder explicitly and finally terminates your license, and (b) permanently, if the copyright holder fails to notify you of the violation by some reasonable means prior to 60 days after the cessation.

Moreover, your license from a particular copyright holder is reinstated permanently if the copyright holder notifies you of the violation by some reasonable means, this is the first time you have received notice of violation of this License (for any work) from that copyright holder, and you cure the violation prior to 30 days after your receipt of the notice.

Termination of your rights under this section does not terminate the licenses of parties who have received copies or rights from you under this License. If your rights have been terminated and not permanently reinstated, you do not qualify to receive new licenses for the same material under section 10.

#### 9. Acceptance Not Required for Having Copies.

You are not required to accept this License in order to receive or run a copy of the Program. Ancillary propagation of a covered work occurring solely as a consequence of using peer-to-peer transmission to receive a copy likewise does not require acceptance. However, nothing other than this License grants you permission to propagate or modify any covered work. These actions infringe copyright if you do not accept this License. Therefore, by modifying or propagating a covered work, you indicate your acceptance of this License to do so.

#### 10. Automatic Licensing of Downstream Recipients.

Each time you convey a covered work, the recipient automatically receives a license from the original licensors, to run, modify and propagate that work, subject to this License. You are not responsible for enforcing compliance by third parties with this License.

An "entity transaction" is a transaction transferring control of an organization, or substantially all assets of one, or subdividing an organization, or merging organizations. If propagation of a covered work results from an entity transaction, each party to that



transaction who receives a copy of the work also receives whatever licenses to the work the party's predecessor in interest had or could give under the previous paragraph, plus a right to possession of the Corresponding Source of the work from the predecessor in interest, if the predecessor has it or can get it with reasonable efforts.

You may not impose any further restrictions on the exercise of the rights granted or affirmed under this License. For example, you may not impose a license fee, royalty, or other charge for exercise of rights granted under this License, and you may not initiate litigation (including a cross-claim or counterclaim in a lawsuit) alleging that any patent claim is infringed by making, using, selling, offering for sale, or importing the Program or any portion of it.

#### 11. Patents.

A "contributor" is a copyright holder who authorizes use under this License of the Program or a work on which the Program is based. The work thus licensed is called the contributor's "contributor version".

A contributor's "essential patent claims" are all patent claims owned or controlled by the contributor, whether already acquired or hereafter acquired, that would be infringed by some manner, permitted by this License, of making, using, or selling its contributor version, but do not include claims that would be infringed only as a consequence of further modification of the contributor version. For purposes of this definition, "control" includes the right to grant patent sublicenses in a manner consistent with the requirements of this License.

Each contributor grants you a non-exclusive, worldwide, royalty-free patent license under the contributor's essential patent claims, to make, use, sell, offer for sale, import and otherwise run, modify and propagate the contents of its contributor version.

In the following three paragraphs, a "patent license" is any express agreement or commitment, however denominated, not to enforce a patent (such as an express permission to practice a patent or covenant not to sue for patent infringement). To "grant" such a patent license to a party means to make such an agreement or commitment not to enforce a patent against the party.

If you convey a covered work, knowingly relying on a patent license, and the Corresponding Source of the work is not available for anyone to copy, free of charge and under the terms of this License, through a publicly available network server or other readily accessible means, then you must either (1) cause the Corresponding Source to be so available, or (2) arrange to deprive yourself of the benefit of the patent license for this particular work, or (3) arrange, in a manner consistent with the requirements of this License, to extend the patent license to downstream recipients. "Knowingly relying" means you have actual knowledge that, but for the patent license, your conveying the covered work in a country, or your recipient's use of the covered work in a country, would infringe one or more identifiable patents in that country that you have reason to believe are valid.

If, pursuant to or in connection with a single transaction or arrangement, you convey, or propagate by procuring conveyance of, a covered work, and grant a patent license to some of the parties receiving the covered work authorizing them to use, propagate, modify or convey a specific copy of the covered work, then the patent license you grant is automatically extended to all recipients of the covered work and works based on it.

A patent license is "discriminatory" if it does not include within the scope of its coverage, prohibits the exercise of, or is conditioned on the non-exercise of one or more of the rights that are specifically granted under this License. You may not convey a covered work if you are a party to an arrangement with a third party that is in the business of distributing software, under which you make payment

to the third party based on the extent of your activity of conveying the work, and under which the third party grants, to any of the parties who would receive the covered work from you, a discriminatory patent license (a) in connection with copies of the covered work conveyed by you (or copies made from those copies), or (b) primarily for and in connection with specific products or compilations that contain the covered work, unless you entered into that arrangement, or that patent license was granted, prior to 28 March 2007.

Nothing in this License shall be construed as excluding or limiting any implied license or other defenses to infringement that may otherwise be available to you under applicable patent law.

#### 12. No Surrender of Others' Freedom.

If conditions are imposed on you (whether by court order, agreement or otherwise) that contradict the conditions of this License, they do not excuse you from the conditions of this License. If you cannot convey a covered work so as to satisfy simultaneously your obligations under this License and any other pertinent obligations, then as a consequence you may not convey it at all. For example, if you agree to terms that obligate you to collect a royalty for further conveying from those to whom you convey the Program, the only way you could satisfy both those terms and this License would be to refrain entirely from conveying the Program.

#### 13. Use with the GNU Affero General Public License.

Notwithstanding any other provision of this License, you have permission to link or combine any covered work with a work licensed under version 3 of the GNU Affero General Public License into a single combined work, and to convey the resulting work. The terms of this License will continue to apply to the part which is the covered work, but the special requirements of the GNU Affero General Public License, section 13, concerning interaction through a network will apply to the combination as such.

#### 14. Revised Versions of this License.

The Free Software Foundation may publish revised and/or new versions of the GNU General Public License from time to time. Such new versions will be similar in spirit to the present version, but may differ in detail to address new problems or concerns.

Each version is given a distinguishing version number. If the Program specifies that a certain numbered version of the GNU General Public License "or any later version" applies to it, you have the option of following the terms and conditions either of that numbered version or of any later version published by the Free Software Foundation. If the Program does not specify a version number of the GNU General Public License, you may choose any version ever published by the Free Software Foundation.

If the Program specifies that a proxy can decide which future versions of the GNU General Public License can be used, that proxy's public statement of acceptance of a version permanently authorizes you to choose that version for the Program.

Later license versions may give you additional or different permissions. However, no additional obligations are imposed on any author or copyright holder as a result of your choosing to follow a later version.

#### 15. Disclaimer of Warranty.

THERE IS NO WARRANTY FOR THE PROGRAM, TO THE EXTENT PERMITTED BY APPLICABLE LAW. EXCEPT WHEN OTHERWISE STATED IN WRITING THE COPYRIGHT HOLDERS AND/OR OTHER PARTIES PROVIDE THE PROGRAM "AS IS" WITHOUT WARRANTY OF ANY KIND, EITHER EXPRESSED OR IMPLIED, INCLUDING, BUT NOT LIMITED TO, THE IMPLIED WARRANTIES OF MERCHANTABILITY AND FITNESS FOR A PARTICULAR PURPOSE. THE ENTIRE RISK AS TO THE QUALITY AND PERFORMANCE OF THE PROGRAM

IS WITH YOU. SHOULD THE PROGRAM PROVE DEFECTIVE, YOU ASSUME THE COST OF ALL NECESSARY SERVICING, REPAIR OR CORRECTION.

#### 16. Limitation of Liability.

IN NO EVENT UNLESS REQUIRED BY APPLICABLE LAW OR AGREED TO IN WRITING WILL ANY COPYRIGHT HOLDER, OR ANY OTHER PARTY WHO MODIFIES AND/OR CONVEYS THE PROGRAM AS PERMITTED ABOVE, BE LIABLE TO YOU FOR DAMAGES, INCLUDING ANY GENERAL, SPECIAL, INCIDENTAL OR CONSEQUENTIAL DAMAGES ARISING OUT OF THE USE OR INABILITY TO USE THE PROGRAM (INCLUDING BUT NOT LIMITED TO LOSS OF DATA OR DATA BEING RENDERED INACCURATE OR LOSSES SUSTAINED BY YOU OR THIRD PARTIES OR A FAILURE OF THE PROGRAM TO OPERATE WITH ANY OTHER PROGRAMS), EVEN IF SUCH HOLDER OR OTHER PARTY HAS BEEN ADVISED OF THE POSSIBILITY OF SUCH DAMAGES.

#### 17. Interpretation of Sections 15 and 16.

If the disclaimer of warranty and limitation of liability provided above cannot be given local legal effect according to their terms, reviewing courts shall apply local law that most closely approximates an absolute waiver of all civil liability in connection with the Program, unless a warranty or assumption of liability accompanies a copy of the Program in return for a fee.

END OF TERMS AND CONDITIONS

#### How to Apply These Terms to Your New Programs

If you develop a new program, and you want it to be of the greatest possible use to the public, the best way to achieve this is to make it free software which everyone can redistribute and change under these terms.

To do so, attach the following notices to the program. It is safest to attach them to the start of each source file to most effectively state the exclusion of warranty; and each file should have at least the "copyright" line and a pointer to where the full notice is found.

```
<one line to give the program's name and a brief idea of what it does.>
Copyright (C) <year> <name of author>
```

```
This program is free software: you can redistribute it and/or modify
it under the terms of the GNU General Public License as published by
the Free Software Foundation, either version 3 of the License, or
(at your option) any later version.
```

```
This program is distributed in the hope that it will be useful,
but WITHOUT ANY WARRANTY; without even the implied warranty of
MERCHANTABILITY or FITNESS FOR A PARTICULAR PURPOSE. See the
GNU General Public License for more details.
```

```
You should have received a copy of the GNU General Public License
along with this program. If not, see <https://www.gnu.org/licenses/>.
```

Also add information on how to contact you by electronic and paper mail.

If the program does terminal interaction, make it output a short notice like this when it starts in an interactive mode:

```
<program> Copyright (C) <year> <name of author>
This program comes with ABSOLUTELY NO WARRANTY; for details type `show w'.
This is free software, and you are welcome to redistribute it
under certain conditions; type `show c' for details.
```

The hypothetical commands `show w' and `show c' should show the appropriate parts of the General Public License. Of course, your program's commands might be different; for a GUI interface, you would use an "about box".

You should also get your employer (if you work as a programmer) or school, if any, to sign a "copyright disclaimer" for the program, if necessary. For more information on this, and how to apply and follow the GNU GPL, see

<<https://www.gnu.org/licenses/>>.

The GNU General Public License does not permit incorporating your program into proprietary programs. If your program is a subroutine library, you may consider it more useful to permit linking proprietary applications with the library. If this is what you want to do, use the GNU Lesser General Public License instead of this License. But first, please read <<https://www.gnu.org/licenses/why-not-lgpl.html>>.

## GPL 2.0

### GNU GENERAL PUBLIC LICENSE Version 2, June 1991

Copyright (C) 1989, 1991 Free Software Foundation, Inc.,  
51 Franklin Street, Fifth Floor, Boston, MA 02110-1301 USA  
Everyone is permitted to copy and distribute verbatim copies  
of this license document, but changing it is not allowed.

#### Preamble

The licenses for most software are designed to take away your freedom to share and change it. By contrast, the GNU General Public License is intended to guarantee your freedom to share and change free software--to make sure the software is free for all its users. This General Public License applies to most of the Free Software Foundation's software and to any other program whose authors commit to using it. (Some other Free Software Foundation software is covered by the GNU Lesser General Public License instead.) You can apply it to your programs, too.

When we speak of free software, we are referring to freedom, not price. Our General Public Licenses are designed to make sure that you have the freedom to distribute copies of free software (and charge for this service if you wish), that you receive source code or can get it if you want it, that you can change the software or use pieces of it in new free programs; and that you know you can do these things.

To protect your rights, we need to make restrictions that forbid anyone to deny you these rights or to ask you to surrender the rights. These restrictions translate to certain responsibilities for you if you distribute copies of the software, or if you modify it.

For example, if you distribute copies of such a program, whether gratis or for a fee, you must give the recipients all the rights that you have. You must make sure that they, too, receive or can get the source code. And you must show them these terms so they know their rights.

We protect your rights with two steps: (1) copyright the software, and (2) offer you this license which gives you legal permission to copy, distribute and/or modify the software.

Also, for each author's protection and ours, we want to make certain that everyone understands that there is no warranty for this free software. If the software is modified by someone else and passed on, we want its recipients to know that what they have is not the original, so that any problems introduced by others will not reflect on the original authors' reputations.

Finally, any free program is threatened constantly by software patents. We wish to avoid the danger that redistributors of a free program will individually obtain patent licenses, in effect making the program proprietary. To prevent this, we have made it clear that any patent must be licensed for everyone's free use or not licensed at all.

The precise terms and conditions for copying, distribution and modification follow.

GNU GENERAL PUBLIC LICENSE  
TERMS AND CONDITIONS FOR COPYING, DISTRIBUTION AND MODIFICATION

0. This License applies to any program or other work which contains a notice placed by the copyright holder saying it may be distributed under the terms of this General Public License. The "Program", below, refers to any such program or work, and a "work based on the Program" means either the Program or any derivative work under copyright law: that is to say, a work containing the Program or a portion of it, either verbatim or with modifications and/or translated into another language. (Hereinafter, translation is included without limitation in the term "modification".) Each licensee is addressed as "you".

Activities other than copying, distribution and modification are not covered by this License; they are outside its scope. The act of running the Program is not restricted, and the output from the Program is covered only if its contents constitute a work based on the Program (independent of having been made by running the Program). Whether that is true depends on what the Program does.

1. You may copy and distribute verbatim copies of the Program's source code as you receive it, in any medium, provided that you conspicuously and appropriately publish on each copy an appropriate copyright notice and disclaimer of warranty; keep intact all the notices that refer to this License and to the absence of any warranty; and give any other recipients of the Program a copy of this License along with the Program.

You may charge a fee for the physical act of transferring a copy, and you may at your option offer warranty protection in exchange for a fee.

2. You may modify your copy or copies of the Program or any portion of it, thus forming a work based on the Program, and copy and distribute such modifications or work under the terms of Section 1 above, provided that you also meet all of these conditions:

- a) You must cause the modified files to carry prominent notices stating that you changed the files and the date of any change.
- b) You must cause any work that you distribute or publish, that in whole or in part contains or is derived from the Program or any part thereof, to be licensed as a whole at no charge to all third parties under the terms of this License.
- c) If the modified program normally reads commands interactively when run, you must cause it, when started running for such interactive use in the most ordinary way, to print or display an announcement including an appropriate copyright notice and a notice that there is no warranty (or else, saying that you provide a warranty) and that users may redistribute the program under these conditions, and telling the user how to view a copy of this License. (Exception: if the Program itself is interactive but does not normally print such an announcement, your work based on the Program is not required to print an announcement.)

These requirements apply to the modified work as a whole. If identifiable sections of that work are not derived from the Program, and can be reasonably considered independent and separate works in themselves, then this License, and its terms, do not apply to those sections when you distribute them as separate works. But when you distribute the same sections as part of a whole which is a work based on the Program, the distribution of the whole must be on the terms of this License, whose permissions for other licensees extend to the entire whole, and thus to each and every part regardless of who wrote it.

Thus, it is not the intent of this section to claim rights or contest your rights to work written entirely by you; rather, the intent is to exercise the right to control the distribution of derivative or collective works based on the Program.

In addition, mere aggregation of another work not based on the Program with the Program (or with a work based on the Program) on a volume of a storage or distribution medium does not bring the other work under the scope of this License.

3. You may copy and distribute the Program (or a work based on it, under Section 2) in object code or executable form under the terms of Sections 1 and 2 above provided that you also do one of the following:

- a) Accompany it with the complete corresponding machine-readable source code, which must be distributed under the terms of Sections 1 and 2 above on a medium customarily used for software interchange; or,
- b) Accompany it with a written offer, valid for at least three years, to give any third party, for a charge no more than your cost of physically performing source distribution, a complete machine-readable copy of the corresponding source code, to be distributed under the terms of Sections 1 and 2 above on a medium customarily used for software interchange; or,
- c) Accompany it with the information you received as to the offer to distribute corresponding source code. (This alternative is allowed only for noncommercial distribution and only if you received the program in object code or executable form with such an offer, in accord with Subsection b above.)

The source code for a work means the preferred form of the work for making modifications to it. For an executable work, complete source code means all the source code for all modules it contains, plus any associated interface definition files, plus the scripts used to control compilation and installation of the executable. However, as a special exception, the source code distributed need not include anything that is normally distributed (in either source or binary form) with the major components (compiler, kernel, and so on) of the operating system on which the executable runs, unless that component itself accompanies the executable.

If distribution of executable or object code is made by offering access to copy from a designated place, then offering equivalent access to copy the source code from the same place counts as distribution of the source code, even though third parties are not compelled to copy the source along with the object code.

4. You may not copy, modify, sublicense, or distribute the Program except as expressly provided under this License. Any attempt otherwise to copy, modify, sublicense or distribute the Program is void, and will automatically terminate your rights under this License. However, parties who have received copies, or rights, from you under this License will not have their licenses terminated so long as such parties remain in full compliance.

5. You are not required to accept this License, since you have not signed it. However, nothing else grants you permission to modify or distribute the Program or its derivative works. These actions are prohibited by law if you do not accept this License. Therefore, by modifying or distributing the Program (or any work based on the Program), you indicate your acceptance of this License to do so, and all its terms and conditions for copying, distributing or modifying the Program or works based on it.

6. Each time you redistribute the Program (or any work based on the Program), the recipient automatically receives a license from the original licensor to copy, distribute or modify the Program subject to these terms and conditions. You may not impose any further restrictions on the recipients' exercise of the rights granted herein. You are not responsible for enforcing compliance by third parties to this License.

7. If, as a consequence of a court judgment or allegation of patent infringement or for any other reason (not limited to patent issues),

conditions are imposed on you (whether by court order, agreement or otherwise) that contradict the conditions of this License, they do not excuse you from the conditions of this License. If you cannot distribute so as to satisfy simultaneously your obligations under this License and any other pertinent obligations, then as a consequence you may not distribute the Program at all. For example, if a patent license would not permit royalty-free redistribution of the Program by all those who receive copies directly or indirectly through you, then the only way you could satisfy both it and this License would be to refrain entirely from distribution of the Program.

If any portion of this section is held invalid or unenforceable under any particular circumstance, the balance of the section is intended to apply and the section as a whole is intended to apply in other circumstances.

It is not the purpose of this section to induce you to infringe any patents or other property right claims or to contest validity of any such claims; this section has the sole purpose of protecting the integrity of the free software distribution system, which is implemented by public license practices. Many people have made generous contributions to the wide range of software distributed through that system in reliance on consistent application of that system; it is up to the author/donor to decide if he or she is willing to distribute software through any other system and a licensee cannot impose that choice.

This section is intended to make thoroughly clear what is believed to be a consequence of the rest of this License.

8. If the distribution and/or use of the Program is restricted in certain countries either by patents or by copyrighted interfaces, the original copyright holder who places the Program under this License may add an explicit geographical distribution limitation excluding those countries, so that distribution is permitted only in or among countries not thus excluded. In such case, this License incorporates the limitation as if written in the body of this License.

9. The Free Software Foundation may publish revised and/or new versions of the General Public License from time to time. Such new versions will be similar in spirit to the present version, but may differ in detail to address new problems or concerns.

Each version is given a distinguishing version number. If the Program specifies a version number of this License which applies to it and "any later version", you have the option of following the terms and conditions either of that version or of any later version published by the Free Software Foundation. If the Program does not specify a version number of this License, you may choose any version ever published by the Free Software Foundation.

10. If you wish to incorporate parts of the Program into other free programs whose distribution conditions are different, write to the author to ask for permission. For software which is copyrighted by the Free Software Foundation, write to the Free Software Foundation; we sometimes make exceptions for this. Our decision will be guided by the two goals of preserving the free status of all derivatives of our free software and of promoting the sharing and reuse of software generally.

#### NO WARRANTY

11. BECAUSE THE PROGRAM IS LICENSED FREE OF CHARGE, THERE IS NO WARRANTY FOR THE PROGRAM, TO THE EXTENT PERMITTED BY APPLICABLE LAW. EXCEPT WHEN OTHERWISE STATED IN WRITING THE COPYRIGHT HOLDERS AND/OR OTHER PARTIES PROVIDE THE PROGRAM "AS IS" WITHOUT WARRANTY OF ANY KIND, EITHER EXPRESSED OR IMPLIED, INCLUDING, BUT NOT LIMITED TO, THE IMPLIED WARRANTIES OF MERCHANTABILITY AND FITNESS FOR A PARTICULAR PURPOSE. THE ENTIRE RISK AS TO THE QUALITY AND PERFORMANCE OF THE PROGRAM IS WITH YOU. SHOULD THE PROGRAM PROVE DEFECTIVE, YOU ASSUME THE COST OF ALL NECESSARY SERVICING, REPAIR OR CORRECTION.

12. IN NO EVENT UNLESS REQUIRED BY APPLICABLE LAW OR AGREED TO IN WRITING WILL ANY COPYRIGHT HOLDER, OR ANY OTHER PARTY WHO MAY MODIFY AND/OR REDISTRIBUTE THE PROGRAM AS PERMITTED ABOVE, BE LIABLE TO YOU FOR DAMAGES, INCLUDING ANY GENERAL, SPECIAL, INCIDENTAL OR CONSEQUENTIAL DAMAGES ARISING OUT OF THE USE OR INABILITY TO USE THE PROGRAM (INCLUDING BUT NOT LIMITED TO LOSS OF DATA OR DATA BEING RENDERED INACCURATE OR LOSSES SUSTAINED BY YOU OR THIRD PARTIES OR A FAILURE OF THE PROGRAM TO OPERATE WITH ANY OTHER PROGRAMS), EVEN IF SUCH HOLDER OR OTHER PARTY HAS BEEN ADVISED OF THE POSSIBILITY OF SUCH DAMAGES.

#### END OF TERMS AND CONDITIONS

#### How to Apply These Terms to Your New Programs

If you develop a new program, and you want it to be of the greatest possible use to the public, the best way to achieve this is to make it free software which everyone can redistribute and change under these terms.

To do so, attach the following notices to the program. It is safest to attach them to the start of each source file to most effectively convey the exclusion of warranty; and each file should have at least the "copyright" line and a pointer to where the full notice is found.

```
<one line to give the program's name and a brief idea of what it does.>
Copyright (C) <year> <name of author>
```

```
This program is free software; you can redistribute it and/or modify
it under the terms of the GNU General Public License as published by
the Free Software Foundation; either version 2 of the License, or
(at your option) any later version.
```

```
This program is distributed in the hope that it will be useful,
but WITHOUT ANY WARRANTY; without even the implied warranty of
MERCHANTABILITY or FITNESS FOR A PARTICULAR PURPOSE. See the
GNU General Public License for more details.
```

```
You should have received a copy of the GNU General Public License along
with this program; if not, write to the Free Software Foundation, Inc.,
51 Franklin Street, Fifth Floor, Boston, MA 02110-1301 USA.
```

Also add information on how to contact you by electronic and paper mail.

If the program is interactive, make it output a short notice like this when it starts in an interactive mode:

```
Gnomovision version 69, Copyright (C) year name of author
Gnomovision comes with ABSOLUTELY NO WARRANTY; for details type `show w'.
This is free software, and you are welcome to redistribute it
under certain conditions; type `show c' for details.
```

The hypothetical commands `show w' and `show c' should show the appropriate parts of the General Public License. Of course, the commands you use may be called something other than `show w' and `show c'; they could even be mouse-clicks or menu items--whatever suits your program.

You should also get your employer (if you work as a programmer) or your school, if any, to sign a "copyright disclaimer" for the program, if necessary. Here is a sample; alter the names:

```
Yoyodyne, Inc., hereby disclaims all copyright interest in the program
`Gnomovision' (which makes passes at compilers) written by James Hacker.
```

```
<signature of Ty Coon>, 1 April 1989
Ty Coon, President of Vice
```

This General Public License does not permit incorporating your program into proprietary programs. If your program is a subroutine library, you may consider it more useful to permit linking proprietary applications with the library. If this is what you want to do, use the GNU Lesser General



Public License instead of this License.

## Apache 2.0

Apache License  
Version 2.0, January 2004  
<http://www.apache.org/licenses/>

### TERMS AND CONDITIONS FOR USE, REPRODUCTION, AND DISTRIBUTION

#### 1. Definitions.

"License" shall mean the terms and conditions for use, reproduction, and distribution as defined by Sections 1 through 9 of this document.

"Licensor" shall mean the copyright owner or entity authorized by the copyright owner that is granting the License.

"Legal Entity" shall mean the union of the acting entity and all other entities that control, are controlled by, or are under common control with that entity. For the purposes of this definition, "control" means (i) the power, direct or indirect, to cause the direction or management of such entity, whether by contract or otherwise, or (ii) ownership of fifty percent (50%) or more of the outstanding shares, or (iii) beneficial ownership of such entity.

"You" (or "Your") shall mean an individual or Legal Entity exercising permissions granted by this License.

"Source" form shall mean the preferred form for making modifications, including but not limited to software source code, documentation source, and configuration files.

"Object" form shall mean any form resulting from mechanical transformation or translation of a Source form, including but not limited to compiled object code, generated documentation, and conversions to other media types.

"Work" shall mean the work of authorship, whether in Source or Object form, made available under the License, as indicated by a copyright notice that is included in or attached to the work (an example is provided in the Appendix below).

"Derivative Works" shall mean any work, whether in Source or Object form, that is based on (or derived from) the Work and for which the editorial revisions, annotations, elaborations, or other modifications represent, as a whole, an original work of authorship. For the purposes of this License, Derivative Works shall not include works that remain separable from, or merely link (or bind by name) to the interfaces of, the Work and Derivative Works thereof.

"Contribution" shall mean any work of authorship, including the original version of the Work and any modifications or additions to that Work or Derivative Works thereof, that is intentionally submitted to Licensor for inclusion in the Work by the copyright owner or by an individual or Legal Entity authorized to submit on behalf of the copyright owner. For the purposes of this definition, "submitted" means any form of electronic, verbal, or written communication sent to the Licensor or its representatives, including but not limited to communication on electronic mailing lists, source code control systems, and issue tracking systems that are managed by, or on behalf of, the Licensor for the purpose of discussing and improving the Work, but excluding communication that is conspicuously marked or otherwise designated in writing by the copyright owner as "Not a Contribution."

"Contributor" shall mean Licensor and any individual or Legal Entity on behalf of whom a Contribution has been received by Licensor and subsequently incorporated within the Work.

2. Grant of Copyright License. Subject to the terms and conditions of this License, each Contributor hereby grants to You a perpetual, worldwide, non-exclusive, no-charge, royalty-free, irrevocable copyright license to reproduce, prepare Derivative Works of, publicly display, publicly perform, sublicense, and distribute the Work and such Derivative Works in Source or Object form.
3. Grant of Patent License. Subject to the terms and conditions of this License, each Contributor hereby grants to You a perpetual, worldwide, non-exclusive, no-charge, royalty-free, irrevocable (except as stated in this section) patent license to make, have made, use, offer to sell, sell, import, and otherwise transfer the Work, where such license applies only to those patent claims licensable by such Contributor that are necessarily infringed by their Contribution(s) alone or by combination of their Contribution(s) with the Work to which such Contribution(s) was submitted. If You institute patent litigation against any entity (including a cross-claim or counterclaim in a lawsuit) alleging that the Work or a Contribution incorporated within the Work constitutes direct or contributory patent infringement, then any patent licenses granted to You under this License for that Work shall terminate as of the date such litigation is filed.
4. Redistribution. You may reproduce and distribute copies of the Work or Derivative Works thereof in any medium, with or without modifications, and in Source or Object form, provided that You meet the following conditions:
  - (a) You must give any other recipients of the Work or Derivative Works a copy of this License; and
  - (b) You must cause any modified files to carry prominent notices stating that You changed the files; and
  - (c) You must retain, in the Source form of any Derivative Works that You distribute, all copyright, patent, trademark, and attribution notices from the Source form of the Work, excluding those notices that do not pertain to any part of the Derivative Works; and
  - (d) If the Work includes a "NOTICE" text file as part of its distribution, then any Derivative Works that You distribute must include a readable copy of the attribution notices contained within such NOTICE file, excluding those notices that do not pertain to any part of the Derivative Works, in at least one of the following places: within a NOTICE text file distributed as part of the Derivative Works; within the Source form or documentation, if provided along with the Derivative Works; or, within a display generated by the Derivative Works, if and wherever such third-party notices normally appear. The contents of the NOTICE file are for informational purposes only and do not modify the License. You may add Your own attribution notices within Derivative Works that You distribute, alongside or as an addendum to the NOTICE text from the Work, provided that such additional attribution notices cannot be construed as modifying the License.

You may add Your own copyright statement to Your modifications and may provide additional or different license terms and conditions for use, reproduction, or distribution of Your modifications, or for any such Derivative Works as a whole, provided Your use, reproduction, and distribution of the Work otherwise complies with the conditions stated in this License.
5. Submission of Contributions. Unless You explicitly state otherwise, any Contribution intentionally submitted for inclusion in the Work by You to the Licensor shall be under the terms and conditions of this License, without any additional terms or conditions. Notwithstanding the above, nothing herein shall supersede or modify the terms of any separate license agreement you may have executed

with Licensor regarding such Contributions.

6. Trademarks. This License does not grant permission to use the trade names, trademarks, service marks, or product names of the Licensor, except as required for reasonable and customary use in describing the origin of the Work and reproducing the content of the NOTICE file.
7. Disclaimer of Warranty. Unless required by applicable law or agreed to in writing, Licensor provides the Work (and each Contributor provides its Contributions) on an "AS IS" BASIS, WITHOUT WARRANTIES OR CONDITIONS OF ANY KIND, either express or implied, including, without limitation, any warranties or conditions of TITLE, NON-INFRINGEMENT, MERCHANTABILITY, or FITNESS FOR A PARTICULAR PURPOSE. You are solely responsible for determining the appropriateness of using or redistributing the Work and assume any risks associated with Your exercise of permissions under this License.
8. Limitation of Liability. In no event and under no legal theory, whether in tort (including negligence), contract, or otherwise, unless required by applicable law (such as deliberate and grossly negligent acts) or agreed to in writing, shall any Contributor be liable to You for damages, including any direct, indirect, special, incidental, or consequential damages of any character arising as a result of this License or out of the use or inability to use the Work (including but not limited to damages for loss of goodwill, work stoppage, computer failure or malfunction, or any and all other commercial damages or losses), even if such Contributor has been advised of the possibility of such damages.
9. Accepting Warranty or Additional Liability. While redistributing the Work or Derivative Works thereof, You may choose to offer, and charge a fee for, acceptance of support, warranty, indemnity, or other liability obligations and/or rights consistent with this License. However, in accepting such obligations, You may act only on Your own behalf and on Your sole responsibility, not on behalf of any other Contributor, and only if You agree to indemnify, defend, and hold each Contributor harmless for any liability incurred by, or claims asserted against, such Contributor by reason of your accepting any such warranty or additional liability.

END OF TERMS AND CONDITIONS

APPENDIX: How to apply the Apache License to your work.

To apply the Apache License to your work, attach the following boilerplate notice, with the fields enclosed by brackets "[]" replaced with your own identifying information. (Don't include the brackets!) The text should be enclosed in the appropriate comment syntax for the file format. We also recommend that a file or class name and description of purpose be included on the same "printed page" as the copyright notice for easier identification within third-party archives.

Copyright [yyyy] [name of copyright owner]

Licensed under the Apache License, Version 2.0 (the "License");  
you may not use this file except in compliance with the License.  
You may obtain a copy of the License at

<http://www.apache.org/licenses/LICENSE-2.0>

Unless required by applicable law or agreed to in writing, software distributed under the License is distributed on an "AS IS" BASIS, WITHOUT WARRANTIES OR CONDITIONS OF ANY KIND, either express or implied. See the License for the specific language governing permissions and limitations under the License.

**BSL 1.0**

Boost Software License - Version 1.0 - August 17th, 2003

Permission is hereby granted, free of charge, to any person or organization obtaining a copy of the software and accompanying documentation covered by this license (the "Software") to use, reproduce, display, distribute, execute, and transmit the Software, and to prepare derivative works of the Software, and to permit third-parties to whom the Software is furnished to do so, all subject to the following:

The copyright notices in the Software and this entire statement, including the above license grant, this restriction and the following disclaimer, must be included in all copies of the Software, in whole or in part, and all derivative works of the Software, unless such copies or derivative works are solely in the form of machine-executable object code generated by a source language processor.

THE SOFTWARE IS PROVIDED "AS IS", WITHOUT WARRANTY OF ANY KIND, EXPRESS OR IMPLIED, INCLUDING BUT NOT LIMITED TO THE WARRANTIES OF MERCHANTABILITY, FITNESS FOR A PARTICULAR PURPOSE, TITLE AND NON-INFRINGEMENT. IN NO EVENT SHALL THE COPYRIGHT HOLDERS OR ANYONE DISTRIBUTING THE SOFTWARE BE LIABLE FOR ANY DAMAGES OR OTHER LIABILITY, WHETHER IN CONTRACT, TORT OR OTHERWISE, ARISING FROM, OUT OF OR IN CONNECTION WITH THE SOFTWARE OR THE USE OR OTHER DEALINGS IN THE SOFTWARE.

#### BSD 2.0

Redistribution and use in source and binary forms, with or without modification, are permitted provided that the following conditions are met:

- \* Redistributions of source code must retain the above copyright notice, this list of conditions and the following disclaimer.
- \* Redistributions in binary form must reproduce the above copyright notice, this list of conditions and the following disclaimer in the documentation and/or other materials provided with the distribution.
- \* Neither the name of the <organization> nor the names of its contributors may be used to endorse or promote products derived from this software without specific prior written permission.

THIS SOFTWARE IS PROVIDED BY THE COPYRIGHT HOLDERS AND CONTRIBUTORS "AS IS" AND ANY EXPRESS OR IMPLIED WARRANTIES, INCLUDING, BUT NOT LIMITED TO, THE IMPLIED WARRANTIES OF MERCHANTABILITY AND FITNESS FOR A PARTICULAR PURPOSE ARE DISCLAIMED. IN NO EVENT SHALL <COPYRIGHT HOLDER> BE LIABLE FOR ANY DIRECT, INDIRECT, INCIDENTAL, SPECIAL, EXEMPLARY, OR CONSEQUENTIAL DAMAGES (INCLUDING, BUT NOT LIMITED TO, PROCUREMENT OF SUBSTITUTE GOODS OR SERVICES; LOSS OF USE, DATA, OR PROFITS; OR BUSINESS INTERRUPTION) HOWEVER CAUSED AND ON ANY THEORY OF LIABILITY, WHETHER IN CONTRACT, STRICT LIABILITY, OR TORT (INCLUDING NEGLIGENCE OR OTHERWISE) ARISING IN ANY WAY OUT OF THE USE OF THIS SOFTWARE, EVEN IF ADVISED OF THE POSSIBILITY OF SUCH DAMAGE.

#### MIT

Permission is hereby granted, free of charge, to any person obtaining a copy of this software and associated documentation files (the "Software"), to deal in the Software without restriction, including without limitation the rights to use, copy, modify, merge, publish, distribute, sublicense, and/or sell copies of the Software, and to permit persons to whom the Software is furnished to do so, subject to the following conditions:

The above copyright notice and this permission notice shall be included in all copies or substantial portions of the Software.

THE SOFTWARE IS PROVIDED "AS IS", WITHOUT WARRANTY OF ANY KIND, EXPRESS OR IMPLIED, INCLUDING BUT NOT LIMITED TO THE WARRANTIES OF MERCHANTABILITY, FITNESS FOR A PARTICULAR PURPOSE AND NON-INFRINGEMENT. IN NO EVENT SHALL THE AUTHORS OR COPYRIGHT HOLDERS BE LIABLE FOR ANY CLAIM, DAMAGES OR OTHER LIABILITY, WHETHER IN AN ACTION OF CONTRACT, TORT OR OTHERWISE, ARISING FROM, OUT OF OR IN CONNECTION WITH THE SOFTWARE OR THE USE OR OTHER DEALINGS IN THE SOFTWARE.

#### FTL

## The FreeType Project LICENSE

2006-Jan-27

Copyright 1996-2002, 2006 by  
David Turner, Robert Wilhelm, and Werner Lemberg

## Introduction

=====

The FreeType Project is distributed in several archive packages; some of them may contain, in addition to the FreeType font engine, various tools and contributions which rely on, or relate to, the FreeType Project.

This license applies to all files found in such packages, and which do not fall under their own explicit license. The license affects thus the FreeType font engine, the test programs, documentation and makefiles, at the very least.

This license was inspired by the BSD, Artistic, and IJG (Independent JPEG Group) licenses, which all encourage inclusion and use of free software in commercial and freeware products alike. As a consequence, its main points are that:

- o We don't promise that this software works. However, we will be interested in any kind of bug reports. ('as is' distribution)
- o You can use this software for whatever you want, in parts or full form, without having to pay us. ('royalty-free' usage)
- o You may not pretend that you wrote this software. If you use it, or only parts of it, in a program, you must acknowledge somewhere in your documentation that you have used the FreeType code. ('credits')

We specifically permit and encourage the inclusion of this software, with or without modifications, in commercial products. We disclaim all warranties covering The FreeType Project and assume no liability related to The FreeType Project.

Finally, many people asked us for a preferred form for a credit/disclaimer to use in compliance with this license. We thus encourage you to use the following text:

```
"""
Portions of this software are copyright © <year> The FreeType
Project (www.freetype.org). All rights reserved.
"""
```

Please replace <year> with the value from the FreeType version you actually use.

## Legal Terms

=====

## 0. Definitions

-----

Throughout this license, the terms 'package', 'FreeType Project', and 'FreeType archive' refer to the set of files originally distributed by the authors (David Turner, Robert Wilhelm, and Werner Lemberg) as the 'FreeType Project', be they named as alpha, beta or final release.

'You' refers to the licensee, or person using the project, where 'using' is a generic term including compiling the project's source code as well as linking it to form a 'program' or 'executable'. This program is referred to as 'a program using the FreeType engine'.

This license applies to all files distributed in the original FreeType Project, including all source code, binaries and documentation, unless otherwise stated in the file in its original, unmodified form as distributed in the original archive. If you are unsure whether or not a particular file is covered by this license, you must contact us to verify this.

The FreeType Project is copyright (C) 1996-2000 by David Turner, Robert Wilhelm, and Werner Lemberg. All rights reserved except as specified below.

### 1. No Warranty

-----

THE FREETYPE PROJECT IS PROVIDED 'AS IS' WITHOUT WARRANTY OF ANY KIND, EITHER EXPRESS OR IMPLIED, INCLUDING, BUT NOT LIMITED TO, WARRANTIES OF MERCHANTABILITY AND FITNESS FOR A PARTICULAR PURPOSE. IN NO EVENT WILL ANY OF THE AUTHORS OR COPYRIGHT HOLDERS BE LIABLE FOR ANY DAMAGES CAUSED BY THE USE OR THE INABILITY TO USE, OF THE FREETYPE PROJECT.

### 2. Redistribution

-----

This license grants a worldwide, royalty-free, perpetual and irrevocable right and license to use, execute, perform, compile, display, copy, create derivative works of, distribute and sublicense the FreeType Project (in both source and object code forms) and derivative works thereof for any purpose; and to authorize others to exercise some or all of the rights granted herein, subject to the following conditions:

- o Redistribution of source code must retain this license file ('FTL.TXT') unaltered; any additions, deletions or changes to the original files must be clearly indicated in accompanying documentation. The copyright notices of the unaltered, original files must be preserved in all copies of source files.
- o Redistribution in binary form must provide a disclaimer that states that the software is based in part of the work of the FreeType Team, in the distribution documentation. We also encourage you to put an URL to the FreeType web page in your documentation, though this isn't mandatory.

These conditions apply to any software derived from or based on the FreeType Project, not just the unmodified files. If you use our work, you must acknowledge us. However, no fee need be paid to us.

### 3. Advertising

-----

Neither the FreeType authors and contributors nor you shall use the name of the other for commercial, advertising, or promotional purposes without specific prior written permission.

We suggest, but do not require, that you use one or more of the following phrases to refer to this software in your documentation or advertising materials: 'FreeType Project', 'FreeType Engine', 'FreeType library', or 'FreeType Distribution'.

As you have not signed this license, you are not required to accept it. However, as the FreeType Project is copyrighted

material, only this license, or another one contracted with the authors, grants you the right to use, distribute, and modify it. Therefore, by using, distributing, or modifying the FreeType Project, you indicate that you understand and accept all the terms of this license.

#### 4. Contacts

-----

There are two mailing lists related to FreeType:

- o `freetype@nongnu.org`

Discusses general use and applications of FreeType, as well as future and wanted additions to the library and distribution. If you are looking for support, start in this list if you haven't found anything to help you in the documentation.

- o `freetype-devel@nongnu.org`

Discusses bugs, as well as engine internals, design issues, specific licenses, porting, etc.

Our home page can be found at

`https://www.freetype.org`