



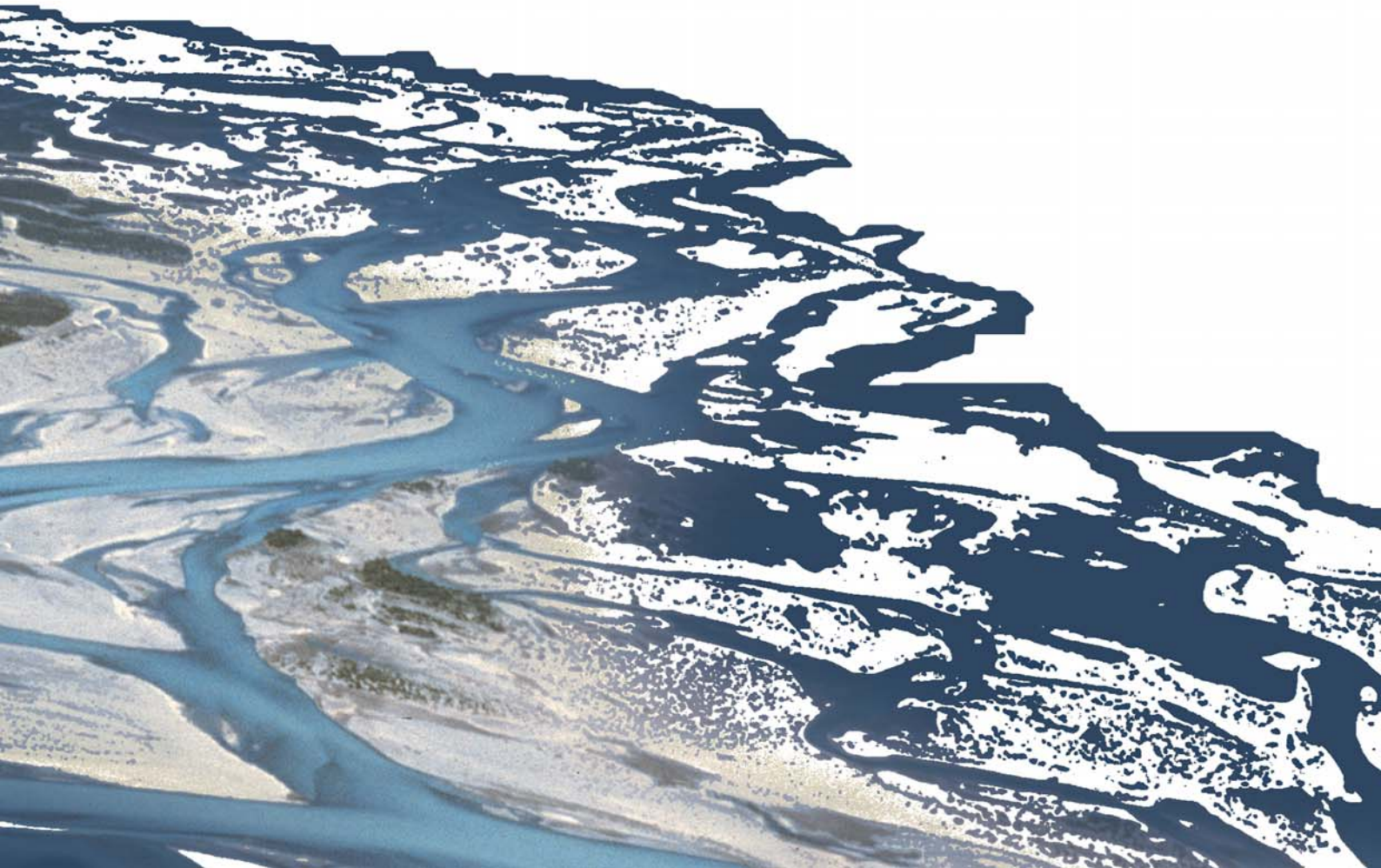
**BASEMENT**

**BASIC SIMULATION ENVIRONMENT  
FOR SIMULATION OF ENVIRONMENTAL FLOW  
AND NATURAL HAZRAD SIMULATION**

---

# **SYSTEM MANUALS**

**VERSION 3.0  
September 2019**





---

# Preamble

**VERSION 3.0.1**

*October 2019*

## Credits

### **Current Team Members**

*Software Development, Documentation and Test (alphabetical)*

Dr. P. Bacigaluppi, MSc. Aeronautical Eng.  
M. Bürgler, MSc. ETH Environmental Eng.  
F. Caponi, MSc. Environmental Eng.  
Dr. D. Conde, MSc. Civil Eng.  
E. Gerke, MSc. ETH Civil Eng.  
S. Kammerer, MSc. ETH Environmental Eng.  
Dr.techn. M. Weberndorfer, MSc.

*Scientific Board*

Prof. Dr. R. Boes, Director VAW, Member of Project Board  
Dr. A. Siviglia, MSc, Scientific Advisor  
Dr. D. Vanzo, MSc. Environmental Eng., Scientific Advisor  
Dr. D. Vetsch, Dipl. Ing. ETH, Project Director

### **Former Project Members**

See <https://www.basement.ethz.ch/people>

**Commissioned and co-financed by**

Swiss Federal Office for the Environment (FOEN)

**Contact**

Website: <https://www.basement.ethz.ch>

User forum: <https://people.ee.ethz.ch/~basement/forum>

© 2019 ETH Zurich / Laboratory of Hydraulics, Glaciology and Hydrology (VAW)

For list of contributors see <https://www.basement.ethz.ch>



Laboratory of Hydraulics,  
Hydrology and Glaciology



Eidgenössische Technische Hochschule Zürich  
Swiss Federal Institute of Technology Zurich

**Citation Advice**

*For System Manuals:*

Vetsch D., Siviglia A., Bacigaluppi P., Bürgler M., Caponi F., Conde D., Gerke E., Kammerer S., Koch A., Peter S., Vanzo D., Vonwiller L., Weberndorfer M. 2019. System Manuals of BASEMENT, Version 3.0. Laboratory of Hydraulics, Glaciology and Hydrology (VAW). ETH Zurich. Available from <https://www.basement.ethz.ch>. [date of access].

*For Website:*

BASEMENT – Basic Simulation Environment for Computation of Environmental Flow and Natural Hazard Simulation, 2019. <https://www.basement.ethz.ch>

*For Software:*

BASEMENT – Basic Simulation Environment for Computation of Environmental Flow and Natural Hazard Simulation. Version 3.0. © ETH Zurich, VAW, 2019.

---

# License

## End-User License Agreement (EULA)

THIS EULA IS INTENDED FOR COMMERCIAL AND NON-COMMERCIAL PURPOSES. FOR QUESTIONS RELATED TO THIS AGREEMENT PLEASE CONTACT: Dr. David Vetsch, [basement@ethz.ch](mailto:basement@ethz.ch)

This End-User License Agreement (“EULA”) is a legal agreement between you (“You”) (an individual or acting on behalf of a company) and ETH Zurich, Raemistrasse 101, 8092 Zurich (Switzerland) (“ETH Zurich”) for the binary software code of **BASEMENT** and associated media, and may include “online” or electronic documentation (“SOFTWARE”).

The SOFTWARE simulates water flow, sediment and scalar transport in rivers and according interaction in consideration of movable boundaries and morphological changes. Further information and description of the SOFTWARE is available here: <https://basement.ethz.ch/>

The SOFTWARE is protected by copyright laws. The SOFTWARE is hereby licensed, not sold.

In order to install and use the SOFTWARE, You must indicate agreement with the following terms and conditions by clicking “ACCEPT” at the end of this EULA during the installation process.

### 1 LICENSE GRANT

- (i) ETH Zurich hereby grants to You, and in case You are acting on behalf of a company also to the employees of such company, a free-of-charge, single, non-exclusive, world-wide, non-transferable, non-sublicensable right to install, execute and display the SOFTWARE on device(s) running a validly licensed copy of the operating system for which the SOFTWARE was designed. Such rights are granted for commercial and non-commercial purposes.
- (ii) With respect to electronic documents included with the SOFTWARE, You may make an unlimited number of copies (either in hardcopy or electronic form), provided that such copies shall be used only for internal purposes and are not republished or distributed to any third party.

## 2 USE OF RESULTS GENERATED BY THE SOFTWARE

You are allowed to use the content generated by the SOFTWARE (“SOFTWARE RESULTS”) for commercial and non-commercial purposes.

Note that any attribution (e.g. ETH Zurich logo) on the SOFTWARE RESULTS must be retained. You are not allowed to alter, cancel or fade, after a few seconds, such attribution.

## 3 THIRD PARTY CODE

The SOFTWARE may contain other program code from third parties. A list of other third party code and libraries used by this SOFTWARE is available here: <https://basement.ethz.ch/about/thirdpartysoftware>

Their license applies to such third party code and libraries contained herein. Refer to the above internet site for the licenses and copyrights.

## 4 DURATION OF LICENSE AND TERMINATION

This EULA enters into effect on the date of acceptance of this EULA by You. This EULA,

- (i) may be terminated by ETH Zurich at any time for any reason;
- (ii) will terminate automatically without notice from ETH Zurich if (a) You fail to comply with any term(s) of this EULA or (b) You refuse, after the notification in accordance with clause 10 (i), to accept the new EULA term and conditions provided by ETH Zurich;
- (iii) is terminated as soon as You cease to use the SOFTWARE and destroy all copies, full or partial, of the SOFTWARE;

Upon termination pursuant to (i) and (ii), you must cease all use of the SOFTWARE and destroy all copies, full or partial, of the SOFTWARE.

## 5 OBLIGATIONS OF YOU

- (i) You may not remove or alter any copyright notices on any and all copies of the SOFTWARE.
- (ii) You may not distribute or assign the SOFTWARE or any copy thereof to third parties. You may not rent, lease, sell, lend, transfer, redistribute, or sublicense the SOFTWARE to any third party.
- (iii) You may not reverse engineer, decompile or disassemble the SOFTWARE, except and only to the extent that such activity is expressly permitted by applicable law despite this limitation.
- (iv) You may not reproduce, modify or adapt the SOFTWARE, except and only to the extent that such activity is expressly permitted by applicable law despite this limitation.
- (v) You must comply with all applicable laws.

## **6 OWNERSHIP**

Except as expressly licensed to You in this EULA, ETH Zurich and its licensors retains all right, title, and interest in and to the SOFTWARE. All title and copyrights in and to the SOFTWARE (including but not limited to any images, photographs, animations, video, audio, music, text, and “applets” incorporated into the SOFTWARE), the accompanying materials, and any copies of the SOFTWARE are owned by ETH Zurich and its licensors. The SOFTWARE is protected by copyright laws. Therefore, You must treat the SOFTWARE like any other copyrighted material. All rights not expressly granted are reserved by ETH Zurich.

## **7 MAINTENANCE, SUPPORT, UPGRADES OR NEW RELEASES**

ETH Zurich has no obligation to provide maintenance, support, upgrades, new releases, enhancements or modifications and disclaims all costs associated with service, repair or correction of the SOFTWARE. If any supplemental software code is provided to You by ETH Zurich, this supplemental software code shall be considered part of the SOFTWARE and is subject to the terms and conditions of this EULA if not otherwise explicitly written. It is expressly acknowledged by You that no rights to receive maintenance, support, upgrades, new releases, enhancements or modifications may be derived from this EULA.

## **8 NO WARRANTY**

YOU EXPRESSLY ACKNOWLEDGE AND AGREE THAT USE OF THE SOFTWARE IS AT YOUR SOLE RISK AND THAT THE ENTIRE RISK AS TO SATISFACTORY QUALITY, PERFORMANCE, ACCURACY, AND EFFORT IS WITH YOU. TO THE MAXIMUM EXTENT PERMITTED BY APPLICABLE LAW, THE SOFTWARE AND ANY SERVICES PERFORMED OR PROVIDED BY THE SOFTWARE ARE PROVIDED “AS IS” AND “AS AVAILABLE”, WITH ALL FAULTS AND WITHOUT WARRANTY OF ANY KIND, AND ETH ZURICH HEREBY DISCLAIMS ALL WARRANTIES AND CONDITIONS WITH RESPECT TO THE SOFTWARE AND ANY SERVICES, EITHER EXPRESS, IMPLIED, OR STATUTORY, INCLUDING, BUT NOT LIMITED TO, THE IMPLIED WARRANTIES AND/OR CONDITIONS OF MERCHANTABILITY, OF SATISFACTORY QUALITY, OF FITNESS FOR A PARTICULAR PURPOSE, OF ACCURACY, OF QUIET ENJOYMENT, AND OF NON-INFRINGEMENT OF THIRD-PARTY RIGHTS. ETH ZURICH DOES NOT WARRANT AGAINST INTERFERENCE WITH YOUR ENJOYMENT OF THE SOFTWARE, THAT THE FUNCTIONS CONTAINED IN OR SERVICES PERFORMED OR PROVIDED BY THE SOFTWARE WILL MEET YOUR REQUIREMENTS, THAT THE OPERATION OF THE SOFTWARE OR SERVICES WILL BE UNINTERRUPTED OR ERROR-FREE, OR THAT DEFECTS IN THE SOFTWARE OR SERVICES WILL BE CORRECTED. NO ORAL OR WRITTEN INFORMATION OR ADVICE GIVEN BY ETH ZURICH OR ITS AUTHORIZED REPRESENTATIVE SHALL CREATE A WARRANTY. SHOULD THE SOFTWARE OR SERVICES PROVE DEFECTIVE, YOU ASSUME THE ENTIRE COST OF ALL NECESSARY SERVICING, REPAIR, OR CORRECTION. SOME JURISDICTIONS DO NOT ALLOW THE EXCLUSION OF IMPLIED WARRANTIES OR LIMITATIONS ON APPLICABLE STATUTORY RIGHTS OF A CONSUMER, SO THE ABOVE EXCLUSION AND LIMITATIONS MAY NOT APPLY TO YOU.

## **9 LIABILITY**

In no event shall ETH Zurich be liable for any damages (including, without limitation, lost profits, business interruption, or lost information) arising from the use of or inability

to use the SOFTWARE through You or the employees of the company You are legally representing. In no event will ETH Zurich be liable for loss of data or for indirect, special, incidental, consequential (including loss of profit), or other damages based in contract, tort or otherwise.

The above limitation of liability shall not be construed to amend or limit any party's statutory liability.

## 10 GENERAL PROVISIONS

- (i) ETH Zurich reserves the right to change the terms and conditions of this EULA at any point in time. In such event, ETH Zurich will notify You in due time of the changes to the terms of the EULA.
- (ii) Rights and duties derived from this EULA shall not be transferred to third parties without the written acceptance of the ETH Zurich.
- (iii) You shall not infer from this EULA any other rights, including licenses, than those that are explicitly stated herein.
- (iv) This EULA shall exclusively be governed by and interpreted in accordance with the laws of Switzerland, without reference to its conflict of laws principles. The exclusive place of jurisdiction is Zurich (Switzerland).

## 11 ACKNOWLEDGMENT

You acknowledge that you have read this EULA, understand it, and had an opportunity to seek independent legal advice prior to agreeing to it. In consideration of ETH Zurich agreeing to provide the SOFTWARE, You agree to be bound by the terms and conditions of this EULA. You further agree that it is the complete and exclusive statement of the agreement between you and ETH Zurich, which supersedes any proposal or prior agreement, oral or written, and any other communication between you and ETH Zurich relating to the subject of this EULA.

### **Notice:**

Third party software copyright notices and third party software licenses can be found in the appendix.



BASIC SIMULATION ENVIRONMENT  
FOR SIMULATION OF ENVIRONMENTAL FLOW  
AND NATURAL HAZRAD SIMULATION

---

# TUTORIALS & TEST CASES

VERSION 3.0  
September 2019



**BASEMENT**



# Contents

<b>1</b>	<b>Tutorials</b>	<b>3</b>
1.1	Hydrodynamics and sediment transport at the river Flaz . . . . .	3
1.1.1	Introduction . . . . .	3
1.1.2	Computational mesh . . . . .	3
1.1.3	Hydraulics . . . . .	3
1.1.3.1	Set up the configuration file model.json . . . . .	4
1.1.3.2	Set up the configuration file simulation.json . . . . .	6
1.1.3.3	Set up the configuration file results.json . . . . .	7
1.1.3.4	Steady flow simulation . . . . .	7
1.1.3.5	Model calibration . . . . .	8
1.1.3.6	Unsteady flow simulation . . . . .	8
1.1.4	Morphology . . . . .	9
1.1.4.1	Set up the configuration file model.json . . . . .	9
1.1.4.2	Set up the configuration file simulation.json . . . . .	12
1.1.4.3	Results . . . . .	12
1.2	Post-processing . . . . .	12
1.2.1	ParaView . . . . .	13
1.2.2	Extract data from result file . . . . .	13
<b>2</b>	<b>Test cases</b>	<b>15</b>
2.1	Introduction and Backends . . . . .	15
2.1.1	Introduction . . . . .	15
2.1.2	Backends . . . . .	15
2.2	Circular dam break . . . . .	16
2.2.1	Description . . . . .	16
2.2.2	Geometry and initial conditions . . . . .	16
2.2.3	Results . . . . .	17
2.2.4	Performance . . . . .	20
2.2.4.1	Ubuntu . . . . .	20
2.2.4.2	Windows . . . . .	21
2.3	Conical dune . . . . .	24
2.3.1	Description . . . . .	24
2.3.2	Geometry and initial conditions . . . . .	24
2.3.3	Results . . . . .	25
2.3.4	Performance . . . . .	28
<b>3</b>	<b>References</b>	<b>31</b>



---

## Tutorials

### 1.1 Hydrodynamics and sediment transport at the river Flaz

#### 1.1.1 Introduction

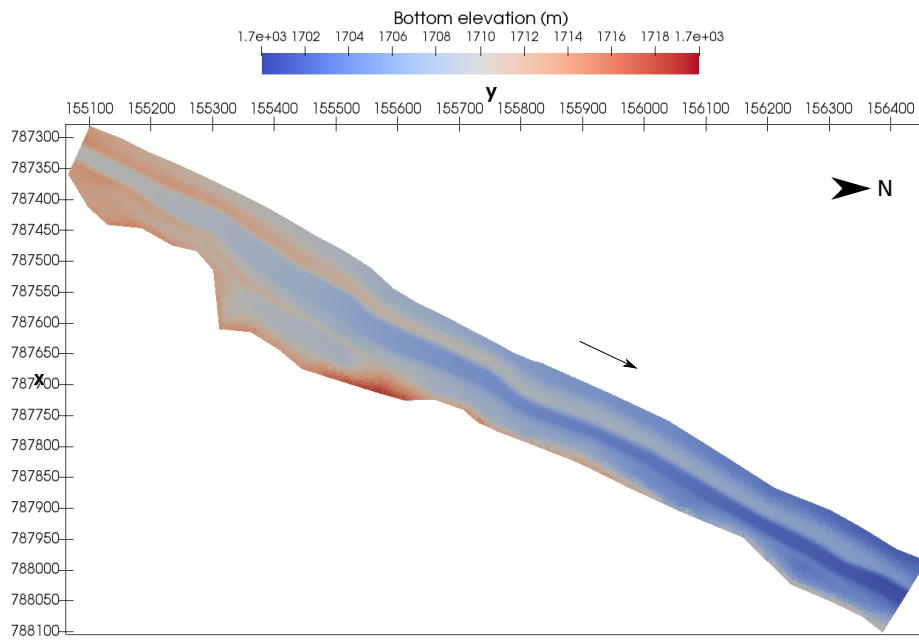
The river Flaz is located in the canton Graubünden in Switzerland. A reach of 1.5 km long is taken as example for this tutorial. The reach contains a widening section created to protect the village of Samadan from flood event. The aim of this tutorial is to show the setup of the three configuration files for the numerical simulation with BASEMENT. First, a hydraulic simulation is performed to obtain a calibrated model at steady state. Then a morphological simulation is performed adding the morphological part to the result of the hydraulic simulation.

#### 1.1.2 Computational mesh

The computational mesh of the Flaz is imported from the tutorial of BASEMENT version 2.8. The 2dm file has been modified as explain in the pre-processing tutorial for small meshes in the User manual. There are two stringdefs for the inflow and outflow boundaries. The mesh has 14'457 cells, 7'446 vertices and the interpolation method “weighted” is used to convert the mesh from version 2.8 to a 3.0 compatible computational mesh. Figure 1.1 shows the bottom elevation of the river Flaz used in this tutorial.

#### 1.1.3 Hydraulics

The configurations files (model.json, simulation.json and results.json) can be created and modified with the graphical user interface (GUI) or any text editor. The configuration files are saved in one folder and the simulation will automatically generate a new folder called “run” which contains the output.



**Figure 1.1** Planar view of the initial bottom elevation of the river Flaz

### 1.1.3.1 Set up the configuration file model.json

The configuration file model.json for a hydrodynamic simulation has the following structure:

```
{
  "SETUP": {
    "simulation_name": "Flaz_steady_state",
    "DOMAIN": {
      "PHYSICAL_PROPERTIES": {...},
      "BASEPLANE_2D": {
        "GEOMETRY": {...},
        "HYDRAULICS": {
          "PARAMETER": {...},
          "FRICTION": {...},
          "BOUNDARY": {...},
          "INITIAL": {...}
        }
      }
    }
  }
}
```

The blocks `PHYSICAL_PROPERTIES` and `BASEPLANE_2D` are mandatory. The physical property is the gravity and the components of the `BASEPLANE_2D` contain information about the domain (`GEOMETRY`) and the simulation type (`HYDRAULICS`).

```
"PHYSICAL_PROPERTIES": {
  "gravity": 9.81
}
```

The GEOMETRY part contains the link to the mesh file and different subsections as the interpolation method, a list of STRINGDEF for boundary conditions and a list of REGIONDEF to assign the friction, external sources and different interpolation methods.

```
"GEOMETRY": {
    "mesh_file": "Flaz_mesh.2dm",
    "INTERPOLATION": {
        "method": "weighted"
    },
    "STRINGDEF": [...],
    "REGIONDEF": [...]
}

"STRINGDEF": [
    { "name": "Inflow",
      "upstream_direction": "left"},
    { "name": "Outflow",
      "upstream_direction": "left"}
],

"REGIONDEF": [
    {
        "name": "one",
        "index": [1] },
    {
        "name": "two",
        "index": [2] },
    {
        "name": "three",
        "index": [3] },
    ...
]
```

The HYDRAULICS block contains the subsections PARAMETER for the hydraulic simulation only, FRICTION for each region, BOUNDARY for the flow conditions and INITIAL for the condition at time t=0.0.

```
"PARAMETER": {
    "CFL": 0.95,
    "minimum_water_depth": 0.002,
    "fluid_density": 1000.0,
    "max_time_step": 100
}

"FRICTION": {
    "type": "strickler",
    "default_friction": 30,
    "regions": [
        {"region_name": "one",
         "friction": 28.0},
    ]
}
```

```

        {"region_name": "two",
         "friction": 30.0},
        {"region_name": "three",
         "friction": 35.0},
        ...
    ]
}

"BOUNDARY":{
    "STANDARD": [
        {"name": "Inflow",
         "string_name": "Inflow",
         "type": "uniform_in",
         "discharge_file": "Inflow_stationary.txt",
         "slope": 0.02},
        {"name": "Outflow",
         "string_name": "Outflow",
         "type": "uniform_out",
         "slope": 0.02}
    ]
}

"INITIAL":{
    "type": "dry"
}

```

The hydrograph is defined constant in a file “Inflow\_stationary.txt”, where the time in seconds (left) and discharge in  $m^3/s$  (right) is indicated.

```

0.0, 50.0
3600.0, 50.0

```

### 1.1.3.2 Set up the configuration file simulation.json

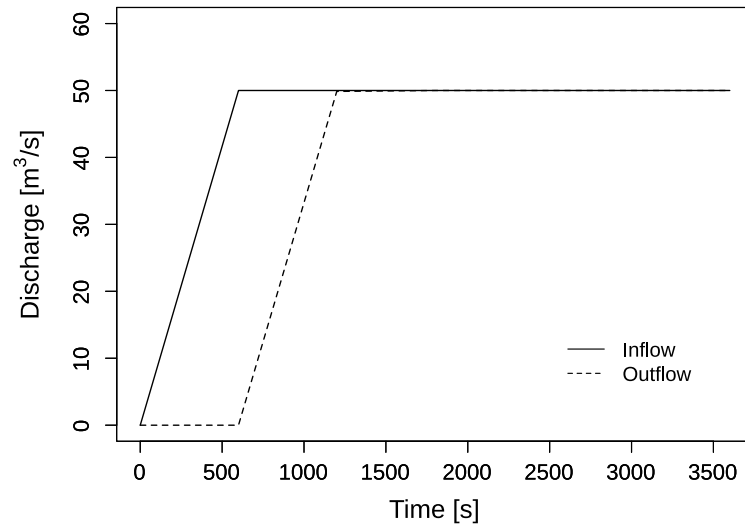
The configuration file simulation.json defines the simulation time parameters (seconds) in the block TIME and the different output types inside the OUTPUT block.

```

{
  "SIMULATION":{
    "TIME": {
      "start": 0.0,
      "end": 3600,
      "out": 600
    },
    "OUTPUT": [
      "water_surface",
      "flow_velocity_abs",
      "ns_hyd_discharge",

```





*Figure 1.2 Inflow and outflow hydrograph at boundaries*

```

    "bottom_elevation",
    "spec_discharge",
    "water_depth"
  ]
}
}

```

### 1.1.3.3 Set up the configuration file results.json

The configuration file results.json defines the output format in the block EXPORT. Currently, xdmf is the only output format available.

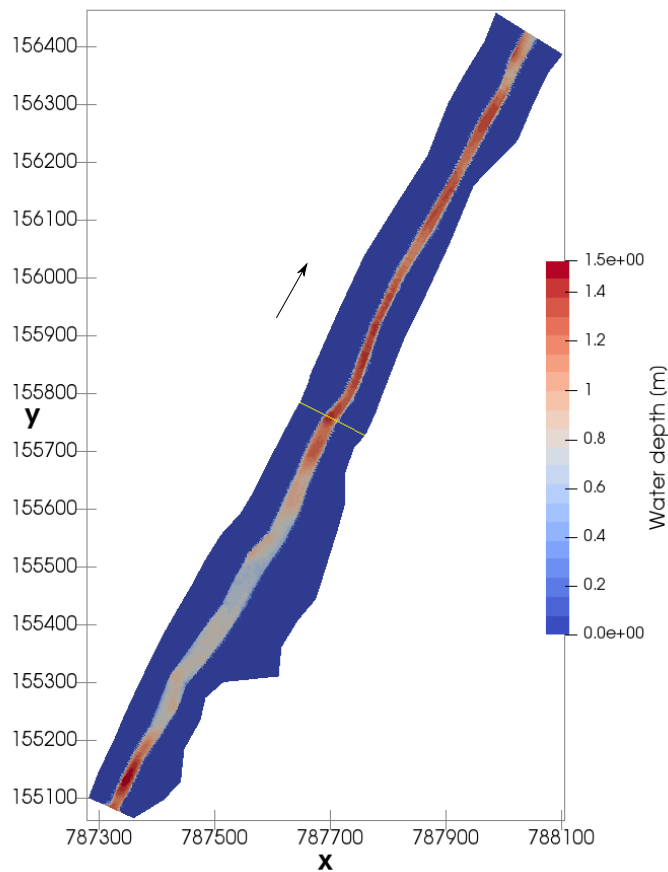
```

{
  "RESULTS": {
    "EXPORT": [
      {"format": "xdmf"}
    ]
  }
}

```

### 1.1.3.4 Steady flow simulation

The simulation results are stored inside the results.h5 binary. By calling the python script, the discharge values at boundaries are extracted and stored in the Discharge.csv file, where the rows are the time steps and the columns represents the stringdef in their definition order (inside the .2dm file). The steady state is reached after 1200 seconds (Figure 1.2).



*Figure 1.3* Water depth at the end of the steady flow simulation ( $t=3600$  s) with the cross section location (yellow line)

### 1.1.3.5 Model calibration

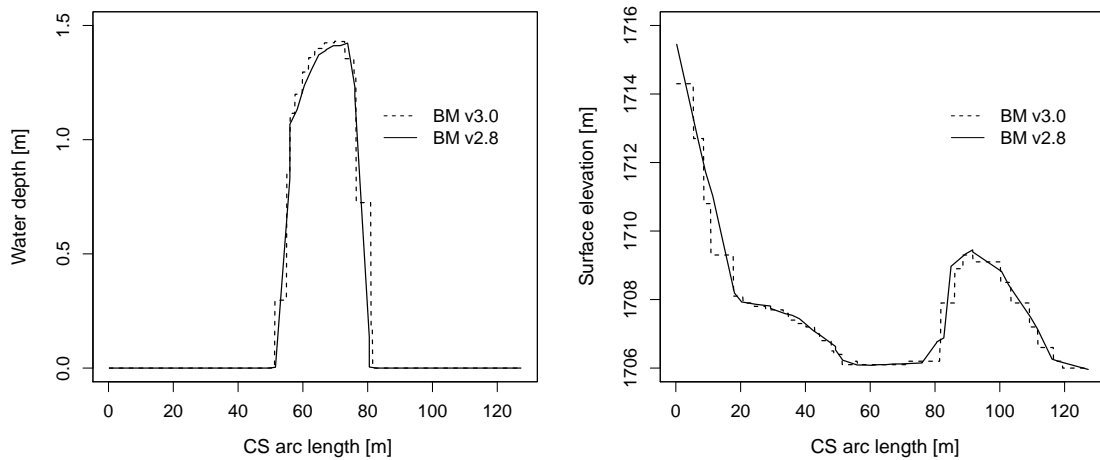
The calibration of the friction value is done by comparing the water surface elevation between BASEMENT version 3.0 and version 2.8 at a cross section located in the middle of the channel (Figure 1.3). The water surface elevation and the water depth values along the cross section were obtained using the software ParaView.

The resulting water depth and water surface elevation are compared in Figure 1.4. The steady flow simulation of BASEMENT version 3.0 provides similar results to those obtained with BASEMENT version 2.8. There is no need to modify the friction value defined in Section 1.1.3.1.

### 1.1.3.6 Unsteady flow simulation

The hydrograph based on the flood event of July 2004 provides unsteady flow conditions for the numerical simulation. The results of the steady flow simulation are stored in the binary `Flaz_steady_state_results.h5` inside the `run/` folder and taken as initial state. The other parameters defined in Section 1.1.3.1 don't change, except for the boundary block where the new discharge file (`Inflow_transient.txt`) replaces the stationary hydrograph. The initial block:

```
"INITIAL":{
```



**Figure 1.4** Cross sectional view of the water depth and surface elevation facing the opposite flow direction at the end of the steady flow simulation ( $t=3600$  s)

```

        "type": "continue",
        "file": "../run/Flaz_steady_state_results",
        "time": 3000.0
    }

```

The running time in the configuration file `simulation.json` is increased to the last value of the discharge file (`Inflow_transient.txt`). A higher “end” value will take the last discharge value written on the hydrograph to run the simulation. The starting time corresponds to the smallest time value of the discharge file `Inflow_transient.txt`.

```

"TIME": {
    "start": 0.0,
    "end": 82000,
    "out": 2000
}

```

After changing the discharge file, modifying the initial block in the setup and the time of the simulation, the model is ready to proceed the numerical simulation.

## 1.1.4 Morphology

### 1.1.4.1 Set up the configuration file `model.json`

The unsteady flow simulation is now converted into a morphodynamic simulation with a morphology block and starting from the results of the steady flow simulation. The inflow hydrograph and the initial blocks are the same as described in Section 1.1.3.6. Additionally, the block morphology is defined inside the `model.json` file with the following structure

```
{
```

```

"SETUP":{
  "simulation_name":"Flaz_unsteady_morph",
  "DOMAIN": {
    "PHYSICAL_PROPERTIES": {...},
    "BASEPLANE_2D": {
      "GEOMETRY": {...},
      "HYDRAULICS": {...},
      "MORPHOLOGY": {
        "INITIAL":{...},
        "PARAMETER": {...},
        "BEDMATERIAL": {...},
        "BEDLOAD": {...}
      }
    }
  }
}

```

Inside the morphology block, the initial conditions look like:

```

"INITIAL":{
  "type": "mesh"
}

```

The morphology parameters defines the density of sediments, the porosity and the time at which the morphodynamic simulation starts.

```

"PARAMETER": {
  "morphodynamic_start": 0.0,
  "sediment_porosity": 0.4,
  "sediment_density" : 2650.0
}

```

The bed material is composed of uniform grains with one diameter (m). Fixed bed elevations are assigned to different regions to prevent a high erosion. The erosion is unlimited if the fix bed is not defined.

```

"BEDMATERIAL": {
  "GRAIN_CLASS": {
    "diameters": [0.050]
  },
  "FIXED_BED": {
    "type": "region_defined",
    "correction_accuracy": 0.0,
    "max_iteration": 300,
    "regions": [
      {"region_name": "one",
       "z_rel": -0.8},
    ]
  }
}

```

```

        {"region_name": "two",
         "z_rel": 0.0},
        {"region_name": "three",
         "z_rel": 0.0},
        {"region_name": "four",
         "z_rel": -2.0},
        {"region_name": "five",
         "z_rel": 0.0},
        {"region_name": "six",
         "z_rel": -2.0},
        {"region_name": "seven",
         "z_rel": -2.0},
        {"region_name": "eight",
         "z_rel": 0.0},
        {"region_name": "nine",
         "z_rel": 0.0},
        {"region_name": "ten",
         "z_rel": 0.0},
        {"region_name": "eleven",
         "z_rel": -0.2},
        {"region_name": "twelve",
         "z_rel": -0.4}
    ]
}
}

```

In the bedload block, the bedload transport formula is chosen, the lateral bed slope according to the formula of Ikeda is defined as well as the morphological boundary conditions. The boundary condition is defined as `transport_capacity` at the inflow boundary. The value of the sediment flux is averaged over the stringdef length and equally distributed (same value) among the edges. The outflow boundary has been reduced to the bed width composed of 6 nodes only. Therefore, the nodes located on the channel levee of the outflowing stringdefs have been removed from the `.2dm` file (computational mesh) manually using a text editor. The stringdef definition remains unchanged and the outflow boundary is defined as `equilibrium_out` with the reference bottom elevation set to 1700.68 *m*.

```

"BEDLOAD": {
    "FORMULA": {
        "type": "MPM_like",
        "factor": 1.0,
        "coefficient": 3.2,
        "exponent": 1.6,
        "critical_value": 0.047
    },
    "DIRECTION": {
        "IKEDA": {
            "factor": 1.5
        }
    },
}

```

```

    "BOUNDARY":{
      "STANDARD": [
        {
          "name": "inflow_MOR",
          "string_name": "Inflow",
          "type": "transport_capacity",
          "boundary_factor": 0.8
        },
        {
          "name": "outflow_MOR",
          "string_name": "Outflow",
          "type": "equilibrium_out",
          "reference_bed_elevation": 1700.68
        }
      ]
    }
  }

```

#### 1.1.4.2 Set up the configuration file simulation.json

The simulation time defined in the simulation.json file is the same as for the unsteady flow in the hydraulics simulation and two additional outputs are defined.

```

{
  "OUTPUT": [
    "...",
    "water_depth",
    "delta_z",
    "ns_mor_discharge"
  ]
}

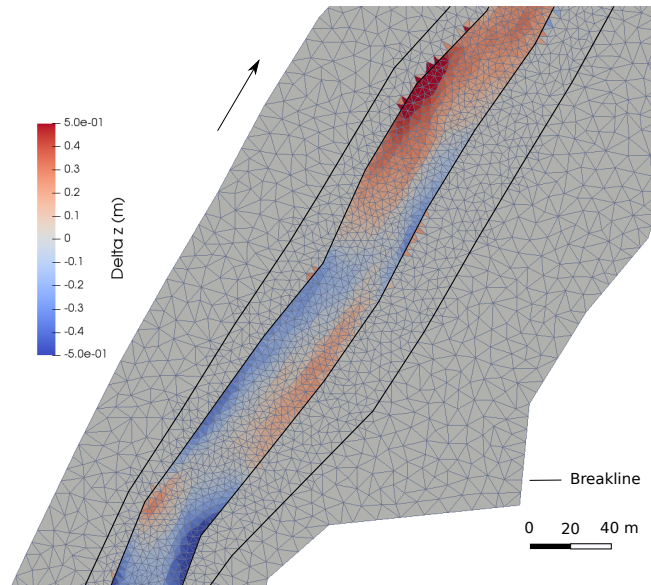
```

#### 1.1.4.3 Results

The morphological changes of the river bed are observed on Figure 1.5. The software ParaView was used for the post-processing of the output file (.xdmf).

## 1.2 Post-processing

BASEMENT version 3.x simulation results are generated inside the scenario directory and stored in binary format “.h5”. These results are converted into specific output type that can be visualized and modified by external softwares. Two types of output are available, “.xdmf” for the values calculated over the cells and “.csv” for the values calculated at stringdefs. The “.xdmf” output type is defined in the configuration file results.json (Section 1.1.3.3). The delimited text file (.csv) is generated by calling the python script “BMv3NodestringResults.py”.



**Figure 1.5** Planar view of the widening part of the river Flaz with the change in bed elevation ( $\Delta z$ ) due to the flood event at the end of the morphodynamic simulation ( $t=84'000$  s)

### 1.2.1 ParaView

The free and open source application ParaView is used to generate 2D views of BASEMENT version 3.x simulation results. The .xdmf file can be imported into ParaView to visualize the output data calculated over the cells like for example the water\_depth, bottom\_elevation and flow\_velocity\_abs.

Figure 1.5 gives an example of post-processing using ParaView for the morphological changes ( $\Delta z$ ). A tutorial of the software ParaView is given in section 2.3 of BASEMENT 2.8 Tutorial for 3D visualization of the results. Be careful, only 2D visualization is available in ParaView for the output of BASEMENT version 3.x. Therefore, only a planar view of the results is available (see Figure 1.5).

### 1.2.2 Extract data from result file

This tutorial shows how to extract values from the stringdefs, i.e. boundaries to obtain the results of Figure 1.2. The python script BMv3NodestringResults.py can be downloaded from [www.basement.ethz.ch](http://www.basement.ethz.ch) and should be saved inside the scenario directory generated. The python script will read the stringdef data stored inside the \_results.h5 file and convert them into a delimited text format (.csv). The data calculated at the stringdef are the discharge, the mean water surface elevation (wse), the wetted area, the mean bottom elevation, reference elevation, wetted geometric length, total water volume stored in cells of the stringdef, total conveyance of cells, the morphological flux and the bedload transport.

To generate the .csv text file:

1. Save the BMv3NodestringResults.py file inside the scenario directory
2. Open a command window

3. Change folder and go inside the scenario directory
4. Call the python script with

```
$ python BMv3NodestringResults.py
```

As output, a `result.csv`, `discharge.csv` and `time step.csv` are generated. The `discharge.csv` provides the discharge value for each stringdef (columns) listed in the same order of appearance as in the `.2dm` file. The rows stand for the simulation time step at which the output are generated (first row is the initial time  $t= 0.0$  s). The number of time step is given as a list in the `time step.csv` file. Every available result of the stringdefs is defined in the header of the `results.csv` file, where the rows correspond to the list of stringdefs in the same order of appearance as in the `.2dm` file and for every time step.



---

## Test cases

### 2.1 Introduction and Backends

#### 2.1.1 Introduction

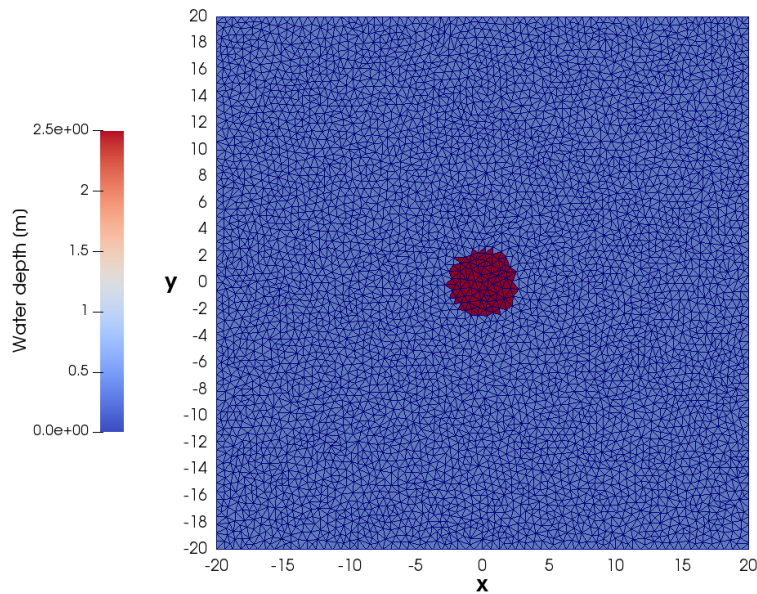
The test cases present well-defined hydro- and morphodynamic numerical simulations that are used to assess the performance and accuracy of the simulations with BASEMENT version 3.0. The test cases have an analytical solution to which the numerical solution is compared in order to evaluate the accuracy of the results. The numerical simulations are executed on different backends that influence the performance of the simulation.

#### 2.1.2 Backends

Different backends are used to execute the simulations of the test cases. A central processing unit (CPU) with a sequential application on 1 core, CPU with parallel applications (OpenMP) on 2, 4, 8, 16 and 32 cores, double graphic processing units (GPU) with a compute unified device architecture (CUDA) running on 1 core for low application programming interface (API) and finally single GPUs for high API. The features of the GPU backends are shown in Table 2.1.

**Table 2.1** Features of the GPU hardware used for the numerical simulations

Card	K20	P100	GTX 1080 Ti	GTX 1070 Ti	GTX 1050 Ti	Quadro P620
Memory [GB]	5	12	11	8	4	2
Architecture	Kepler	Pascal	Pascal	Pascal	Pascal	Pascal
Bandwidth [GB/s]	208	549	484	256	112	80
CUDA cores	2496	3584	3584	2432	768	512



**Figure 2.1** Computational domain of the circular dam break (10k cells) with initial water depth.

## 2.2 Circular dam break

### 2.2.1 Description

The circular dam break problem represents a 2D Riemann problem based on the sudden collapse of an idealized circular dam over a horizontal bottom. The aim is to evaluate the ability of the model to solve the wave propagation, i.e. the complex interaction of shock and rarefaction waves induced by a dam break event. The results are quantitatively compared with a reference solution obtained as described in Toro (2001).

### 2.2.2 Geometry and initial conditions

The computational domain is a squared area of size 40 x 40 m and composed of unstructured triangular cells. The circular dam has a diameter of 5 m and is located at the center of the computational domain ( $x = 0$ ,  $y = 0$ ). Initially, the water is at rest and the depth inside the circular dam is 2.5 m and 0.5 m over the surrounding domain. No friction and no slope (horizontal bottom) is considered and the CFL number is set to 0.9. As the simulation starts (time 0.0 s), the dam is removed and the subsequent wave pattern is observed during 4.7 s, after which the simulation stops. Different mesh resolutions are used in the test case, the smallest mesh resolution contains exactly 9'927 cells (10k), the second 49'450 cells (50k), the third 99'416 cells (100k), the fourth 497'092 cells (500k) and the finest mesh resolution contains 994'092 cells (1000k). Figure 2.1 shows the initial conditions of the circular dam break with the computational domain of 10k cells.

### 2.2.3 Results

The evolution of the water depth is described along a reference cross-section located between  $(x = -20, y = 0)$  and  $(x = 20, y = 0)$ , see Figure 2.2. The reference solution is obtained from Toro (2001) using the exact Riemann solver on a mesh of about 1000 cells. After the collapse of the circular dam at  $t = 0.0$  s, the primary shock wave propagates outwards. At the same time, a rarefaction wave that propagates towards the center of the dam is observed. The rarefaction wave will implode at the grid center before  $t=0.4$  s and then travel in outward direction inducing a rapid drop of the water elevation which will reach a level below the initial outer water surface elevation ( $t=1.4$  s) in the center area. The primary shock wave travels outwards with decreasing strength while a secondary shock wave develops in opposite direction towards the center and finally generates a jump in the water depth at the grid center ( $t=4.7$  s).

The results on Figure 2.2 show how the solution obtained with BASEMENT version 3.0 (first order HLLC method) correctly converges to the reference solution as the grid is refined. The cylindrical symmetry of the wave propagation in BASEMENT is maintained, even if water surface modulations are observed along the primary shock wave.

The relative error is computed for the water depth ( $e_H$ ) and speed ( $e_u$ ) using eq. 2.1 and for various reference elevations. The result is displayed in Figure 2.3.

$$e_X = \frac{|X_{BM} - X_{ref}|}{X_{ref}} \quad (2.1)$$

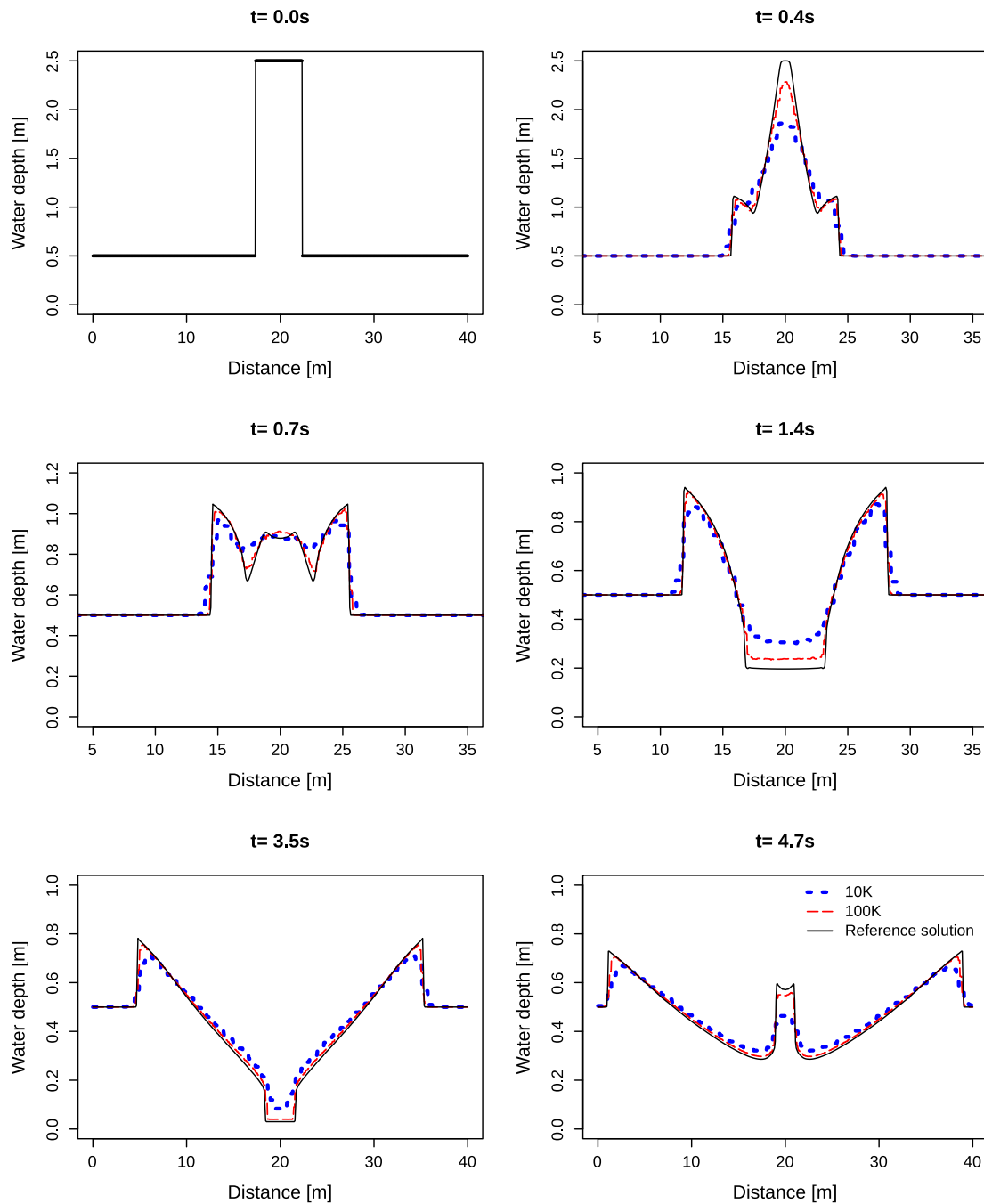
Where  $X$  stands either for the water surface elevation  $H$  or the velocity  $u$  with  $X_{BM}$  the result of the simulation with BASEMENT and  $X_{ref}$  the reference value of Toro (2001).

The relative  $L^2$  norm error (eq. 2.2, e.g Vanzo et al. (2016)) is calculated for each mesh size using the water surface elevation of the simulation result of BASEMENT ( $H_{BM}$ ) and the references solution ( $H_{ref}$ ) of Toro (2001). The result is shown on Table 2.2. The relative norm error decreases for finer meshes.

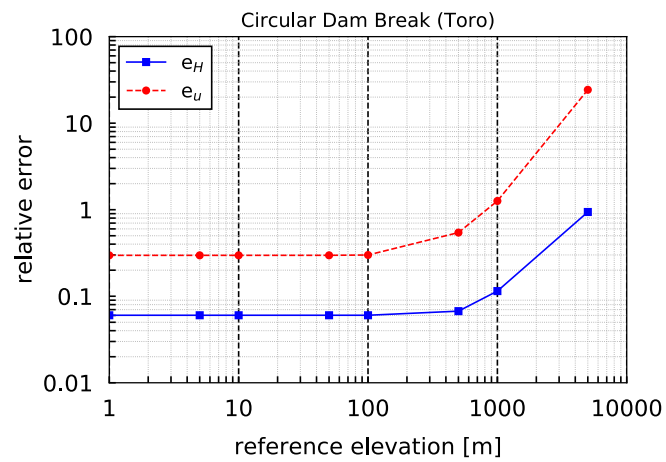
$$L^2 = \sqrt{\frac{\sum_{i=1}^N (H_{ref}(i) - H_{BM}(i))^2}{\sum_{i=1}^N H_{ref}(i)^2}} \quad (2.2)$$

**Table 2.2** Relative  $L^2$  norm error of the water surface elevation  $H$  compared to the reference solution of Toro (2001) at  $t=4.7$  s.

	10k	50k	100k	500k	1000k
$L^2$	0.1134	0.0523	0.0453	0.0184	0.0145



**Figure 2.2** Snapshots of the water depth evolution along the reference cross-section. Comparison between BASEMENT simulations with a computational grid of 10k cells, 100k cells and the reference solution of Toro (2001).



*Figure 2.3* Relative error compared to the reference solution of Toro (2001)

## 2.2.4 Performance

The performance is measured as speedup  $S$ , which is defined as the ratio between the reference execution time  $T_1$  (Xeon 1) and execution time of parallel or GPU backends  $T_N$ . The speedup states how much faster the parallel and GPU applications run compared to the reference execution time. The actual speedup is determined by several factors whose influences largely depend on size and type of the simulation.

### 2.2.4.1 Ubuntu

Tables 2.3, 2.4 and 2.5 contain the execution time and speedup of all the simulations performed on different backends under Linux. The backends belong to two categories, either in Central Processor Units (CPU) or Graphics Processor Units (GPU). The CPU run simulations exclusively with a double precision, while GPU can perform simulations with a single or double precision. More details are explained in Section 2.1.2.

**Table 2.3** Computational time (s) and speedup (in parentheses) of the circular dam break simulations for CPU simulations under Ubuntu 16.04 (Intel Xeon Gold 6154, 3.00GHz)

Mesh size	Xeon 1 Double	Xeon 2 Double	Xeon 4 Double	Xeon 8 Double	Xeon 16 Double	Xeon 32 Double
10k	0.36	0.19 (1.89x)	0.11 (3.27x)	0.06 (6.00x)	0.04 (9.00x)	0.04 (9.00x)
50k	3.98	2.08 (1.91x)	1.13 (3.52x)	0.61 (6.52x)	0.34 (11.71x)	0.22 (18.09x)
100k	11.48	5.98 (1.92x)	3.19 (3.60x)	1.68 (6.83x)	0.89 (12.90x)	0.52 (22.08x)
500k	137.57	70.18 (1.96x)	36.76 (3.74x)	18.82 (7.31x)	9.57 (14.38x)	4.93 (27.90x)
1000k	409.59	200.36 (1.96x)	108.98 (3.76x)	55.55 (7.37x)	28.15 (14.55x)	14.38 (28.48x)

**Table 2.4** Computational time (s) and speedup (in parentheses) of the circular dam break simulations for GPU simulations

Mesh size	Xeon 1 Double	Quadro P620 Single	Quadro P620 Double	Tesla K20 Single	Tesla K20 Double	Tesla P100 Single	Tesla P100 Double
10k	0.36	0.05 (7.20x)	0.06 (6.00x)	0.04 (9.00x)	0.04 (9.00x)	0.04 (9.00x)	0.04 (9.00x)
50k	3.98	0.28 (14.21x)	0.48 (8.29x)	0.16 (24.88x)	0.21 (18.95x)	0.18 (22.11x)	0.19 (20.95x)

Mesh size	Xeon 1 Double	Quadro	Quadro	Tesla	Tesla	Tesla	Tesla
		P620 Single	P620 Double	K20 Single	K20 Double	P100 Single	P100 Double
100k	11.48	0.66 (17.39x)	1.24 (9.26x)	0.34 (33.76x)	0.46 (24.96x)	0.36 (31.89x)	0.39 (29.44x)
500k	137.57	5.83 (23.60x)	12.94 (10.63x)	2.29 (60.07x)	3.89 (35.37x)	2.17 (63.40x)	2.58 (53.32x)
1000k	409.59	16.39 (24.99x)	37.32 (10.98x)	5.84 (70.14x)	10.56 (38.79x)	5.11 (80.15x)	6.35 (64.50x)

**Table 2.5** Computational time (s) and speedup (in parentheses) of the circular dam break simulations for GPU simulations

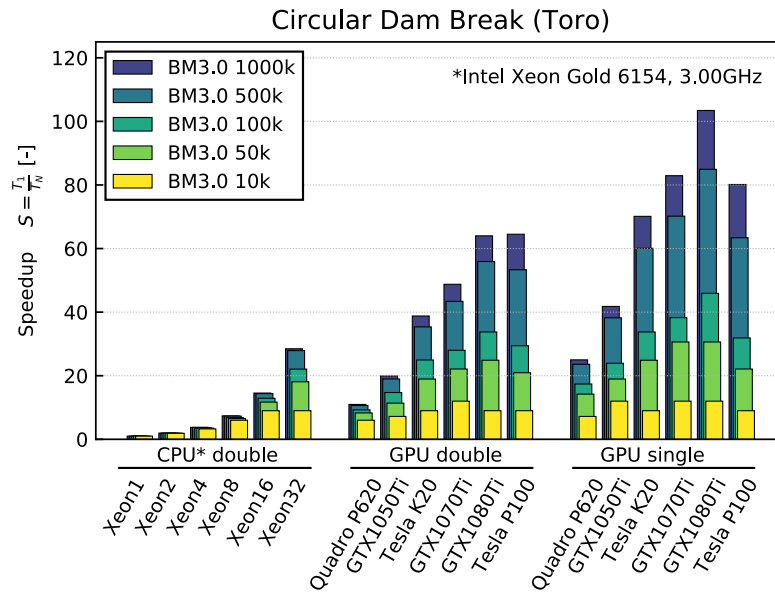
Mesh size	Xeon 1 Double	GTX	GTX	GTX	GTX	GTX	GTX
		1050 Single	1050 Double	1070 Single	1070 Double	1080 Single	1080 Double
10k	0.36	0.03 (12.00x)	0.05 (7.20x)	0.03 (12.00x)	0.03 (12.00x)	0.03 (12.00x)	0.04 (9.00x)
50k	3.98	0.21 (18.95x)	0.35 (11.37x)	0.13 (30.62x)	0.18 (22.11x)	0.13 (30.62x)	0.16 (24.88x)
100k	11.48	0.48 (23.92x)	0.78 (14.72x)	0.30 (38.27x)	0.41 (28.00x)	0.25 (45.92x)	0.34 (33.76x)
500k	137.57	3.60 (38.21x)	7.25 (18.98x)	1.96 (70.19x)	3.17 (43.40x)	1.62 (84.92x)	2.46 (55.92x)
1000k	409.59	9.80 (41.79x)	20.57 (19.91x)	4.94 (82.91x)	8.40 (48.76x)	3.96 (103.43x)	6.40 (64.00x)

Figure 2.4 shows the speedup achieved by the different backends, where the biggest time improvement is observed for the GPU single precision. The speedup increases particularly for meshes with a fine resolution (500K and 1000K) using GPU.

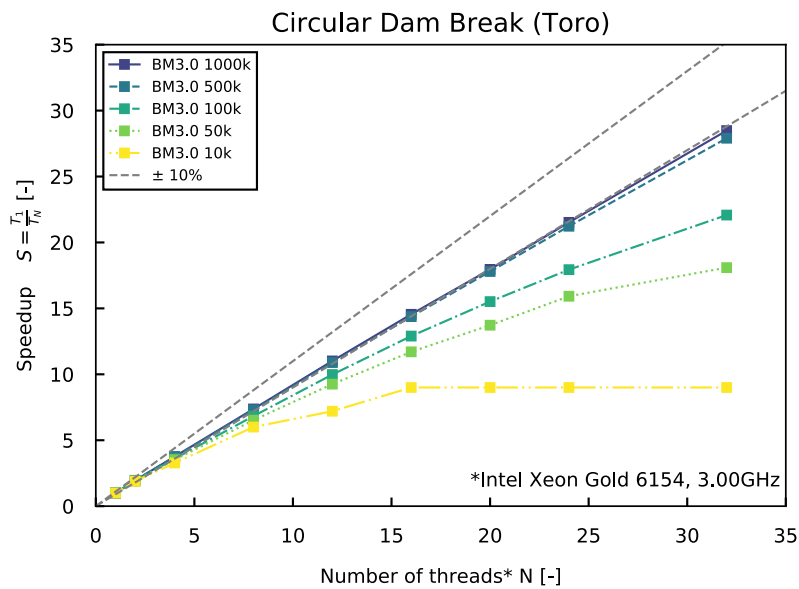
Figure 2.5 compares the speedup with the number of threads (CPU) between the different mesh resolutions. The simulations were performed using the CPU backend type Intel Xeon Gold 6154 (3.00GHz). The speedup is more effective for meshes with a fine resolution than for those of coarse resolution, where the increase in number of cores leads to a plateau.

#### 2.2.4.2 Windows

Tables 2.6 contains the execution time and speedup of all the simulations performed on different backends under Windows. The simulations were run on Intel Xeon E5-2667 v3, 3.20GHz processors with a double precision.

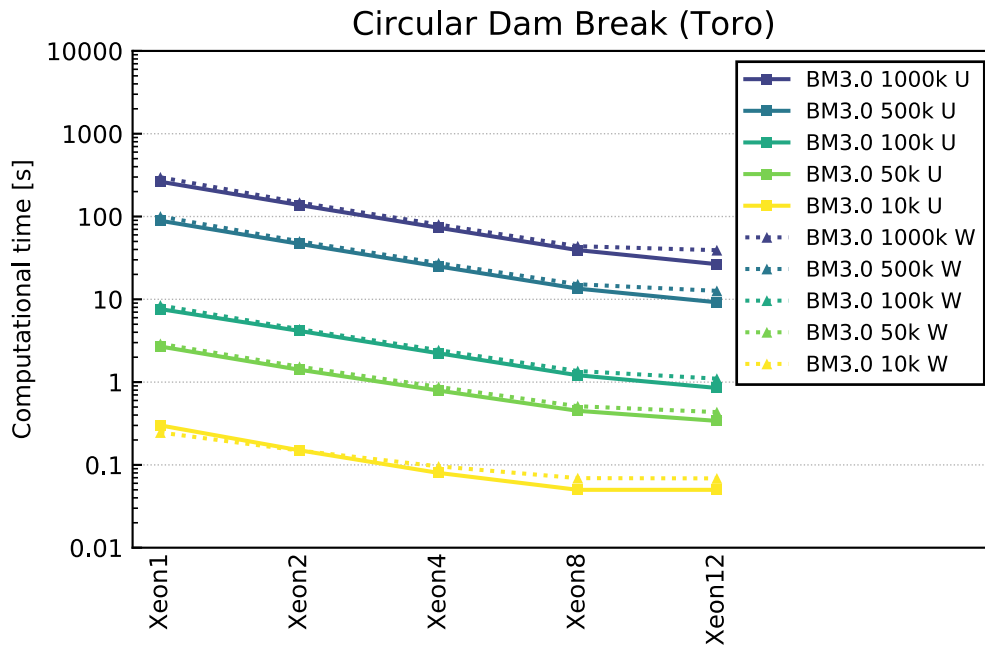


**Figure 2.4** Speedup of the computational time  $[T_N]$  for CPU (double) and GPU (single and double) compared to the time of the sequential backend Xeon1  $[T_1]$  for the circular dam break



**Figure 2.5** Speedup of the computational time  $[T_N]$  using different number of threads (CPU) compared to the time of the sequential backend Xeon1  $[T_1]$  for the circular dam break



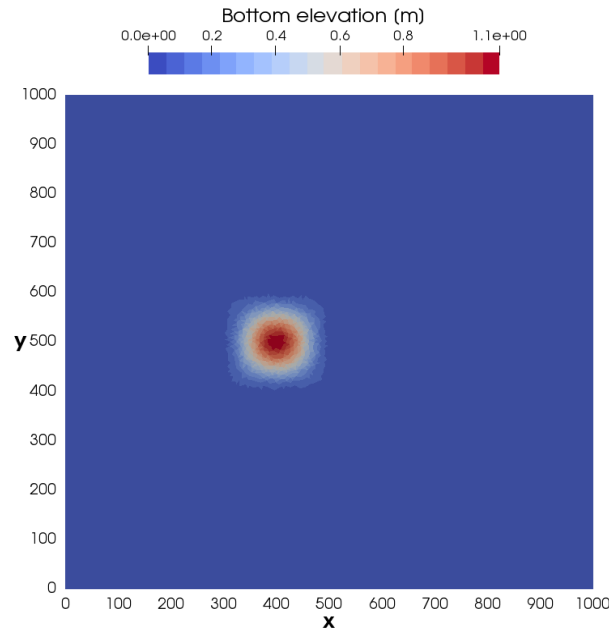


**Figure 2.6** Comparison of computational time using different number of threads (CPU) under Windows and Ubuntu on Intel Xeon E5-2667 v3, 3.20GHz processors.

**Table 2.6** Computational time (s) and speedup (in parentheses) of the circular dam break simulations for CPU simulations under Windows 10 (Intel Xeon E5-2667 v3, 3.20GHz)

Mesh size	Xeon 1 Double	Xeon 2 Double	Xeon 4 Double	Xeon 8 Double	Xeon 12 Double
10k	0.25	0.17 (1.53x)	0.10 (2.50x)	0.07 (3.57x)	0.07 (3.57x)
50k	2.90	1.53 (1.90x)	0.88 (3.30x)	0.51 (5.68x)	0.43 (6.74x)
100k	8.44	4.35 (1.94x)	2.44 (3.45x)	1.36 (6.2x)	1.10 (7.67x)
500k	100.12	50.09 (1.99x)	27.40 (3.69x)	15.20 (6.58x)	12.65 (7.91x)
1000k	297.61	147.53 (2.00x)	80.06 (3.71x)	43.81 (6.9x)	39.18 (7.58x)

The comparison of the execution time between Windows and Ubuntu in Figure 2.6 shows a very similar performance. The scalability under Ubuntu seems slightly better than under Windows 10.



*Figure 2.7* Initial bottom elevation of the conical dune, maximum elevation of 1.1 m at  $[x=400, y=500]$ .

## 2.3 Conical dune

### 2.3.1 Description

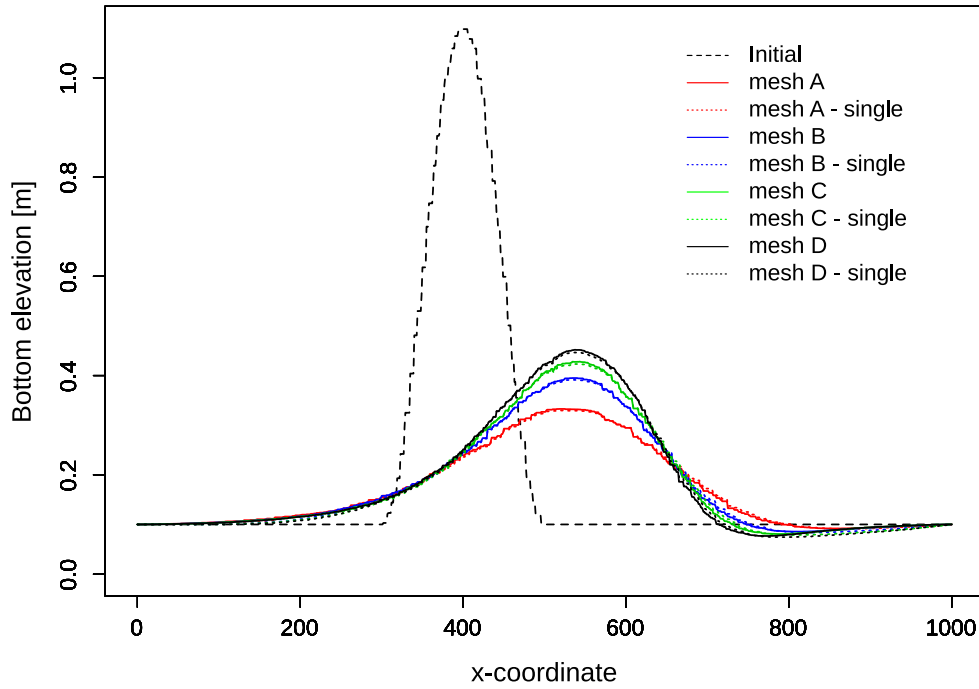
The conical dune test proposed by Hudson and Sweby (2005) is used to assess the performance of two dimensional morphodynamic models under sub-critical flow and without friction. The simulation describes the evolution of an initial conical dune of sediments that evolves in a star shaped pattern characterized by a spread angle  $\alpha_s$ . Numerical results are compared with the approximate analytical solution for the spread angle of the disturbance front proposed by de Vriend (1987).

### 2.3.2 Geometry and initial conditions

The computational mesh is a squared area of size 1000 x 1000 m with an initial bottom elevation  $z_{B,initial}$  (see Figure 2.7):

$$z_{B,initial} = \begin{cases} 0.1 + \sin^2\left(\frac{\pi(x-300)}{200}\right) \sin^2\left(\frac{\pi(y-400)}{200}\right) & \text{for } x \in [300, 500] \\ & \text{and } y \in [400, 600] \\ 0.1 & \text{otherwise} \end{cases} \quad (2.3)$$

An inflow boundary condition of Froude type is defined along the y-axis at  $x=0$  setting a constant unit discharge of 10 m/s. At  $x=1000$  m, a h-Q relation is defined as outflow boundary condition. The initial water depth is 10 m and the water surface elevation is kept constant at the boundaries. The Strickler coefficient is set to  $K_s = 10^7 [m^{1/3}/s]$  in order to obtain an almost frictionless simulation. The CFL number is set to 0.8, the



**Figure 2.8** Longitudinal bottom elevation profile at  $y=500$  m for initial conditions and after 100h of simulation for the meshes A, B, C and D with double and single precision

porosity to 0.4 and the morphodynamic boundary conditions are at equilibrium. Bed load transport is computed using the Grass formula with the parameters  $A_G = 0.001002$  and  $m_G = 3$  assuming a slow interaction between the sediment layer and the water flow. The analytical solution for the spread angle (eq. 2.4) proposed by de Vriend (1987) gives a value of  $\alpha_{s,ref} = 21.787^\circ$ .

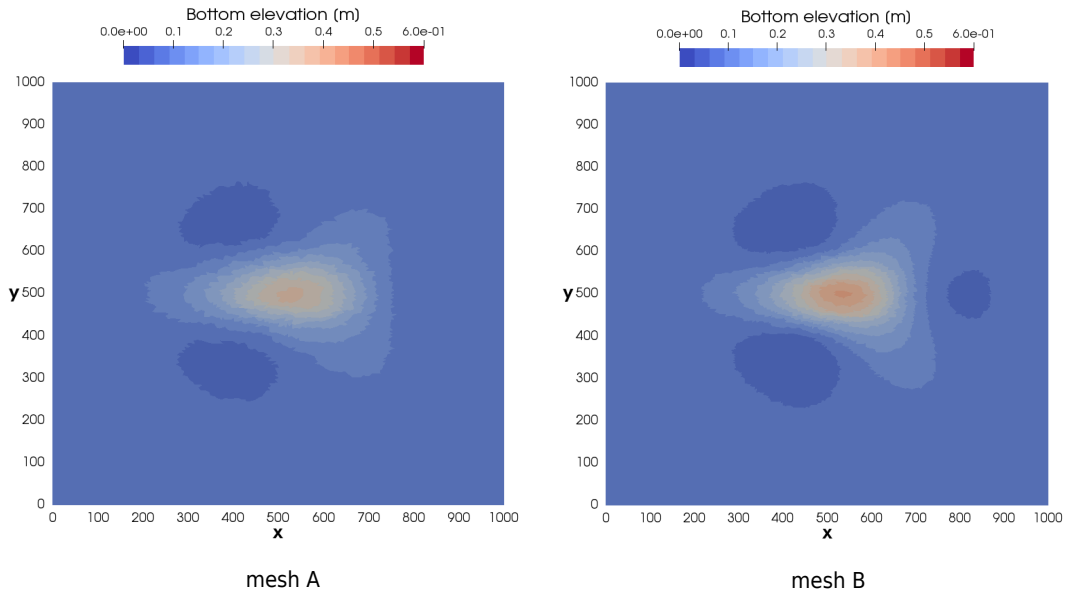
$$\alpha_s = \arctan\left(\frac{3\sqrt{3}(m_G - 1)}{9m_G - 1}\right) \quad (2.4)$$

The tests were performed with different computational mesh resolution, mesh A has 30160 cells (30k), mesh B 61201 cells (60k), mesh C 91083 cells (90k) and mesh D 126020 cells (120k). The simulation results were analyzed after 100 hours and each test was performed using different backends.

### 2.3.3 Results

Figure 2.8 shows the bed elevation profile at  $y = 500$  m along the  $x$ -coordinates at the beginning and after 100 h of the simulation for the four different meshes (A, B, C and D) performed with double and single precision. The results are exactly the same for all processor types, except for the simulation performed with CUDA-single, where the values are slightly different due to the reduced precision.

Table 2.7 summarizes the results obtained from the numerical simulations at  $t=100$ h for



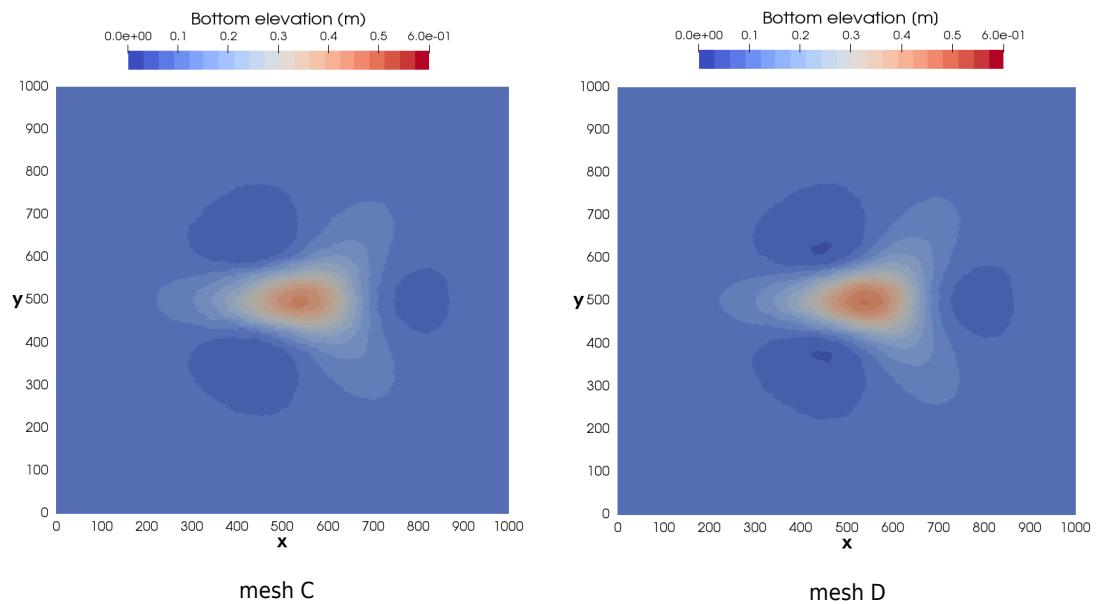
**Figure 2.9** Planar view of the bottom elevation after 100 hours of simulation for the meshes A and B.

the different meshes using the backend types CPU and GPU-double. The spread angle  $\alpha_s$  is measured between  $y = 500$  m and the line passing through the initial conical dune center point and the farthest point in the  $x$ -direction where the conical dune spread for a similar bottom elevation (Figure 2.9 and Figure 2.10). The spread angle was measured at time  $t=25$ h, 50h, 75h and 100h for each mesh size and the mean value is reported in Table 2.7. The accuracy of the simulations is assessed by the relative deviation between the measure spread angle  $\alpha_s$  and the spread angle defined by de Vriend (1987)  $\alpha_{s,ref}$ .

**Table 2.7** Summary of the simulation results performed with CPU and GPU double at  $t=100$ h for different computational meshes

Mesh	Number of cells [-]	Max. cone elevation [m]	$\alpha_s$ [°]	Relative deviation [%]
A	30160	0.3327	25.57	16.0
B	61201	0.3950	25.12	14.2
C	91083	0.4279	23.94	9.4
D	126020	0.4518	23.35	6.9

The maximum bottom elevation after 100h increases with the mesh resolution while the spread angle decreases (Table 2.7). The results are more accurate for finer meshes (mesh C and mesh D, Figure 2.8), where less diffusive sediment transport is observed and thus the maximum bottom elevation after 100h is higher than for coarser meshes. This increase in accuracy for finer meshes is also observed in Figure 2.9 and Figure 2.10 by a well defined star shaped sediment transport and a spread angle that becomes closer to the value proposed by de Vriend (1987).



**Figure 2.10** Planar view of the bottom elevation after 100 hours of simulation for the meshes C and D.

### 2.3.4 Performance

In total, 18 simulations were performed on different backends. The execution time depends on the mesh size, the computing processor and the number of cores used. The execution time is at maximum using the sequential platform and decreases using CPU accordingly to the number of cores used. The best performance reaches a speedup of two orders of magnitude using the GPU backend (Tables 2.8, 2.9 and 2.10).

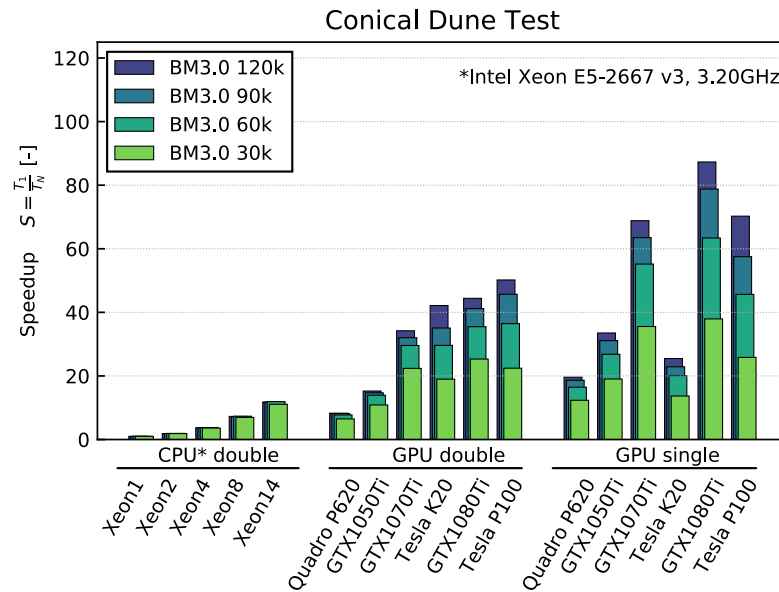
The performance of the different running platforms is compared with respect to the sequential running time (1 core). CUDA GPU-based processor proves its efficiency by showing a speedup increase for finer meshes, while the speedups of the CPU-based OpenMP platform increase with the increasing number of core, independently from the mesh type.

**Table 2.8** Computational time ( $h$ ) and speedup  $S$  (inside brackets) of the conical dune simulations for CPU simulations (Intel Xeon E5-2667 v3, 3.20GHz)

Mesh size	Xeon 1 Double	Xeon 2 Double	Xeon 4 Double	Xeon 8 Double	Xeon 12 Double	Xeon 14 Double
30k	7.26	3.88 (1.87x)	2.01 (3.61x)	1.04 (6.95x)	0.75 (9.71x)	0.65 (11.09x)
60k	23.08	11.95 (1.93x)	6.10 (3.78x)	3.15 (7.33x)	2.19 (10.52x)	1.94 (11.93x)
90k	38.47	20.45 (1.88x)	10.47 (3.67x)	5.40 (7.13x)	3.58 (10.74x)	3.27 (11.75x)
120k	61.30	32.48 (1.89x)	16.52 (3.71x)	8.43 (7.27x)	5.87 (10.44x)	5.19 (11.81x)

**Table 2.9** Computational time ( $s$ ) and speedup  $S$  (inside brackets) of the conical dune simulations for GPU simulations

Mesh size	Xeon 1 Double	Quadro P620 Single	Quadro P620 Double	Tesla K20 Single	Tesla K20 Double	Tesla P100 Single	Tesla P100 Double
30k	7.26	0.59 (12.34x)	1.12 (6.49x)	0.53 (13.69x)	0.38 (18.98x)	0.28 (25.85x)	0.32 (22.44x)
60k	23.08	1.40 (16.46x)	2.98 (7.73x)	1.15 (20.08x)	0.78 (29.61x)	0.51 (45.66x)	0.63 (36.45x)
90k	38.47	2.06 (18.64x)	4.71 (8.17x)	1.68 (22.87x)	1.10 (35.07x)	0.67 (57.51x)	0.84 (45.70x)
120k	61.30	3.13 (19.64x)	7.40 (8.29x)	2.41 (25.47x)	1.45 (42.15x)	0.87 (70.25x)	1.22 (50.19x)



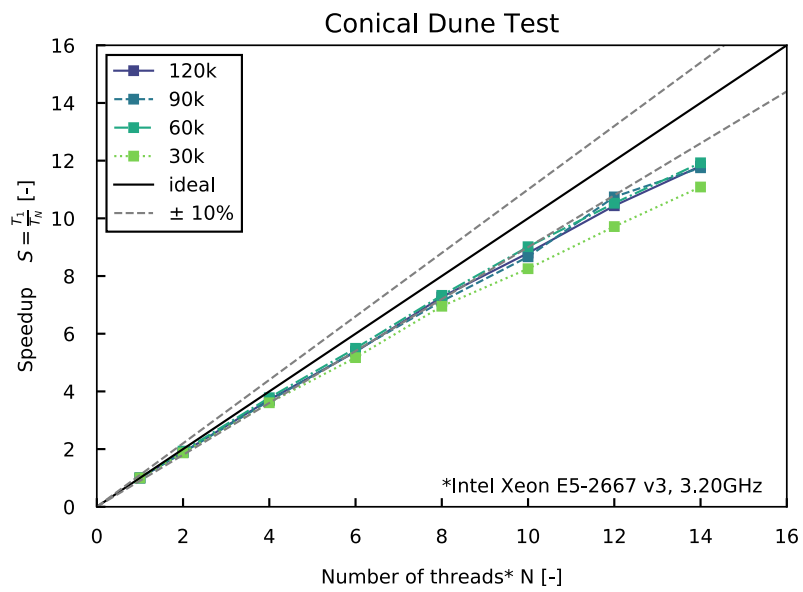
**Figure 2.11** Speedup of the computational time  $[T_N]$  for CPU (double) and GPU (single and double) compared to the time of the sequential backend Xeon1  $[T_1]$  for the conical dune test case

**Table 2.10** Computational time (s) and speedup  $S$  (inside brackets) of the conical dune simulations for GPU simulations

Mesh size	Xeon 1 Double	GTX 1050 Single	GTX 1050 Double	GTX 1070 Single	GTX 1070 Double	GTX 1080 Single	GTX 1080 Double
		30k	7.26	0.38 (19.03x)	0.67 (10.87x)	0.20 (35.55x)	0.32 (22.38x)
60k	23.08	0.86 (26.81x)	1.66 (13.93x)	0.42 (55.19x)	0.78 (29.58x)	0.36 (63.39x)	0.65 (35.49x)
90k	38.47	1.24 (31.11x)	2.62 (14.69x)	0.61 (63.50x)	1.20 (32.02x)	0.49 (78.79x)	0.93 (41.18x)
120k	61.30	1.83 (33.51x)	4.02 (15.26x)	0.89 (68.83x)	1.79 (34.21x)	0.70 (87.30x)	1.38 (44.41x)

Figure 2.11 shows the speedup achieved by the different backends, where the biggest time improvement is observed for the GPU single precision.

Figure 2.12 compares the speedup with the number of threads (CPU) between the different mesh resolutions. The simulations were performed using the CPU backend on an Intel Xeon E5-2667 v3 (3.20GHz) processor.



**Figure 2.12** Speedup of the computational time  $[T_N]$  using different number of threads (CPU) compared to the time of the sequential backend Xeon1  $[T_1]$  for the conical dune test case



# 3

---

## References

- de Vriend, H. (1987). 2DH mathematical modelling of morphological evolutions in shallow water. *Coastal engineering*, 11(1): 1–27.
- Hudson, J. and Sweby, P.K. (2005). A high-resolution scheme for the equations governing 2D bed-load sediment transport. *International Journal for Numerical Methods in Fluids*, 47: 1085–1091.
- Toro, E.F. (2001). Shock-Capturing Methods for Free-Surface Shallow Flows. *John Wiley*, Chichester, New York.
- Vanzo, D., Siviglia, A. and Toro, E.F. (2016). Pollutant transport by shallow water equations on unstructured meshes: Hyperbolization of the model and numerical solution via a novel flux splitting scheme. *Journal of Computational Physics*, 321: 1–20.



**BASIC SIMULATION ENVIRONMENT  
FOR SIMULATION OF ENVIRONMENTAL FLOW  
AND NATURAL HAZRAD SIMULATION**

---

# **APPENDIX**

**VERSION 3.0  
September 2019**



**BASEMENT**



---

## Third Party Software

### 1.1 Third party software copyright notices

#### Abseil

Copyright Google Inc.

License: Apache 2.0

#### glibc-queue

Copyright (C) 1991-2015 Free Software Foundation, Inc.

The GNU C Library is free software; you can redistribute it and/or modify it under the terms of the GNU Lesser General Public License as published by the Free Software Foundation; either version 2.1 of the License, or (at your option) any later version.

The GNU C Library is distributed in the hope that it will be useful, but WITHOUT ANY WARRANTY; without even the implied warranty of MERCHANTABILITY or FITNESS FOR A PARTICULAR PURPOSE. See the GNU Lesser General Public License for more details.

You should have received a copy of the GNU Lesser General Public License along with the GNU C Library; if not, write to the Free Software Foundation, Inc., 51 Franklin St, Fifth Floor, Boston, MA 02110-1301 USA

\* All code incorporated from 4.4 BSD is distributed under the following license:

Copyright (C) 1991 Regents of the University of California.  
All rights reserved.

Redistribution and use in source and binary forms, with or without modification, are permitted provided that the following conditions are met:

1. Redistributions of source code must retain the above copyright notice, this list of conditions and the following disclaimer.
2. Redistributions in binary form must reproduce the above copyright notice, this list of conditions and the following disclaimer in the

documentation and/or other materials provided with the distribution.

3. [This condition was removed.]
4. Neither the name of the University nor the names of its contributors may be used to endorse or promote products derived from this software without specific prior written permission.

THIS SOFTWARE IS PROVIDED BY THE REGENTS AND CONTRIBUTORS ``AS IS'' AND ANY EXPRESS OR IMPLIED WARRANTIES, INCLUDING, BUT NOT LIMITED TO, THE IMPLIED WARRANTIES OF MERCHANTABILITY AND FITNESS FOR A PARTICULAR PURPOSE ARE DISCLAIMED. IN NO EVENT SHALL THE REGENTS OR CONTRIBUTORS BE LIABLE FOR ANY DIRECT, INDIRECT, INCIDENTAL, SPECIAL, EXEMPLARY, OR CONSEQUENTIAL DAMAGES (INCLUDING, BUT NOT LIMITED TO, PROCUREMENT OF SUBSTITUTE GOODS OR SERVICES; LOSS OF USE, DATA, OR PROFITS; OR BUSINESS INTERRUPTION) HOWEVER CAUSED AND ON ANY THEORY OF LIABILITY, WHETHER IN CONTRACT, STRICT LIABILITY, OR TORT (INCLUDING NEGLIGENCE OR OTHERWISE) ARISING IN ANY WAY OUT OF THE USE OF THIS SOFTWARE, EVEN IF ADVISED OF THE POSSIBILITY OF SUCH DAMAGE.

### Google Test

Copyright 2008, Google Inc.

All rights reserved.

License: BSD 2.0

### HDF5

HDF5 (Hierarchical Data Format 5) Software Library and Utilities  
Copyright (c) 2006-2018, The HDF Group.

NCSA HDF5 (Hierarchical Data Format 5) Software Library and Utilities  
Copyright (c) 1998-2006, The Board of Trustees of the University of Illinois.

All rights reserved.

Redistribution and use in source and binary forms, with or without modification, are permitted for any purpose (including commercial purposes) provided that the following conditions are met:

1. Redistributions of source code must retain the above copyright notice, this list of conditions, and the following disclaimer.
2. Redistributions in binary form must reproduce the above copyright notice, this list of conditions, and the following disclaimer in the documentation and/or materials provided with the distribution.
3. Neither the name of The HDF Group, the name of the University, nor the name of any Contributor may be used to endorse or promote products derived from this software without specific prior written permission from The HDF Group, the University, or the Contributor, respectively.

#### DISCLAIMER:

THIS SOFTWARE IS PROVIDED BY THE HDF GROUP AND THE CONTRIBUTORS "AS IS" WITH NO WARRANTY OF ANY KIND, EITHER EXPRESSED OR IMPLIED. IN NO EVENT SHALL THE HDF GROUP OR THE CONTRIBUTORS BE LIABLE FOR ANY DAMAGES SUFFERED BY THE USERS ARISING OUT OF THE USE OF THIS SOFTWARE, EVEN IF ADVISED OF THE POSSIBILITY OF SUCH DAMAGE.

You are under no obligation whatsoever to provide any bug fixes, patches, or upgrades to the features, functionality or performance of the source code ("Enhancements") to anyone; however, if you choose to make your Enhancements available either publicly, or directly to The HDF Group, without imposing a separate written license agreement for such Enhancements, then you hereby grant the following license: a non-exclusive, royalty-free perpetual license to install, use, modify, prepare derivative works, incorporate into other computer software, distribute, and sublicense such enhancements or derivative works thereof, in binary and source code form.

Limited portions of HDF5 were developed by Lawrence Berkeley National Laboratory (LBNL). LBNL's Copyright Notice and Licensing Terms can be found here: COPYING\_LBNL\_HDF5 file in this directory or at [http://support.hdfgroup.org/ftp/HDF5/releases/COPYING\\_LBNL\\_HDF5](http://support.hdfgroup.org/ftp/HDF5/releases/COPYING_LBNL_HDF5).

Contributors: National Center for Supercomputing Applications (NCSA) at the University of Illinois, Fortner Software, Unidata Program Center (netCDF), The Independent JPEG Group (JPEG), Jean-loup Gailly and Mark Adler (gzip), and Digital Equipment Corporation (DEC).

Portions of HDF5 were developed with support from the Lawrence Berkeley National Laboratory (LBNL) and the United States Department of Energy under Prime Contract No. DE-AC02-05CH11231.

Portions of HDF5 were developed with support from the University of California, Lawrence Livermore National Laboratory (UC LLNL). The following statement applies to those portions of the product and must be retained in any redistribution of source code, binaries, documentation, and/or accompanying materials:

This work was partially produced at the University of California, Lawrence Livermore National Laboratory (UC LLNL) under contract no. W-7405-ENG-48 (Contract 48) between the U.S. Department of Energy (DOE) and The Regents of the University of California (University) for the operation of UC LLNL.

**DISCLAIMER:**

This work was prepared as an account of work sponsored by an agency of the United States Government. Neither the United States Government nor the University of California nor any of their employees, makes any warranty, express or implied, or assumes any liability or responsibility for the accuracy, completeness, or usefulness of any information, apparatus, product, or process disclosed, or represents that its use would not infringe privately-owned rights. Reference herein to any specific commercial products, process, or service by trade name, trademark, manufacturer, or otherwise, does not necessarily constitute or imply its endorsement, recommendation, or favoring by the United States Government or the University of California. The views and opinions of authors expressed herein do not necessarily state or reflect those of the United States Government or the University of California, and shall not be used for advertising or product endorsement purposes.

HDF5 is available with the SZIP compression library but SZIP is not part of HDF5 and has separate copyright and license terms. See SZIP Compression in HDF Products ([www.hdfgroup.org/doc\\_resource/SZIP/](http://www.hdfgroup.org/doc_resource/SZIP/)) for further details.

### HighFive

License: BSL 1.0

### JSON for Modern C++

Copyright (c) 2013-2018 Niels Lohmann

License: MIT

### libgcc, libstdc++, libgomp

Copyright (C) 1986, 1987, 1988, 1989, 1990, 1991, 1992, 1993, 1994, 1995, 1996, 1997, 1998, 1999, 2000, 2001, 2002, 2003, 2004, 2005, 2006, 2007, 2008, 2009, 2010, 2011, 2012, 2013, 2014 Free Software Foundation, Inc.

License: GPLv3 with GCC Runtime Library Exception 3.1

### mingw-w64-winpthreads

Copyright (c) 2011 mingw-w64 project

Permission is hereby granted, free of charge, to any person obtaining a copy of this software and associated documentation files (the "Software"), to deal in the Software without restriction, including without limitation the rights to use, copy, modify, merge, publish, distribute, sublicense, and/or sell copies of the Software, and to permit persons to whom the Software is furnished to do so, subject to the following conditions:

The above copyright notice and this permission notice shall be included in all copies or substantial portions of the Software.

THE SOFTWARE IS PROVIDED "AS IS", WITHOUT WARRANTY OF ANY KIND, EXPRESS OR IMPLIED, INCLUDING BUT NOT LIMITED TO THE WARRANTIES OF MERCHANTABILITY, FITNESS FOR A PARTICULAR PURPOSE AND NONINFRINGEMENT. IN NO EVENT SHALL THE AUTHORS OR COPYRIGHT HOLDERS BE LIABLE FOR ANY CLAIM, DAMAGES OR OTHER LIABILITY, WHETHER IN AN ACTION OF CONTRACT, TORT OR OTHERWISE, ARISING FROM, OUT OF OR IN CONNECTION WITH THE SOFTWARE OR THE USE OR OTHER DEALINGS IN THE SOFTWARE.

```
/*
 * Parts of this library are derived by:
 *
 * Posix Threads library for Microsoft Windows
 *
 * Use at own risk, there is no implied warranty to this code.
 * It uses undocumented features of Microsoft Windows that can change
 * at any time in the future.
 *
 * (C) 2010 Lockless Inc.
 * All rights reserved.
 *
 * Redistribution and use in source and binary forms, with or without modification,
 * are permitted provided that the following conditions are met:
 *
 * * Redistributions of source code must retain the above copyright notice,
 *   this list of conditions and the following disclaimer.
 * * Redistributions in binary form must reproduce the above copyright notice,
 *   this list of conditions and the following disclaimer in the documentation
 *   and/or other materials provided with the distribution.
 * * Neither the name of Lockless Inc. nor the names of its contributors may be
 *   used to endorse or promote products derived from this software without
 *   specific prior written permission.
 *
 * THIS SOFTWARE IS PROVIDED BY THE COPYRIGHT HOLDERS AND CONTRIBUTORS "AS IS" AN
 * ANY EXPRESS OR IMPLIED WARRANTIES, INCLUDING, BUT NOT LIMITED TO, THE IMPLIED
 * WARRANTIES OF MERCHANTABILITY AND FITNESS FOR A PARTICULAR PURPOSE ARE DISCLAIMED.
 * IN NO EVENT SHALL THE COPYRIGHT HOLDER OR CONTRIBUTORS BE LIABLE FOR ANY DIRECT,
 * INDIRECT, INCIDENTAL, SPECIAL, EXEMPLARY, OR CONSEQUENTIAL DAMAGES (INCLUDING,
 * BUT NOT LIMITED TO, PROCUREMENT OF SUBSTITUTE GOODS OR SERVICES; LOSS OF USE,
 * DATA, OR PROFITS; OR BUSINESS INTERRUPTION) HOWEVER CAUSED AND ON ANY THEORY OF
 * LIABILITY, WHETHER IN CONTRACT, STRICT LIABILITY, OR TORT (INCLUDING NEGLIGENCE
 * OR OTHERWISE) ARISING IN ANY WAY OUT OF THE USE OF THIS SOFTWARE, EVEN IF ADVISED
 * OF THE POSSIBILITY OF SUCH DAMAGE.
*/
```

## OP2

Copyright (c) 2011, Gihan Mudalige, Istvan Reguly, Mike Giles, and others.  
Please see the AUTHORS file in the main source directory for details.  
All rights reserved.

License: BSD 2.0

OpenMesh



Copyright (c) 2001-2015, RWTH-Aachen University

Department of Computer Graphics and Multimedia

All rights reserved.

[www.openmesh.org](http://www.openmesh.org)

License: BSD 2.0

### Qt

Copyright (C) 2018 The Qt Company Ltd and other contributors

License: LGPL 3.0

### SimpleXdmf

Copyright (c) 2017 hsimyu

License: MIT

### TCLAP

Copyright (c) 2003 Michael E. Smoot

License: MIT

## 1.2 Third party software licenses

### LGPL 3.0

GNU LESSER GENERAL PUBLIC LICENSE  
Version 3, 29 June 2007

Copyright (C) 2007 Free Software Foundation, Inc. <<https://fsf.org/>>  
Everyone is permitted to copy and distribute verbatim copies  
of this license document, but changing it is not allowed.

This version of the GNU Lesser General Public License incorporates  
the terms and conditions of version 3 of the GNU General Public  
License, supplemented by the additional permissions listed below.

#### 0. Additional Definitions.

As used herein, "this License" refers to version 3 of the GNU Lesser  
General Public License, and the "GNU GPL" refers to version 3 of the GNU  
General Public License.

"The Library" refers to a covered work governed by this License,  
other than an Application or a Combined Work as defined below.

An "Application" is any work that makes use of an interface provided  
by the Library, but which is not otherwise based on the Library.  
Defining a subclass of a class defined by the Library is deemed a mode  
of using an interface provided by the Library.

A "Combined Work" is a work produced by combining or linking an  
Application with the Library. The particular version of the Library  
with which the Combined Work was made is also called the "Linked  
Version".

The "Minimal Corresponding Source" for a Combined Work means the Corresponding Source for the Combined Work, excluding any source code for portions of the Combined Work that, considered in isolation, are based on the Application, and not on the Linked Version.

The "Corresponding Application Code" for a Combined Work means the object code and/or source code for the Application, including any data and utility programs needed for reproducing the Combined Work from the Application, but excluding the System Libraries of the Combined Work.

#### 1. Exception to Section 3 of the GNU GPL.

You may convey a covered work under sections 3 and 4 of this License without being bound by section 3 of the GNU GPL.

#### 2. Conveying Modified Versions.

If you modify a copy of the Library, and, in your modifications, a facility refers to a function or data to be supplied by an Application that uses the facility (other than as an argument passed when the facility is invoked), then you may convey a copy of the modified version:

- a) under this License, provided that you make a good faith effort to ensure that, in the event an Application does not supply the function or data, the facility still operates, and performs whatever part of its purpose remains meaningful, or
- b) under the GNU GPL, with none of the additional permissions of this License applicable to that copy.

#### 3. Object Code Incorporating Material from Library Header Files.

The object code form of an Application may incorporate material from a header file that is part of the Library. You may convey such object code under terms of your choice, provided that, if the incorporated material is not limited to numerical parameters, data structure layouts and accessors, or small macros, inline functions and templates (ten or fewer lines in length), you do both of the following:

- a) Give prominent notice with each copy of the object code that the Library is used in it and that the Library and its use are covered by this License.
- b) Accompany the object code with a copy of the GNU GPL and this license document.

#### 4. Combined Works.

You may convey a Combined Work under terms of your choice that, taken together, effectively do not restrict modification of the portions of the Library contained in the Combined Work and reverse engineering for debugging such modifications, if you also do each of the following:

- a) Give prominent notice with each copy of the Combined Work that the Library is used in it and that the Library and its use are covered by this License.
- b) Accompany the Combined Work with a copy of the GNU GPL and this license document.
- c) For a Combined Work that displays copyright notices during execution, include the copyright notice for the Library among these notices, as well as a reference directing the user to the copies of the GNU GPL and this license document.
- d) Do one of the following:

0) Convey the Minimal Corresponding Source under the terms of this License, and the Corresponding Application Code in a form suitable for, and under terms that permit, the user to recombine or relink the Application with a modified version of the Linked Version to produce a modified Combined Work, in the manner specified by section 6 of the GNU GPL for conveying Corresponding Source.

1) Use a suitable shared library mechanism for linking with the Library. A suitable mechanism is one that (a) uses at run time a copy of the Library already present on the user's computer system, and (b) will operate properly with a modified version of the Library that is interface-compatible with the Linked Version.

e) Provide Installation Information, but only if you would otherwise be required to provide such information under section 6 of the GNU GPL, and only to the extent that such information is necessary to install and execute a modified version of the Combined Work produced by recombining or relinking the Application with a modified version of the Linked Version. (If you use option 4d0, the Installation Information must accompany the Minimal Corresponding Source and Corresponding Application Code. If you use option 4d1, you must provide the Installation Information in the manner specified by section 6 of the GNU GPL for conveying Corresponding Source.)

#### 5. Combined Libraries.

You may place library facilities that are a work based on the Library side by side in a single library together with other library facilities that are not Applications and are not covered by this License, and convey such a combined library under terms of your choice, if you do both of the following:

- a) Accompany the combined library with a copy of the same work based on the Library, uncombined with any other library facilities, conveyed under the terms of this License.
- b) Give prominent notice with the combined library that part of it is a work based on the Library, and explaining where to find the accompanying uncombined form of the same work.

#### 6. Revised Versions of the GNU Lesser General Public License.

The Free Software Foundation may publish revised and/or new versions of the GNU Lesser General Public License from time to time. Such new versions will be similar in spirit to the present version, but may differ in detail to address new problems or concerns.

Each version is given a distinguishing version number. If the Library as you received it specifies that a certain numbered version of the GNU Lesser General Public License "or any later version" applies to it, you have the option of following the terms and conditions either of that published version or of any later version published by the Free Software Foundation. If the Library as you received it does not specify a version number of the GNU Lesser General Public License, you may choose any version of the GNU Lesser General Public License ever published by the Free Software Foundation.

If the Library as you received it specifies that a proxy can decide whether future versions of the GNU Lesser General Public License shall apply, that proxy's public statement of acceptance of any version is permanent authorization for you to choose that version for the Library.

### GPL 3.0

GNU GENERAL PUBLIC LICENSE

Version 3, 29 June 2007

Copyright (C) 2007 Free Software Foundation, Inc. <<https://fsf.org/>>  
Everyone is permitted to copy and distribute verbatim copies  
of this license document, but changing it is not allowed.

#### Preamble

The GNU General Public License is a free, copyleft license for  
software and other kinds of works.

The licenses for most software and other practical works are designed  
to take away your freedom to share and change the works. By contrast,  
the GNU General Public License is intended to guarantee your freedom to  
share and change all versions of a program--to make sure it remains free  
software for all its users. We, the Free Software Foundation, use the  
GNU General Public License for most of our software; it applies also to  
any other work released this way by its authors. You can apply it to  
your programs, too.

When we speak of free software, we are referring to freedom, not  
price. Our General Public Licenses are designed to make sure that you  
have the freedom to distribute copies of free software (and charge for  
them if you wish), that you receive source code or can get it if you  
want it, that you can change the software or use pieces of it in new  
free programs, and that you know you can do these things.

To protect your rights, we need to prevent others from denying you  
these rights or asking you to surrender the rights. Therefore, you have  
certain responsibilities if you distribute copies of the software, or if  
you modify it: responsibilities to respect the freedom of others.

For example, if you distribute copies of such a program, whether  
gratis or for a fee, you must pass on to the recipients the same  
freedoms that you received. You must make sure that they, too, receive  
or can get the source code. And you must show them these terms so they  
know their rights.

Developers that use the GNU GPL protect your rights with two steps:  
(1) assert copyright on the software, and (2) offer you this License  
giving you legal permission to copy, distribute and/or modify it.

For the developers' and authors' protection, the GPL clearly explains  
that there is no warranty for this free software. For both users' and  
authors' sake, the GPL requires that modified versions be marked as  
changed, so that their problems will not be attributed erroneously to  
authors of previous versions.

Some devices are designed to deny users access to install or run  
modified versions of the software inside them, although the manufacturer  
can do so. This is fundamentally incompatible with the aim of  
protecting users' freedom to change the software. The systematic  
pattern of such abuse occurs in the area of products for individuals to  
use, which is precisely where it is most unacceptable. Therefore, we  
have designed this version of the GPL to prohibit the practice for those  
products. If such problems arise substantially in other domains, we  
stand ready to extend this provision to those domains in future versions  
of the GPL, as needed to protect the freedom of users.

Finally, every program is threatened constantly by software patents.  
States should not allow patents to restrict development and use of  
software on general-purpose computers, but in those that do, we wish to  
avoid the special danger that patents applied to a free program could  
make it effectively proprietary. To prevent this, the GPL assures that  
patents cannot be used to render the program non-free.

The precise terms and conditions for copying, distribution and  
modification follow.

#### TERMS AND CONDITIONS

## 0. Definitions.

"This License" refers to version 3 of the GNU General Public License.

"Copyright" also means copyright-like laws that apply to other kinds of works, such as semiconductor masks.

"The Program" refers to any copyrightable work licensed under this License. Each licensee is addressed as "you". "Licensees" and "recipients" may be individuals or organizations.

To "modify" a work means to copy from or adapt all or part of the work in a fashion requiring copyright permission, other than the making of an exact copy. The resulting work is called a "modified version" of the earlier work or a work "based on" the earlier work.

A "covered work" means either the unmodified Program or a work based on the Program.

To "propagate" a work means to do anything with it that, without permission, would make you directly or secondarily liable for infringement under applicable copyright law, except executing it on a computer or modifying a private copy. Propagation includes copying, distribution (with or without modification), making available to the public, and in some countries other activities as well.

To "convey" a work means any kind of propagation that enables other parties to make or receive copies. Mere interaction with a user through a computer network, with no transfer of a copy, is not conveying.

An interactive user interface displays "Appropriate Legal Notices" to the extent that it includes a convenient and prominently visible feature that (1) displays an appropriate copyright notice, and (2) tells the user that there is no warranty for the work (except to the extent that warranties are provided), that licensees may convey the work under this License, and how to view a copy of this License. If the interface presents a list of user commands or options, such as a menu, a prominent item in the list meets this criterion.

## 1. Source Code.

The "source code" for a work means the preferred form of the work for making modifications to it. "Object code" means any non-source form of a work.

A "Standard Interface" means an interface that either is an official standard defined by a recognized standards body, or, in the case of interfaces specified for a particular programming language, one that is widely used among developers working in that language.

The "System Libraries" of an executable work include anything, other than the work as a whole, that (a) is included in the normal form of packaging a Major Component, but which is not part of that Major Component, and (b) serves only to enable use of the work with that Major Component, or to implement a Standard Interface for which an implementation is available to the public in source code form. A "Major Component", in this context, means a major essential component (kernel, window system, and so on) of the specific operating system (if any) on which the executable work runs, or a compiler used to produce the work, or an object code interpreter used to run it.

The "Corresponding Source" for a work in object code form means all the source code needed to generate, install, and (for an executable work) run the object code and to modify the work, including scripts to control those activities. However, it does not include the work's System Libraries, or general-purpose tools or generally available free programs which are used unmodified in performing those activities but which are not part of the work. For example, Corresponding Source includes interface definition files associated with source files for

the work, and the source code for shared libraries and dynamically linked subprograms that the work is specifically designed to require, such as by intimate data communication or control flow between those subprograms and other parts of the work.

The Corresponding Source need not include anything that users can regenerate automatically from other parts of the Corresponding Source.

The Corresponding Source for a work in source code form is that same work.

## 2. Basic Permissions.

All rights granted under this License are granted for the term of copyright on the Program, and are irrevocable provided the stated conditions are met. This License explicitly affirms your unlimited permission to run the unmodified Program. The output from running a covered work is covered by this License only if the output, given its content, constitutes a covered work. This License acknowledges your rights of fair use or other equivalent, as provided by copyright law.

You may make, run and propagate covered works that you do not convey, without conditions so long as your license otherwise remains in force. You may convey covered works to others for the sole purpose of having them make modifications exclusively for you, or provide you with facilities for running those works, provided that you comply with the terms of this License in conveying all material for which you do not control copyright. Those thus making or running the covered works for you must do so exclusively on your behalf, under your direction and control, on terms that prohibit them from making any copies of your copyrighted material outside their relationship with you.

Conveying under any other circumstances is permitted solely under the conditions stated below. Sublicensing is not allowed; section 10 makes it unnecessary.

## 3. Protecting Users' Legal Rights From Anti-Circumvention Law.

No covered work shall be deemed part of an effective technological measure under any applicable law fulfilling obligations under article 11 of the WIPO copyright treaty adopted on 20 December 1996, or similar laws prohibiting or restricting circumvention of such measures.

When you convey a covered work, you waive any legal power to forbid circumvention of technological measures to the extent such circumvention is effected by exercising rights under this License with respect to the covered work, and you disclaim any intention to limit operation or modification of the work as a means of enforcing, against the work's users, your or third parties' legal rights to forbid circumvention of technological measures.

## 4. Conveying Verbatim Copies.

You may convey verbatim copies of the Program's source code as you receive it, in any medium, provided that you conspicuously and appropriately publish on each copy an appropriate copyright notice; keep intact all notices stating that this License and any non-permissive terms added in accord with section 7 apply to the code; keep intact all notices of the absence of any warranty; and give all recipients a copy of this License along with the Program.

You may charge any price or no price for each copy that you convey, and you may offer support or warranty protection for a fee.

## 5. Conveying Modified Source Versions.

You may convey a work based on the Program, or the modifications to produce it from the Program, in the form of source code under the

terms of section 4, provided that you also meet all of these conditions:

- a) The work must carry prominent notices stating that you modified it, and giving a relevant date.
- b) The work must carry prominent notices stating that it is released under this License and any conditions added under section 7. This requirement modifies the requirement in section 4 to "keep intact all notices".
- c) You must license the entire work, as a whole, under this License to anyone who comes into possession of a copy. This License will therefore apply, along with any applicable section 7 additional terms, to the whole of the work, and all its parts, regardless of how they are packaged. This License gives no permission to license the work in any other way, but it does not invalidate such permission if you have separately received it.
- d) If the work has interactive user interfaces, each must display Appropriate Legal Notices; however, if the Program has interactive interfaces that do not display Appropriate Legal Notices, your work need not make them do so.

A compilation of a covered work with other separate and independent works, which are not by their nature extensions of the covered work, and which are not combined with it such as to form a larger program, in or on a volume of a storage or distribution medium, is called an "aggregate" if the compilation and its resulting copyright are not used to limit the access or legal rights of the compilation's users beyond what the individual works permit. Inclusion of a covered work in an aggregate does not cause this License to apply to the other parts of the aggregate.

#### 6. Conveying Non-Source Forms.

You may convey a covered work in object code form under the terms of sections 4 and 5, provided that you also convey the machine-readable Corresponding Source under the terms of this License, in one of these ways:

- a) Convey the object code in, or embodied in, a physical product (including a physical distribution medium), accompanied by the Corresponding Source fixed on a durable physical medium customarily used for software interchange.
- b) Convey the object code in, or embodied in, a physical product (including a physical distribution medium), accompanied by a written offer, valid for at least three years and valid for as long as you offer spare parts or customer support for that product model, to give anyone who possesses the object code either (1) a copy of the Corresponding Source for all the software in the product that is covered by this License, on a durable physical medium customarily used for software interchange, for a price no more than your reasonable cost of physically performing this conveying of source, or (2) access to copy the Corresponding Source from a network server at no charge.
- c) Convey individual copies of the object code with a copy of the written offer to provide the Corresponding Source. This alternative is allowed only occasionally and noncommercially, and only if you received the object code with such an offer, in accord with subsection 6b.
- d) Convey the object code by offering access from a designated place (gratis or for a charge), and offer equivalent access to the Corresponding Source in the same way through the same place at no further charge. You need not require recipients to copy the Corresponding Source along with the object code. If the place to copy the object code is a network server, the Corresponding Source may be on a different server (operated by you or a third party)

that supports equivalent copying facilities, provided you maintain clear directions next to the object code saying where to find the Corresponding Source. Regardless of what server hosts the Corresponding Source, you remain obligated to ensure that it is available for as long as needed to satisfy these requirements.

e) Convey the object code using peer-to-peer transmission, provided you inform other peers where the object code and Corresponding Source of the work are being offered to the general public at no charge under subsection 6d.

A separable portion of the object code, whose source code is excluded from the Corresponding Source as a System Library, need not be included in conveying the object code work.

A "User Product" is either (1) a "consumer product", which means any tangible personal property which is normally used for personal, family, or household purposes, or (2) anything designed or sold for incorporation into a dwelling. In determining whether a product is a consumer product, doubtful cases shall be resolved in favor of coverage. For a particular product received by a particular user, "normally used" refers to a typical or common use of that class of product, regardless of the status of the particular user or of the way in which the particular user actually uses, or expects or is expected to use, the product. A product is a consumer product regardless of whether the product has substantial commercial, industrial or non-consumer uses, unless such uses represent the only significant mode of use of the product.

"Installation Information" for a User Product means any methods, procedures, authorization keys, or other information required to install and execute modified versions of a covered work in that User Product from a modified version of its Corresponding Source. The information must suffice to ensure that the continued functioning of the modified object code is in no case prevented or interfered with solely because modification has been made.

If you convey an object code work under this section in, or with, or specifically for use in, a User Product, and the conveying occurs as part of a transaction in which the right of possession and use of the User Product is transferred to the recipient in perpetuity or for a fixed term (regardless of how the transaction is characterized), the Corresponding Source conveyed under this section must be accompanied by the Installation Information. But this requirement does not apply if neither you nor any third party retains the ability to install modified object code on the User Product (for example, the work has been installed in ROM).

The requirement to provide Installation Information does not include a requirement to continue to provide support service, warranty, or updates for a work that has been modified or installed by the recipient, or for the User Product in which it has been modified or installed. Access to a network may be denied when the modification itself materially and adversely affects the operation of the network or violates the rules and protocols for communication across the network.

Corresponding Source conveyed, and Installation Information provided, in accord with this section must be in a format that is publicly documented (and with an implementation available to the public in source code form), and must require no special password or key for unpacking, reading or copying.

#### 7. Additional Terms.

"Additional permissions" are terms that supplement the terms of this License by making exceptions from one or more of its conditions. Additional permissions that are applicable to the entire Program shall be treated as though they were included in this License, to the extent that they are valid under applicable law. If additional permissions apply only to part of the Program, that part may be used separately under those permissions, but the entire Program remains governed by



this License without regard to the additional permissions.

When you convey a copy of a covered work, you may at your option remove any additional permissions from that copy, or from any part of it. (Additional permissions may be written to require their own removal in certain cases when you modify the work.) You may place additional permissions on material, added by you to a covered work, for which you have or can give appropriate copyright permission.

Notwithstanding any other provision of this License, for material you add to a covered work, you may (if authorized by the copyright holders of that material) supplement the terms of this License with terms:

- a) Disclaiming warranty or limiting liability differently from the terms of sections 15 and 16 of this License; or
- b) Requiring preservation of specified reasonable legal notices or author attributions in that material or in the Appropriate Legal Notices displayed by works containing it; or
- c) Prohibiting misrepresentation of the origin of that material, or requiring that modified versions of such material be marked in reasonable ways as different from the original version; or
- d) Limiting the use for publicity purposes of names of licensors or authors of the material; or
- e) Declining to grant rights under trademark law for use of some trade names, trademarks, or service marks; or
- f) Requiring indemnification of licensors and authors of that material by anyone who conveys the material (or modified versions of it) with contractual assumptions of liability to the recipient, for any liability that these contractual assumptions directly impose on those licensors and authors.

All other non-permissive additional terms are considered "further restrictions" within the meaning of section 10. If the Program as you received it, or any part of it, contains a notice stating that it is governed by this License along with a term that is a further restriction, you may remove that term. If a license document contains a further restriction but permits relicensing or conveying under this License, you may add to a covered work material governed by the terms of that license document, provided that the further restriction does not survive such relicensing or conveying.

If you add terms to a covered work in accord with this section, you must place, in the relevant source files, a statement of the additional terms that apply to those files, or a notice indicating where to find the applicable terms.

Additional terms, permissive or non-permissive, may be stated in the form of a separately written license, or stated as exceptions; the above requirements apply either way.

## 8. Termination.

You may not propagate or modify a covered work except as expressly provided under this License. Any attempt otherwise to propagate or modify it is void, and will automatically terminate your rights under this License (including any patent licenses granted under the third paragraph of section 11).

However, if you cease all violation of this License, then your license from a particular copyright holder is reinstated (a) provisionally, unless and until the copyright holder explicitly and finally terminates your license, and (b) permanently, if the copyright holder fails to notify you of the violation by some reasonable means prior to 60 days after the cessation.

Moreover, your license from a particular copyright holder is reinstated permanently if the copyright holder notifies you of the violation by some reasonable means, this is the first time you have received notice of violation of this License (for any work) from that copyright holder, and you cure the violation prior to 30 days after your receipt of the notice.

Termination of your rights under this section does not terminate the licenses of parties who have received copies or rights from you under this License. If your rights have been terminated and not permanently reinstated, you do not qualify to receive new licenses for the same material under section 10.

#### 9. Acceptance Not Required for Having Copies.

You are not required to accept this License in order to receive or run a copy of the Program. Ancillary propagation of a covered work occurring solely as a consequence of using peer-to-peer transmission to receive a copy likewise does not require acceptance. However, nothing other than this License grants you permission to propagate or modify any covered work. These actions infringe copyright if you do not accept this License. Therefore, by modifying or propagating a covered work, you indicate your acceptance of this License to do so.

#### 10. Automatic Licensing of Downstream Recipients.

Each time you convey a covered work, the recipient automatically receives a license from the original licensors, to run, modify and propagate that work, subject to this License. You are not responsible for enforcing compliance by third parties with this License.

An "entity transaction" is a transaction transferring control of an organization, or substantially all assets of one, or subdividing an organization, or merging organizations. If propagation of a covered work results from an entity transaction, each party to that transaction who receives a copy of the work also receives whatever licenses to the work the party's predecessor in interest had or could give under the previous paragraph, plus a right to possession of the Corresponding Source of the work from the predecessor in interest, if the predecessor has it or can get it with reasonable efforts.

You may not impose any further restrictions on the exercise of the rights granted or affirmed under this License. For example, you may not impose a license fee, royalty, or other charge for exercise of rights granted under this License, and you may not initiate litigation (including a cross-claim or counterclaim in a lawsuit) alleging that any patent claim is infringed by making, using, selling, offering for sale, or importing the Program or any portion of it.

#### 11. Patents.

A "contributor" is a copyright holder who authorizes use under this License of the Program or a work on which the Program is based. The work thus licensed is called the contributor's "contributor version".

A contributor's "essential patent claims" are all patent claims owned or controlled by the contributor, whether already acquired or hereafter acquired, that would be infringed by some manner, permitted by this License, of making, using, or selling its contributor version, but do not include claims that would be infringed only as a consequence of further modification of the contributor version. For purposes of this definition, "control" includes the right to grant patent sublicenses in a manner consistent with the requirements of this License.

Each contributor grants you a non-exclusive, worldwide, royalty-free patent license under the contributor's essential patent claims, to make, use, sell, offer for sale, import and otherwise run, modify and propagate the contents of its contributor version.

In the following three paragraphs, a "patent license" is any express agreement or commitment, however denominated, not to enforce a patent (such as an express permission to practice a patent or covenant not to sue for patent infringement). To "grant" such a patent license to a party means to make such an agreement or commitment not to enforce a patent against the party.

If you convey a covered work, knowingly relying on a patent license, and the Corresponding Source of the work is not available for anyone to copy, free of charge and under the terms of this License, through a publicly available network server or other readily accessible means, then you must either (1) cause the Corresponding Source to be so available, or (2) arrange to deprive yourself of the benefit of the patent license for this particular work, or (3) arrange, in a manner consistent with the requirements of this License, to extend the patent license to downstream recipients. "Knowingly relying" means you have actual knowledge that, but for the patent license, your conveying the covered work in a country, or your recipient's use of the covered work in a country, would infringe one or more identifiable patents in that country that you have reason to believe are valid.

If, pursuant to or in connection with a single transaction or arrangement, you convey, or propagate by procuring conveyance of, a covered work, and grant a patent license to some of the parties receiving the covered work authorizing them to use, propagate, modify or convey a specific copy of the covered work, then the patent license you grant is automatically extended to all recipients of the covered work and works based on it.

A patent license is "discriminatory" if it does not include within the scope of its coverage, prohibits the exercise of, or is conditioned on the non-exercise of one or more of the rights that are specifically granted under this License. You may not convey a covered work if you are a party to an arrangement with a third party that is in the business of distributing software, under which you make payment to the third party based on the extent of your activity of conveying the work, and under which the third party grants, to any of the parties who would receive the covered work from you, a discriminatory patent license (a) in connection with copies of the covered work conveyed by you (or copies made from those copies), or (b) primarily for and in connection with specific products or compilations that contain the covered work, unless you entered into that arrangement, or that patent license was granted, prior to 28 March 2007.

Nothing in this License shall be construed as excluding or limiting any implied license or other defenses to infringement that may otherwise be available to you under applicable patent law.

#### 12. No Surrender of Others' Freedom.

If conditions are imposed on you (whether by court order, agreement or otherwise) that contradict the conditions of this License, they do not excuse you from the conditions of this License. If you cannot convey a covered work so as to satisfy simultaneously your obligations under this License and any other pertinent obligations, then as a consequence you may not convey it at all. For example, if you agree to terms that obligate you to collect a royalty for further conveying from those to whom you convey the Program, the only way you could satisfy both those terms and this License would be to refrain entirely from conveying the Program.

#### 13. Use with the GNU Affero General Public License.

Notwithstanding any other provision of this License, you have permission to link or combine any covered work with a work licensed under version 3 of the GNU Affero General Public License into a single combined work, and to convey the resulting work. The terms of this License will continue to apply to the part which is the covered work, but the special requirements of the GNU Affero General Public License, section 13, concerning interaction through a network will apply to the combination as such.

## 14. Revised Versions of this License.

The Free Software Foundation may publish revised and/or new versions of the GNU General Public License from time to time. Such new versions will be similar in spirit to the present version, but may differ in detail to address new problems or concerns.

Each version is given a distinguishing version number. If the Program specifies that a certain numbered version of the GNU General Public License "or any later version" applies to it, you have the option of following the terms and conditions either of that numbered version or of any later version published by the Free Software Foundation. If the Program does not specify a version number of the GNU General Public License, you may choose any version ever published by the Free Software Foundation.

If the Program specifies that a proxy can decide which future versions of the GNU General Public License can be used, that proxy's public statement of acceptance of a version permanently authorizes you to choose that version for the Program.

Later license versions may give you additional or different permissions. However, no additional obligations are imposed on any author or copyright holder as a result of your choosing to follow a later version.

## 15. Disclaimer of Warranty.

THERE IS NO WARRANTY FOR THE PROGRAM, TO THE EXTENT PERMITTED BY APPLICABLE LAW. EXCEPT WHEN OTHERWISE STATED IN WRITING THE COPYRIGHT HOLDERS AND/OR OTHER PARTIES PROVIDE THE PROGRAM "AS IS" WITHOUT WARRANTY OF ANY KIND, EITHER EXPRESSED OR IMPLIED, INCLUDING, BUT NOT LIMITED TO, THE IMPLIED WARRANTIES OF MERCHANTABILITY AND FITNESS FOR A PARTICULAR PURPOSE. THE ENTIRE RISK AS TO THE QUALITY AND PERFORMANCE OF THE PROGRAM IS WITH YOU. SHOULD THE PROGRAM PROVE DEFECTIVE, YOU ASSUME THE COST OF ALL NECESSARY SERVICING, REPAIR OR CORRECTION.

## 16. Limitation of Liability.

IN NO EVENT UNLESS REQUIRED BY APPLICABLE LAW OR AGREED TO IN WRITING WILL ANY COPYRIGHT HOLDER, OR ANY OTHER PARTY WHO MODIFIES AND/OR CONVEYS THE PROGRAM AS PERMITTED ABOVE, BE LIABLE TO YOU FOR DAMAGES, INCLUDING ANY GENERAL, SPECIAL, INCIDENTAL OR CONSEQUENTIAL DAMAGES ARISING OUT OF THE USE OR INABILITY TO USE THE PROGRAM (INCLUDING BUT NOT LIMITED TO LOSS OF DATA OR DATA BEING RENDERED INACCURATE OR LOSSES SUSTAINED BY YOU OR THIRD PARTIES OR A FAILURE OF THE PROGRAM TO OPERATE WITH ANY OTHER PROGRAMS), EVEN IF SUCH HOLDER OR OTHER PARTY HAS BEEN ADVISED OF THE POSSIBILITY OF SUCH DAMAGES.

## 17. Interpretation of Sections 15 and 16.

If the disclaimer of warranty and limitation of liability provided above cannot be given local legal effect according to their terms, reviewing courts shall apply local law that most closely approximates an absolute waiver of all civil liability in connection with the Program, unless a warranty or assumption of liability accompanies a copy of the Program in return for a fee.

END OF TERMS AND CONDITIONS

## How to Apply These Terms to Your New Programs

If you develop a new program, and you want it to be of the greatest possible use to the public, the best way to achieve this is to make it free software which everyone can redistribute and change under these terms.

To do so, attach the following notices to the program. It is safest to attach them to the start of each source file to most effectively state the exclusion of warranty; and each file should have at least

the "copyright" line and a pointer to where the full notice is found.

```
<one line to give the program's name and a brief idea of what it does.>
Copyright (C) <year> <name of author>
```

This program is free software: you can redistribute it and/or modify it under the terms of the GNU General Public License as published by the Free Software Foundation, either version 3 of the License, or (at your option) any later version.

This program is distributed in the hope that it will be useful, but WITHOUT ANY WARRANTY; without even the implied warranty of MERCHANTABILITY or FITNESS FOR A PARTICULAR PURPOSE. See the GNU General Public License for more details.

You should have received a copy of the GNU General Public License along with this program. If not, see <https://www.gnu.org/licenses/>.

Also add information on how to contact you by electronic and paper mail.

If the program does terminal interaction, make it output a short notice like this when it starts in an interactive mode:

```
<program> Copyright (C) <year> <name of author>
This program comes with ABSOLUTELY NO WARRANTY; for details type `show w'.
This is free software, and you are welcome to redistribute it
under certain conditions; type `show c' for details.
```

The hypothetical commands `show w' and `show c' should show the appropriate parts of the General Public License. Of course, your program's commands might be different; for a GUI interface, you would use an "about box".

You should also get your employer (if you work as a programmer) or school, if any, to sign a "copyright disclaimer" for the program, if necessary. For more information on this, and how to apply and follow the GNU GPL, see <https://www.gnu.org/licenses/>.

The GNU General Public License does not permit incorporating your program into proprietary programs. If your program is a subroutine library, you may consider it more useful to permit linking proprietary applications with the library. If this is what you want to do, use the GNU Lesser General Public License instead of this License. But first, please read <https://www.gnu.org/licenses/why-not-lgpl.html>.

## GCC Runtime Library Exception

Version 3.1, 31 March 2009

Copyright (C) 2009 Free Software Foundation, Inc. <http://fsf.org/>

Everyone is permitted to copy and distribute verbatim copies of this license document, but changing it is not allowed.

This GCC Runtime Library Exception ("Exception") is an additional permission under section 7 of the GNU General Public License, version 3 ("GPLv3"). It applies to a given file (the "Runtime Library") that bears a notice placed by the copyright holder of the file stating that the file is governed by GPLv3 along with this Exception.

When you use GCC to compile a program, GCC may combine portions of certain GCC header files and runtime libraries with the compiled program. The purpose of this Exception is to allow compilation of non-GPL (including proprietary) programs to use, in this way, the header files and runtime libraries covered by this Exception.

### 0. Definitions.

A file is an "Independent Module" if it either requires the Runtime Library for execution after a Compilation Process, or makes use of an

interface provided by the Runtime Library, but is not otherwise based on the Runtime Library.

"GCC" means a version of the GNU Compiler Collection, with or without modifications, governed by version 3 (or a specified later version) of the GNU General Public License (GPL) with the option of using any subsequent versions published by the FSF.

"GPL-compatible Software" is software whose conditions of propagation, modification and use would permit combination with GCC in accord with the license of GCC.

"Target Code" refers to output from any compiler for a real or virtual target processor architecture, in executable form or suitable for input to an assembler, loader, linker and/or execution phase. Notwithstanding that, Target Code does not include data in any format that is used as a compiler intermediate representation, or used for producing a compiler intermediate representation.

The "Compilation Process" transforms code entirely represented in non-intermediate languages designed for human-written code, and/or in Java Virtual Machine byte code, into Target Code. Thus, for example, use of source code generators and preprocessors need not be considered part of the Compilation Process, since the Compilation Process can be understood as starting with the output of the generators or preprocessors.

A Compilation Process is "Eligible" if it is done using GCC, alone or with other GPL-compatible software, or if it is done without using any work based on GCC. For example, using non-GPL-compatible Software to optimize any GCC intermediate representations would not qualify as an Eligible Compilation Process.

#### 1. Grant of Additional Permission.

You have permission to propagate a work of Target Code formed by combining the Runtime Library with Independent Modules, even if such propagation would otherwise violate the terms of GPLv3, provided that all Target Code was generated by Eligible Compilation Processes. You may then convey such a combination under terms of your choice, consistent with the licensing of the Independent Modules.

#### 2. No Weakening of GCC Copyleft.

The availability of this Exception does not imply any general presumption that third-party software is unaffected by the copyleft requirements of the license of GCC.

## Apache 2.0

Apache License  
Version 2.0, January 2004  
<http://www.apache.org/licenses/>

### TERMS AND CONDITIONS FOR USE, REPRODUCTION, AND DISTRIBUTION

#### 1. Definitions.

"License" shall mean the terms and conditions for use, reproduction, and distribution as defined by Sections 1 through 9 of this document.

"Licensor" shall mean the copyright owner or entity authorized by the copyright owner that is granting the License.

"Legal Entity" shall mean the union of the acting entity and all other entities that control, are controlled by, or are under common control with that entity. For the purposes of this definition, "control" means (i) the power, direct or indirect, to cause the direction or management of such entity, whether by contract or

otherwise, or (ii) ownership of fifty percent (50%) or more of the outstanding shares, or (iii) beneficial ownership of such entity.

"You" (or "Your") shall mean an individual or Legal Entity exercising permissions granted by this License.

"Source" form shall mean the preferred form for making modifications, including but not limited to software source code, documentation source, and configuration files.

"Object" form shall mean any form resulting from mechanical transformation or translation of a Source form, including but not limited to compiled object code, generated documentation, and conversions to other media types.

"Work" shall mean the work of authorship, whether in Source or Object form, made available under the License, as indicated by a copyright notice that is included in or attached to the work (an example is provided in the Appendix below).

"Derivative Works" shall mean any work, whether in Source or Object form, that is based on (or derived from) the Work and for which the editorial revisions, annotations, elaborations, or other modifications represent, as a whole, an original work of authorship. For the purposes of this License, Derivative Works shall not include works that remain separable from, or merely link (or bind by name) to the interfaces of, the Work and Derivative Works thereof.

"Contribution" shall mean any work of authorship, including the original version of the Work and any modifications or additions to that Work or Derivative Works thereof, that is intentionally submitted to Licensor for inclusion in the Work by the copyright owner or by an individual or Legal Entity authorized to submit on behalf of the copyright owner. For the purposes of this definition, "submitted" means any form of electronic, verbal, or written communication sent to the Licensor or its representatives, including but not limited to communication on electronic mailing lists, source code control systems, and issue tracking systems that are managed by, or on behalf of, the Licensor for the purpose of discussing and improving the Work, but excluding communication that is conspicuously marked or otherwise designated in writing by the copyright owner as "Not a Contribution."

"Contributor" shall mean Licensor and any individual or Legal Entity on behalf of whom a Contribution has been received by Licensor and subsequently incorporated within the Work.

2. Grant of Copyright License. Subject to the terms and conditions of this License, each Contributor hereby grants to You a perpetual, worldwide, non-exclusive, no-charge, royalty-free, irrevocable copyright license to reproduce, prepare Derivative Works of, publicly display, publicly perform, sublicense, and distribute the Work and such Derivative Works in Source or Object form.
3. Grant of Patent License. Subject to the terms and conditions of this License, each Contributor hereby grants to You a perpetual, worldwide, non-exclusive, no-charge, royalty-free, irrevocable (except as stated in this section) patent license to make, have made, use, offer to sell, sell, import, and otherwise transfer the Work, where such license applies only to those patent claims licensable by such Contributor that are necessarily infringed by their Contribution(s) alone or by combination of their Contribution(s) with the Work to which such Contribution(s) was submitted. If You institute patent litigation against any entity (including a cross-claim or counterclaim in a lawsuit) alleging that the Work or a Contribution incorporated within the Work constitutes direct or contributory patent infringement, then any patent licenses granted to You under this License for that Work shall terminate as of the date such litigation is filed.
4. Redistribution. You may reproduce and distribute copies of the

Work or Derivative Works thereof in any medium, with or without modifications, and in Source or Object form, provided that You meet the following conditions:

- (a) You must give any other recipients of the Work or Derivative Works a copy of this License; and
- (b) You must cause any modified files to carry prominent notices stating that You changed the files; and
- (c) You must retain, in the Source form of any Derivative Works that You distribute, all copyright, patent, trademark, and attribution notices from the Source form of the Work, excluding those notices that do not pertain to any part of the Derivative Works; and
- (d) If the Work includes a "NOTICE" text file as part of its distribution, then any Derivative Works that You distribute must include a readable copy of the attribution notices contained within such NOTICE file, excluding those notices that do not pertain to any part of the Derivative Works, in at least one of the following places: within a NOTICE text file distributed as part of the Derivative Works; within the Source form or documentation, if provided along with the Derivative Works; or, within a display generated by the Derivative Works, if and wherever such third-party notices normally appear. The contents of the NOTICE file are for informational purposes only and do not modify the License. You may add Your own attribution notices within Derivative Works that You distribute, alongside or as an addendum to the NOTICE text from the Work, provided that such additional attribution notices cannot be construed as modifying the License.

You may add Your own copyright statement to Your modifications and may provide additional or different license terms and conditions for use, reproduction, or distribution of Your modifications, or for any such Derivative Works as a whole, provided Your use, reproduction, and distribution of the Work otherwise complies with the conditions stated in this License.

5. **Submission of Contributions.** Unless You explicitly state otherwise, any Contribution intentionally submitted for inclusion in the Work by You to the Licensor shall be under the terms and conditions of this License, without any additional terms or conditions. Notwithstanding the above, nothing herein shall supersede or modify the terms of any separate license agreement you may have executed with Licensor regarding such Contributions.
6. **Trademarks.** This License does not grant permission to use the trade names, trademarks, service marks, or product names of the Licensor, except as required for reasonable and customary use in describing the origin of the Work and reproducing the content of the NOTICE file.
7. **Disclaimer of Warranty.** Unless required by applicable law or agreed to in writing, Licensor provides the Work (and each Contributor provides its Contributions) on an "AS IS" BASIS, WITHOUT WARRANTIES OR CONDITIONS OF ANY KIND, either express or implied, including, without limitation, any warranties or conditions of TITLE, NON-INFRINGEMENT, MERCHANTABILITY, or FITNESS FOR A PARTICULAR PURPOSE. You are solely responsible for determining the appropriateness of using or redistributing the Work and assume any risks associated with Your exercise of permissions under this License.
8. **Limitation of Liability.** In no event and under no legal theory, whether in tort (including negligence), contract, or otherwise, unless required by applicable law (such as deliberate and grossly negligent acts) or agreed to in writing, shall any Contributor be liable to You for damages, including any direct, indirect, special, incidental, or consequential damages of any character arising as a result of this License or out of the use or inability to use the



Work (including but not limited to damages for loss of goodwill, work stoppage, computer failure or malfunction, or any and all other commercial damages or losses), even if such Contributor has been advised of the possibility of such damages.

9. Accepting Warranty or Additional Liability. While redistributing the Work or Derivative Works thereof, You may choose to offer, and charge a fee for, acceptance of support, warranty, indemnity, or other liability obligations and/or rights consistent with this License. However, in accepting such obligations, You may act only on Your own behalf and on Your sole responsibility, not on behalf of any other Contributor, and only if You agree to indemnify, defend, and hold each Contributor harmless for any liability incurred by, or claims asserted against, such Contributor by reason of your accepting any such warranty or additional liability.

END OF TERMS AND CONDITIONS

APPENDIX: How to apply the Apache License to your work.

To apply the Apache License to your work, attach the following boilerplate notice, with the fields enclosed by brackets "[ ]" replaced with your own identifying information. (Don't include the brackets!) The text should be enclosed in the appropriate comment syntax for the file format. We also recommend that a file or class name and description of purpose be included on the same "printed page" as the copyright notice for easier identification within third-party archives.

Copyright [yyyy] [name of copyright owner]

Licensed under the Apache License, Version 2.0 (the "License");  
you may not use this file except in compliance with the License.  
You may obtain a copy of the License at

<http://www.apache.org/licenses/LICENSE-2.0>

Unless required by applicable law or agreed to in writing, software distributed under the License is distributed on an "AS IS" BASIS, WITHOUT WARRANTIES OR CONDITIONS OF ANY KIND, either express or implied. See the License for the specific language governing permissions and limitations under the License.

## BSL 1.0

Boost Software License - Version 1.0 - August 17th, 2003

Permission is hereby granted, free of charge, to any person or organization obtaining a copy of the software and accompanying documentation covered by this license (the "Software") to use, reproduce, display, distribute, execute, and transmit the Software, and to prepare derivative works of the Software, and to permit third-parties to whom the Software is furnished to do so, all subject to the following:

The copyright notices in the Software and this entire statement, including the above license grant, this restriction and the following disclaimer, must be included in all copies of the Software, in whole or in part, and all derivative works of the Software, unless such copies or derivative works are solely in the form of machine-executable object code generated by a source language processor.

THE SOFTWARE IS PROVIDED "AS IS", WITHOUT WARRANTY OF ANY KIND, EXPRESS OR IMPLIED, INCLUDING BUT NOT LIMITED TO THE WARRANTIES OF MERCHANTABILITY, FITNESS FOR A PARTICULAR PURPOSE, TITLE AND NON-INFRINGEMENT. IN NO EVENT SHALL THE COPYRIGHT HOLDERS OR ANYONE DISTRIBUTING THE SOFTWARE BE LIABLE FOR ANY DAMAGES OR OTHER LIABILITY, WHETHER IN CONTRACT, TORT OR OTHERWISE, ARISING FROM, OUT OF OR IN CONNECTION WITH THE SOFTWARE OR THE USE OR OTHER DEALINGS IN THE SOFTWARE.

**BSD 2.0**

Redistribution and use in source and binary forms, with or without modification, are permitted provided that the following conditions are met:

- \* Redistributions of source code must retain the above copyright notice, this list of conditions and the following disclaimer.
- \* Redistributions in binary form must reproduce the above copyright notice, this list of conditions and the following disclaimer in the documentation and/or other materials provided with the distribution.
- \* Neither the name of the <organization> nor the names of its contributors may be used to endorse or promote products derived from this software without specific prior written permission.

THIS SOFTWARE IS PROVIDED BY THE COPYRIGHT HOLDERS AND CONTRIBUTORS "AS IS" AND ANY EXPRESS OR IMPLIED WARRANTIES, INCLUDING, BUT NOT LIMITED TO, THE IMPLIED WARRANTIES OF MERCHANTABILITY AND FITNESS FOR A PARTICULAR PURPOSE ARE DISCLAIMED. IN NO EVENT SHALL <COPYRIGHT HOLDER> BE LIABLE FOR ANY DIRECT, INDIRECT, INCIDENTAL, SPECIAL, EXEMPLARY, OR CONSEQUENTIAL DAMAGES (INCLUDING, BUT NOT LIMITED TO, PROCUREMENT OF SUBSTITUTE GOODS OR SERVICES; LOSS OF USE, DATA, OR PROFITS; OR BUSINESS INTERRUPTION) HOWEVER CAUSED AND ON ANY THEORY OF LIABILITY, WHETHER IN CONTRACT, STRICT LIABILITY, OR TORT (INCLUDING NEGLIGENCE OR OTHERWISE) ARISING IN ANY WAY OUT OF THE USE OF THIS SOFTWARE, EVEN IF ADVISED OF THE POSSIBILITY OF SUCH DAMAGE.

**MIT**

Permission is hereby granted, free of charge, to any person obtaining a copy of this software and associated documentation files (the "Software"), to deal in the Software without restriction, including without limitation the rights to use, copy, modify, merge, publish, distribute, sublicense, and/or sell copies of the Software, and to permit persons to whom the Software is furnished to do so, subject to the following conditions:

The above copyright notice and this permission notice shall be included in all copies or substantial portions of the Software.

THE SOFTWARE IS PROVIDED "AS IS", WITHOUT WARRANTY OF ANY KIND, EXPRESS OR IMPLIED, INCLUDING BUT NOT LIMITED TO THE WARRANTIES OF MERCHANTABILITY, FITNESS FOR A PARTICULAR PURPOSE AND NONINFRINGEMENT. IN NO EVENT SHALL THE AUTHORS OR COPYRIGHT HOLDERS BE LIABLE FOR ANY CLAIM, DAMAGES OR OTHER LIABILITY, WHETHER IN AN ACTION OF CONTRACT, TORT OR OTHERWISE, ARISING FROM, OUT OF OR IN CONNECTION WITH THE SOFTWARE OR THE USE OR OTHER DEALINGS IN THE SOFTWARE.